



Auxiliary Electric Heater Interface kit ASKHTR

Installation, Operation & Maintenance

97B0012N07
Revised: January 30, 2017

Table of Contents

General Information	2
INSTRUCTIONS for 1: Boilerless	2
INSTRUCTIONS for 2: Supplemental	3
Typical Wiring Diagram	4
Typical Wiring Diagram	5
Revision History	8

CLIMATEMASTER WATER-SOURCE HEAT PUMPS

Aux Electric Heater Interface Kit

Rev: January 30, 2017

General Information

Safety

Warnings, cautions, and notices appear throughout this manual. Read these items carefully before attempting any installation, service, or troubleshooting of the equipment. All work to be performed by qualified service contractor.

DANGER: Indicates an immediate hazardous situation, which if not avoided will result in death or serious injury. DANGER labels on unit access panels must be observed.

WARNING: Indicates a potentially hazardous situation, which if not avoided could result in death or serious injury.

CAUTION: Indicates a potentially hazardous situation or an unsafe practice, which if not avoided could result in minor or moderate injury or product or property damage.

NOTICE: Notification of installation, operation, or maintenance information, which is important, but which is not hazard-related.

⚠ WARNING! ⚠

WARNING! The installation of water-source heat pumps and all associated components, parts, and accessories which make up the installation shall be in accordance with the regulations of ALL authorities having jurisdiction and MUST conform to all applicable codes. It is the responsibility of the installing contractor to determine and comply with ALL applicable codes and regulations.

⚠ WARNING! ⚠

WARNING! To avoid possible injury or death due to electrical shock, open the power supply disconnect switch and secure it in an open position during installation.

⚠ CAUTION! ⚠

CAUTION! Use only copper conductors for field installed electrical wiring. Unit terminals are not designed to accept other types of conductors.

DESCRIPTION: Kit contains 24 VDC relay, wires and harness.

APPLICATION: This kit can be used for two applications:

1) **For automatic changeover from heat pump heat to electric heat for boilerless applications.** Also required AH Accessory Heater and unit must have DXM. Controller can be heat pump thermostat, MPC, or LON. Controller Y is connected to DXM Y, DXM-LT1 sensor in unit determines if unit will operate as compressor heat or electric heat.

2) **For supplemental electric heat when using MPC.**

Also required AH Accessory Heater and unit must have MPC and either CXM or DXM. W signal from MPC is connected to W on CXM/DXM.

INSTRUCTIONS for 1: boilerless - use wire diagram 96B0006N39

Connect the harness to DXM-P6 (lower right corner). Note- For MPC controller- the heater relay uses the same DXM output (EH) as pulsing fault code. This feature will not be available and pulsing fault code can only be viewed at the DXM.

Locate the relay within the reach of the harness wires, mark and drill two 7/64" (2.8 mm) diameter holes. Securely attach relay with two #6 screws.

Connect one black and the white harness wire to each side of relay coil. Securely tape off the 2 unused harness wire terminals (red and 1 black) to prevent electrical short.

Connect supplied red wire from relay - COM and to any R connection on DXM.

Connect supplied white wire from relay - N.O. to AH heater - W1

Connect supplied brown wire from DXM-C to AH heater-C

Connect supplied yellow wire from DXM-R to AH heater - R

Remove DXM - G wire (disconnect on both ends).

Connect supplied Black wire from AH heater GT to controller G output. Connect supplied gray wire from DXM-G to AH heater GU

Configuring the DXM; Set dip switch S1.7 to enable (off). Set S1.8 to desired changeover 40F (off) or 50F (on). Set S1.6 and configure JW4 for your controller (see table 1).

Blue wire is not used.

Table 1

Controller	DXM		
	Dip Switch		Clip Jumper
	S1.6	S1.7	JW4
Thermostat	On	Off	No
MPC	Off	Off	Yes
LON	Off	Off	Yes

General Information

INSTRUCTIONS for 2: supplemental electric heat when using MPC. Use wire diagram 96B0006N82

Connect the harness to CXM/DXM-P6 (lower right corner). Note- For MPC controller- the heater relay uses the same CXM/DXM output (EH) as pulsing fault code. This feature will not be available and pulsing fault code can only be viewed at the CXM/DXM.

Locate the relay within the reach of the harness wires, mark and drill two 7/64" (2.8 mm) diameter holes. Securely attach relay with two #6 screws.

Connect one black and the white harness wire to each side of relay coil. Securely tape off the 2 unused harness wire terminals (red and 1 black) to prevent electrical short.

Connect supplied blue wire from MPC-W to CXM/DXM-W.

Connect supplied red wire from relay- COM and to any R connection on CXM/DXM.

Connect supplied white wire from relay- N.O. to AH heater -W1.

Connect supplied brown wire from CXM/DXM-C to AH heater- C.

Connect supplied yellow wire from CXM/DXM-R to AH heater- R

Remove CXM/DXM G wire (disconnect on both ends). Connect supplied Black wire from AH heater GT to controller G output. Connect supplied gray wire from CXM/DXM-G to AH heater GU.

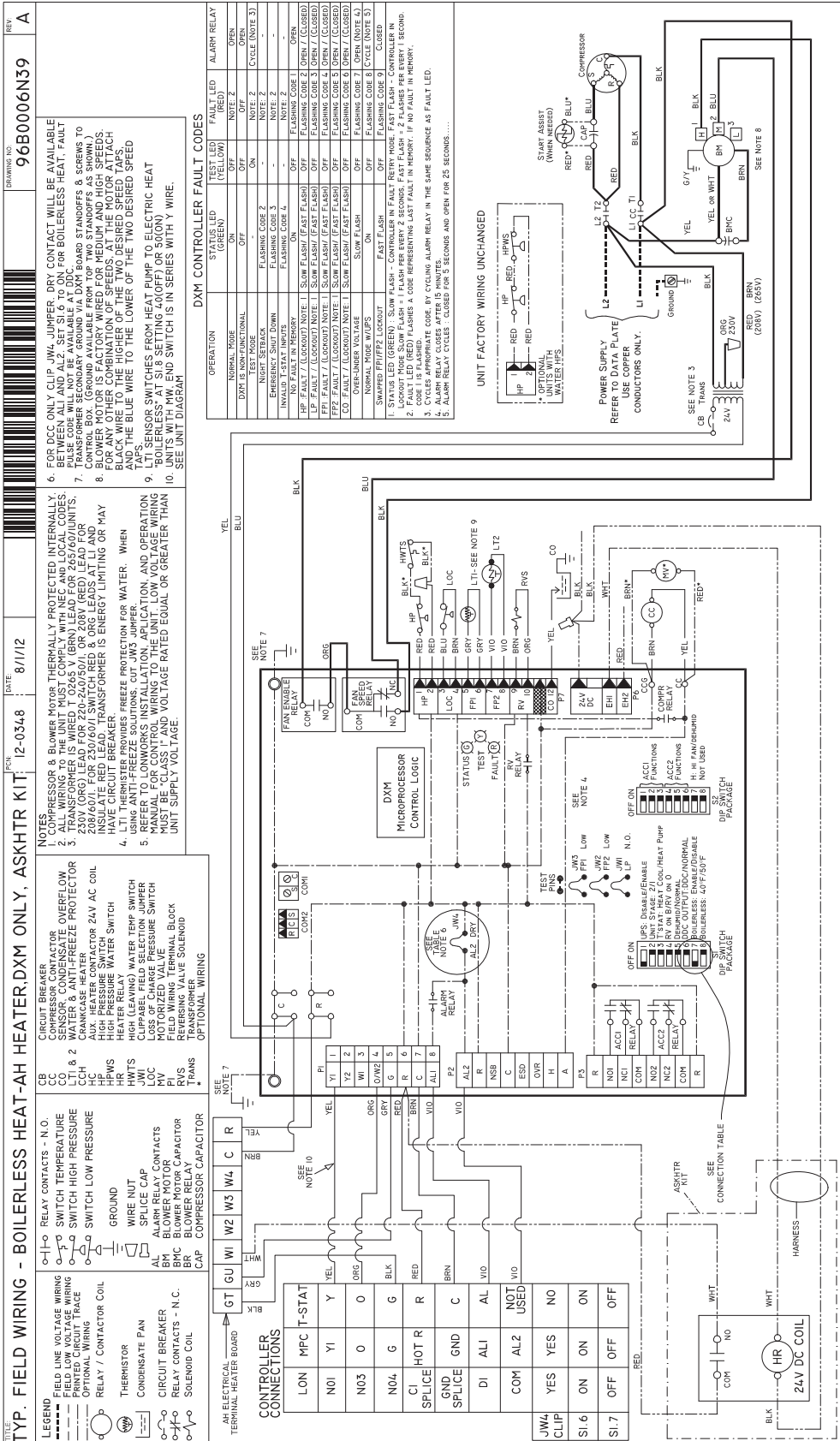
For DXM- Set dip switch S1.6 to normal (on) and JW4 must be clipped. For CXM- Set dip switch 4 to normal (on) and JW1 must be clipped.

CLIMATEMASTER WATER-SOURCE HEAT PUMPS

Aux Electric Heater Interface Kit

Rev: January 30, 2017

Typical Wiring Diagram



UNIT FACTORY WIRING UNCHANGED

POWER SUPPLY REFER TO DATA PLATE USE COPPER CONDUCTORS ONLY.

SEE NOTE 3

24V TRANSFORMER

24V 250V (OR 24V) (COPR)

SEE NOTE 6

CONNECTION TABLE

CONNECTION	WIRING	FUNCTION
JW4 CLIP	YEL	CONDENSATE FAN
SI.6	ON	ON
SI.7	OFF	OFF

Aux Electric Heater Interface Kit

Rev: January 30, 2017

Notes:

Notes:

CLIMATEMASTER WATER-SOURCE HEAT PUMPS

Aux Electric Heater Interface Kit

Rev: January 30, 2017

Revision History

Date:	Item:	Action:
01/30/17	Page 5	Relaced wiring diagram
07/14/16	Logo	Updated
04/15/16	Revised	
08/22/12	First Published	



97B0012N07



ClimateMaster works continually to improve its products. As a result, the design and specifications of each product at the time for order may be changed without notice and may not be as described herein. Please contact ClimateMaster's Customer Service Department at 1-405-745-6000 for specific information on the current design and specifications. Statements and other information contained herein are not express warranties and do not form the basis of any bargain between the parties, but are merely ClimateMaster's opinion or commendation of its products.

© ClimateMaster, Inc. 2012