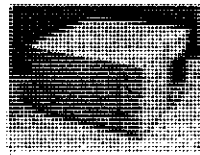


# 804 SERIES HORIZONTAL WATER SOURCE HEAT PUMP SIZE: 009



**ClimateMaster**  
A COMBINATION OF CHP CORP. AND  
FRIEDRICH™ CLIMATE MASTER, INC.

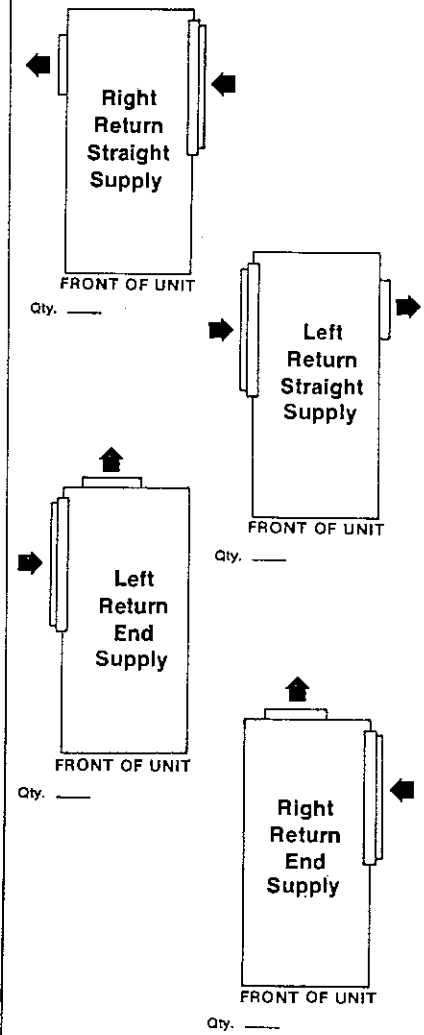
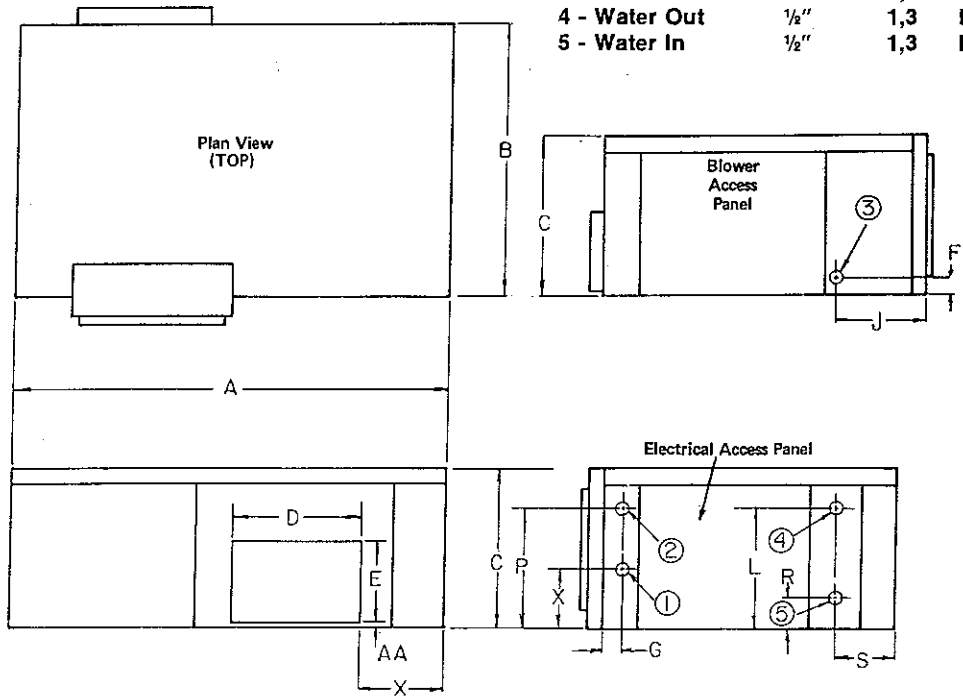
**TAG:** \_\_\_\_\_

JOB SCHEDULE	TOTAL BTUH	INPUT WATTS	SENSIBLE BTUH	BTUH HEAT OF ABS./REJ.	EER COP	GPM	EWT	LWT	EAT	PRESSURE DROP IN FEET
COOLING										
HEATING										
ELECTRICAL DATA		BLOWER		COMPRESSOR		MIN CKT AMPACITY		MAX, FUSE OR HACR SIZE		
VOLTAGE	PHASE	FLA	RLA	LRA						
208/230	1	.50	3.3	20.0	4.6		15			
265	1	.50	2.8	16.0	4.0		15			
BLOWER PERFORMANCE				INSTALLED WEIGHT						
EXT. STATIC PRES. I.W.G.				lbs.						
CFM				kg.						

**DIMENSIONS**

**AIR FLOW PATTERNS**

- 1 - High Voltage  $\frac{7}{8}$ "-1 $\frac{1}{8}$ " IN. 2,2-2,9 CM. Dia.
- 2 - Low Voltage  $\frac{1}{2}$ " IN. 1,3 CM. Dia.
- 3 - Cond. Drain  $\frac{3}{4}$ " IN. 1,9 CM. FPT
- 4 - Water Out  $\frac{1}{2}$ " IN. 1,3 CM. FPT
- 5 - Water In  $\frac{1}{2}$ " IN. 1,3 CM. FPT



SZ.	A	B	C	D	E	F	G	J	L	P	R	S	X	Y	AA
IN.	31	20	11 $\frac{1}{2}$	9	6	1 $\frac{1}{2}$	1	5 $\frac{1}{2}$	8 $\frac{1}{2}$	8 $\frac{1}{2}$	2	3 $\frac{1}{2}$	4 $\frac{1}{2}$	3 $\frac{3}{16}$	$\frac{1}{2}$
CM.	79	51	28	23	15	3	2,5	13	23	22	5	9	12	9	1

FILTER SIZE 10"x16"x1" SHIPPING WGT. 108 lbs.  
25x41x2,5 cm. 49 kg.

# 804 SERIES HORIZONTAL WATER SOURCE HEAT PUMP SIZE: 012



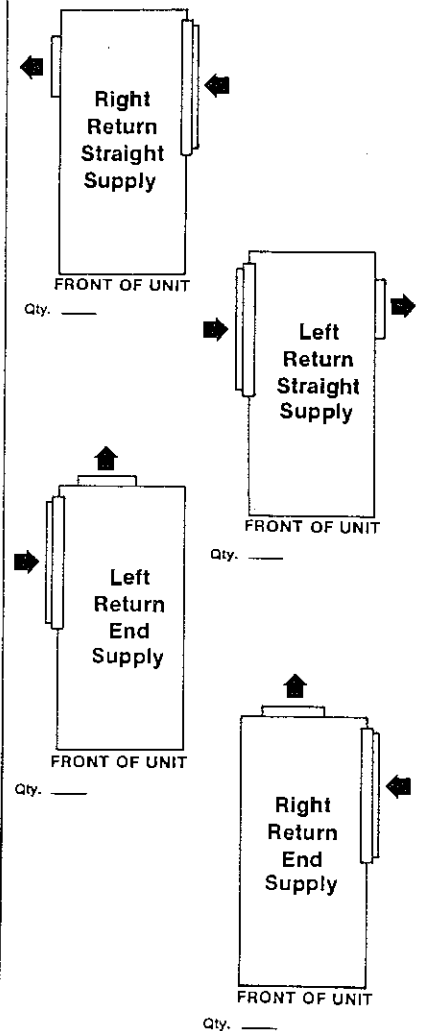
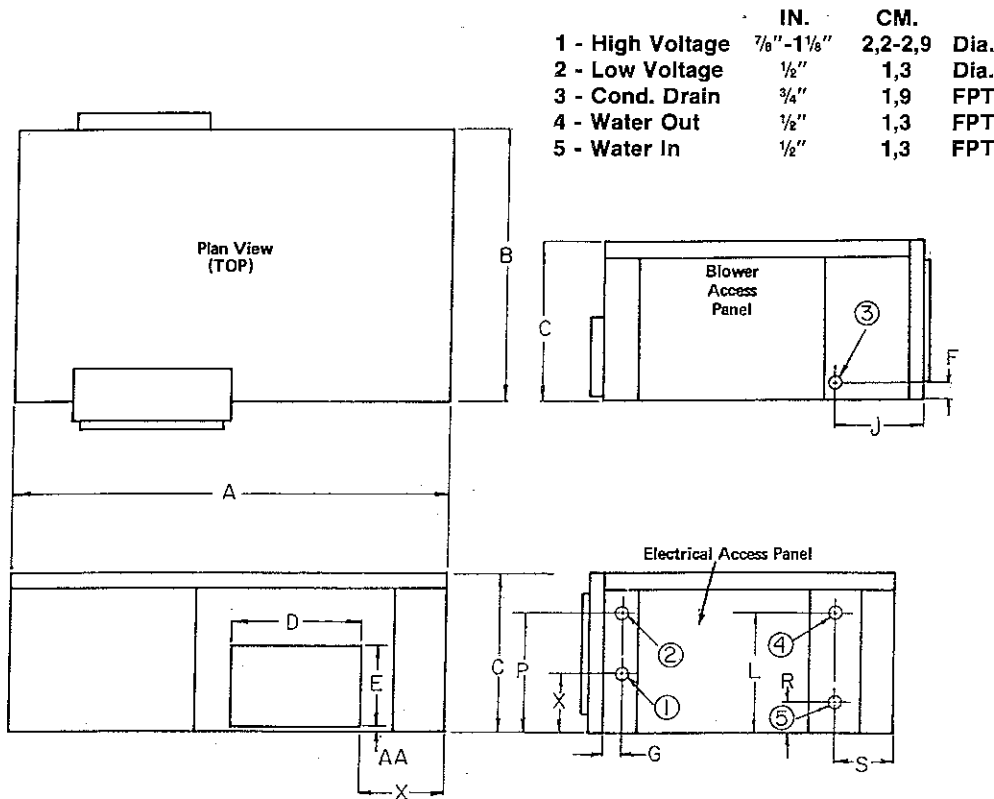
**ClimateMaster**  
A COMBINATION OF CHILLED WATER  
AND DIRECT EXPANSION CLIMATE MASTER, INC.

TAG: \_\_\_\_\_

JOB SCHEDULE	TOTAL BTUH	INPUT WATTS	SENSIBLE BTUH	BTUH HEAT OF ABS./REJ.	EER COP	GPM	EWT	LWT	EAT	PRESSURE DROP IN FEET
COOLING										
HEATING										
ELECTRICAL DATA		BLOWER		COMPRESSOR		MIN CKT AMPACITY		MAX. FUSE OR HACR SIZE		
VOLTAGE	PHASE	FLA	RLA	LRA						
208/230	1	.80	6.3	31.0	8.7		15			
265	1	.81	4.9	27.0	6.9		15			
BLOWER PERFORMANCE						INSTALLED WEIGHT				
EXT. STATIC PRES. I.W.G.						lbs.				
CFM						kg.				

### DIMENSIONS

### AIR FLOW PATTERNS



SZ	A	B	C	D	E	F	G	J	L	P	R	S	X	Y	AA
IN.	31	20	11 1/2	9	6	1 1/4	1	5 1/4	8 3/4	8 1/2	2	3 1/2	4 1/4	3 3/16	1/2
CM.	79	51	28	23	15	3	2.5	13	23	22	5	9	12	9	1

FILTER SIZE 10"x16" 1/2"x1" SHIPPING WGT. 117 lbs.  
25x41x2,5 cm. 53 kg.

Continuing engineering research results in steady improvements. Therefore, these ratings and specifications are subject to change without notice. No one is authorized to reproduce or alter this document in any way without the written authorization of an officer of the company.

# 804 SERIES HORIZONTAL WATER SOURCE HEAT PUMP SIZE: 015



**ClimateMaster**  
A COMBINATION OF CHILCORP AND  
FRIEDRICH® CLIMATE MASTER, INC.

**TAG:** \_\_\_\_\_

JOB SCHEDULE	TOTAL BTUH	INPUT WATTS	SENSIBLE BTUH	BTUH HEAT OF ABS./REJ.	EER COP	GPM	EWT	LWT	EAT	PRESSURE DROP IN FEET
COOLING										
HEATING										

ELECTRICAL DATA		BLOWER		COMPRESSOR		MIN CKT AMPACITY	MAX. FUSE OR HACR SIZE
VOLTAGE	PHASE	FLA	RLA	LRA			
208/230	1	.86	5.9	36.0	8.25	15	
265	1	.82	5.0	33.0	7.35	15	

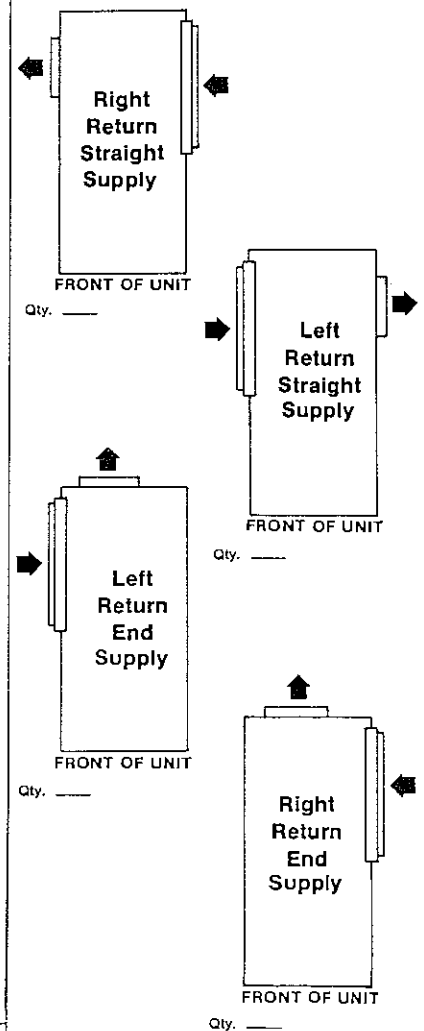
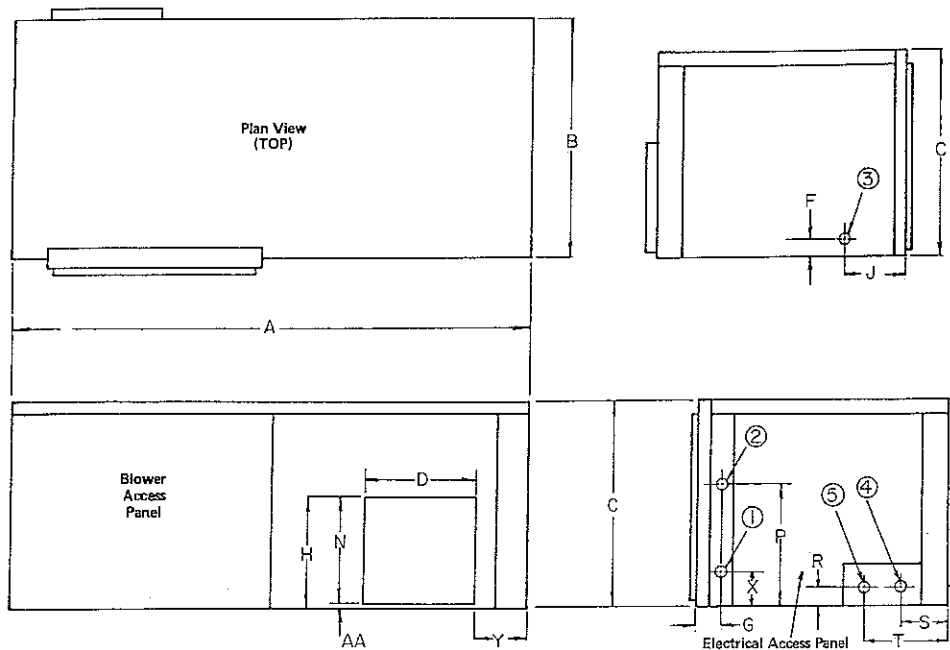
  

BLOWER PERFORMANCE				INSTALLED WEIGHT	
EXT. STATIC PRES. I.W.G.				lbs.	
CFM				kg.	

## DIMENSIONS

## AIR FLOW PATTERNS

- |                  | IN.           | CM.     |      |
|------------------|---------------|---------|------|
| 1 - High Voltage | 7/8" - 1 1/8" | 2,2-2,9 | Dia. |
| 2 - Low Voltage  | 1/2"          | 1,3     | Dia. |
| 3 - Cond. Drain  | 3/4"          | 1,9     | FPT  |
| 4 - Water Out    | 1/2"          | 1,3     | FPT  |
| 5 - Water In     | 1/2"          | 1,3     | FPT  |



SZ.	A	B	C	D	F	G	H	J	N	P	R	S	T	X	Y	Z	AA
IN.	43	20	17	10	1 1/4	1 1/4	8 3/4	5 1/2	7 1/2	9 3/4	2 1/4	3 1/4	4 1/2	3 3/8	3 1/2	1 1/2	1 1/4
CM.	109	51	43	25	3	3	22	13	19	25	6	8	11	8	9	4	3

FILTER SIZE 16"x22 1/4"x1" SHIPPING WGT. 153 lbs.  
41x56,5x2,5 cm. 69 kg.

Continuing engineering research results in steady improvements. Therefore, these ratings and specifications are subject to change without notice. No one is authorized to reproduce or alter this document in any way without the written authorization of an officer of the company.

# 804 SERIES HORIZONTAL WATER SOURCE HEAT PUMP SIZE: 019



## ClimateMaster

A COMBINATION OF CHP CORP. AND  
FRIEDRICH™ CLIMATE MASTER, INC.

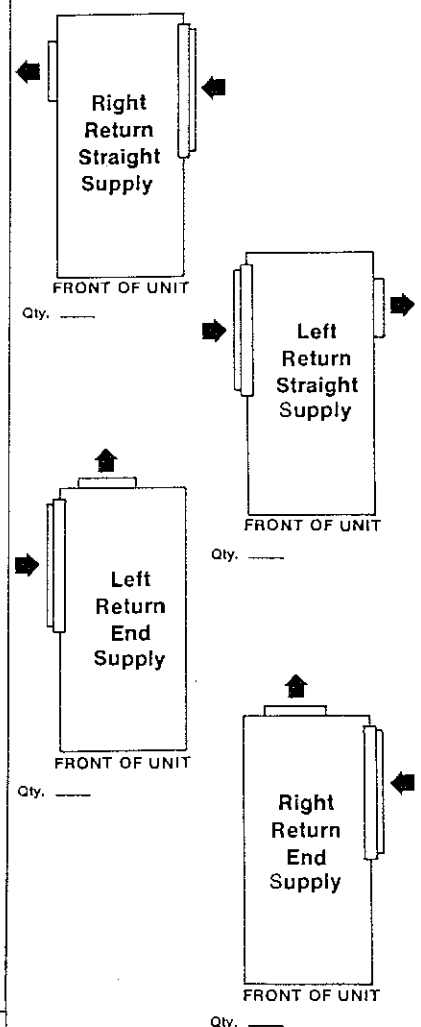
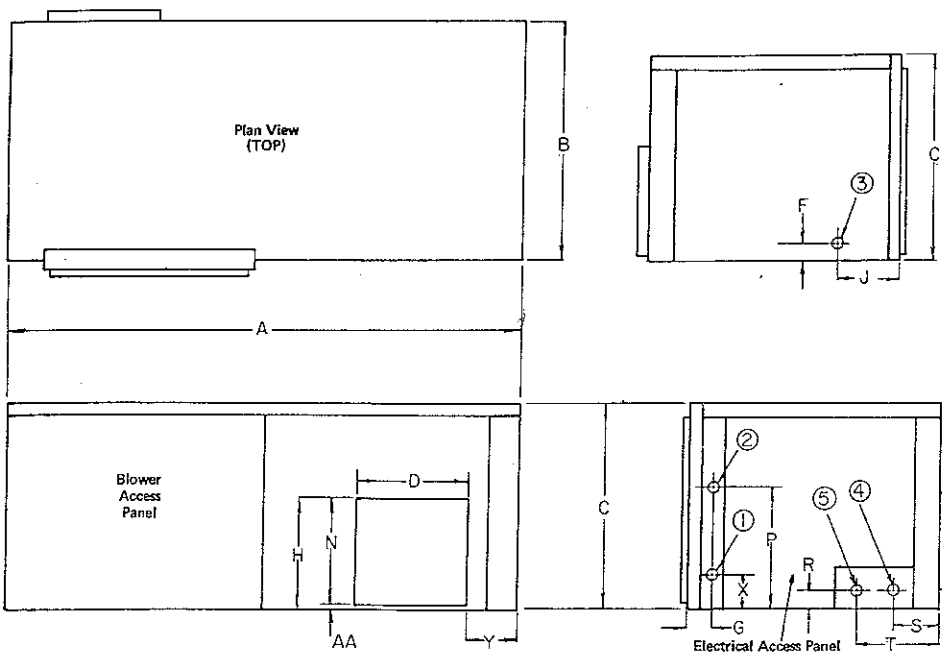
TAG: \_\_\_\_\_

JOB SCHEDULE	TOTAL BTUH	INPUT WATTS	SENSIBLE BTUH	BTUH HEAT OF ABS./REJ.	EER COP	GPM	EWT	LWT	EAT	PRESSURE DROP IN FEET
COOLING										
HEATING										
ELECTRICAL DATA		BLOWER		COMPRESSOR		MIN GKT AMPACITY		MAX, FUSE OR HACR SIZE		
VOLTAGE	PHASE	FLA	RLA	LRA						
208/230	1	1.5	7.6	40.6	11.1		15			
265	1	1.2	6.0	34.0	8.7		15			
BLOWER PERFORMANCE				INSTALLED WEIGHT						
EXT. STATIC PRES. I.W.G.				lbs.						
CFM				kg.						

### DIMENSIONS

### AIR FLOW PATTERNS

- |                  | IN.           | CM.       |      |
|------------------|---------------|-----------|------|
| 1 - High Voltage | 7/8" - 1 1/8" | 2, 2-2, 9 | Dia. |
| 2 - Low Voltage  | 1/8"          | 1, 3      | Dia. |
| 3 - Cond. Drain  | 3/4"          | 1, 9      | FPT  |
| 4 - Water Out    | 1/2"          | 1, 3      | FPT  |
| 5 - Water In     | 1/2"          | 1, 3      | FPT  |



SZ.	A	B	C	D	F	G	H	J	N	P	R	S	T	X	Y	Z	AA
IN.	43	20	17	9	1 1/4	1 1/4	12 1/2	5 1/4	12 1/2	9 1/4	2 1/2	3 1/2	4 1/2	3 3/16	3 1/2	1 1/2	0
CM.	109	51	43	23	3	3	32	13	32	25	6	8	11	8	9	4	0

FILTER SIZE 16"x22 1/4"x1" SHIPPING WGT. 180 lbs.  
41x56,5x2,5 cm. 81 kg.

Continuing engineering research results in steady improvements. Therefore, these ratings and specifications are subject to change without notice. No one is authorized to reproduce or alter this document in any way without the written authorization of an officer of the company.

# 804 SERIES HORIZONTAL WATER SOURCE HEAT PUMP SIZE: 025



## ClimateMaster

A COMBINATION OF CHP CORP. AND  
FRIEDRICH™ CLIMATE MASTER, INC.

**TAG:** \_\_\_\_\_

JOB SCHEDULE	TOTAL BTUH	INPUT WATTS	SENSIBLE BTUH	BTUH HEAT OF ABS./REJ.	EER COP	GPM	EWT	LWT	EAT	PRESSURE DROP IN FEET
COOLING										
HEATING										

ELECTRICAL DATA		BLOWER	COMPRESSOR		MIN CKT AMPACITY	MAX, FUSE OR HACR SIZE
VOLTAGE	PHASE	FLA	RLA	LRA		
208/230	1	1.6	11.8	54.0	16.4	25
265	1	1.5	9.3	45.0	14.4	20

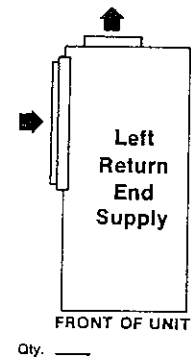
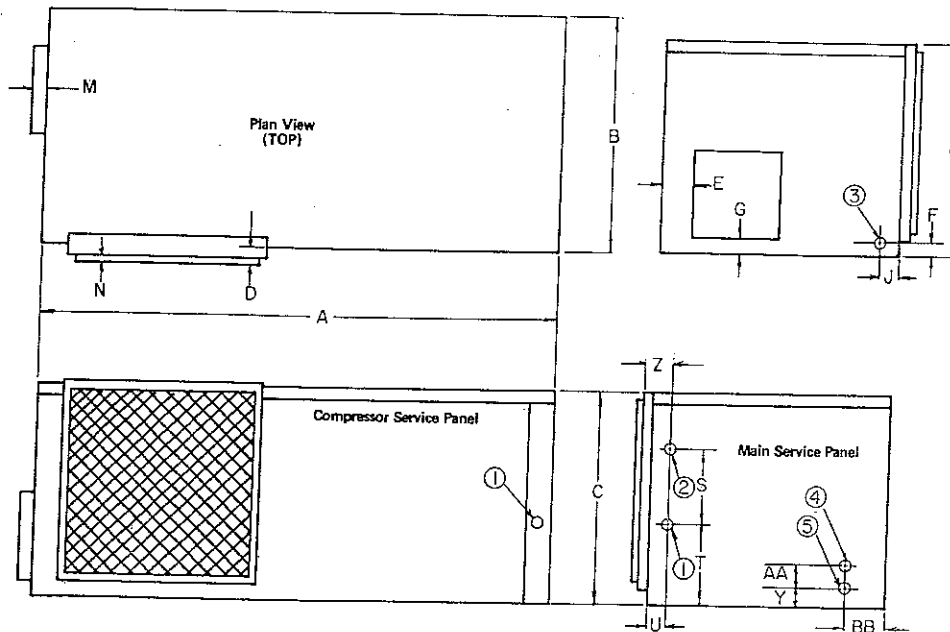
  

BLOWER PERFORMANCE			INSTALLED WEIGHT		
EXT. STATIC PRES. I.W.G.				lbs.	
CFM				kg.	

**DIMENSIONS**

**AIR FLOW PATTERNS**

- |                  | IN.         | CM.     |      |
|------------------|-------------|---------|------|
| 1 - High Voltage | 7/8"-1 1/8" | 2,2-2,9 | Dia. |
| 2 - Low Voltage  | 1/2"        | 1,3     | Dia. |
| 3 - Cond. Drain  | 3/4"        | 1,9     | FPT. |
| 4 - Water Out    | 3/4"        | 1,9     | FPT  |
| 5 - Water In     | 3/4"        | 1,9     | FPT  |

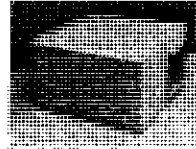


SZ	A	B	C	D	F	J	L	M	N	S	T	U	X	Y	Z	AA	BB
IN.	43	20	19	1 1/4	1 1/4	5 1/2	2 1/2	1	1/2	6	7 1/4	1	1 1/4	2 1/2	1 1/2	2 1/2	4 1/2
CM.	109	51	48	4	3	13	7	2,5	1	15	20	2,5	3	6	4	6	10

FILTER SIZE 18"x22 1/2"x1" SHIPPING WGT. 213 lbs.  
46x56,5x2,5 cm. 96 kg.

Continuing engineering research results in steady improvements. Therefore, these ratings and specifications are subject to change without notice. No one is authorized to reproduce or alter this document in any way without the written authorization of an officer of the company.

**804 SERIES  
HORIZONTAL WATER SOURCE  
HEAT PUMP  
SIZE: 025**



**ClimateMaster**  
A COMBINATION OF CHP CORP. AND  
FRIEDRICH™ CLIMATE MASTER, INC.

**TAG:** \_\_\_\_\_

JOB SCHEDULE	TOTAL BTUH	INPUT WATTS	SENSIBLE BTUH	BTUH HEAT OF ABS./REJ.	EER COP	GPM	EWT	LWT	EAT	PRESSURE DROP IN FEET
COOLING										
HEATING										

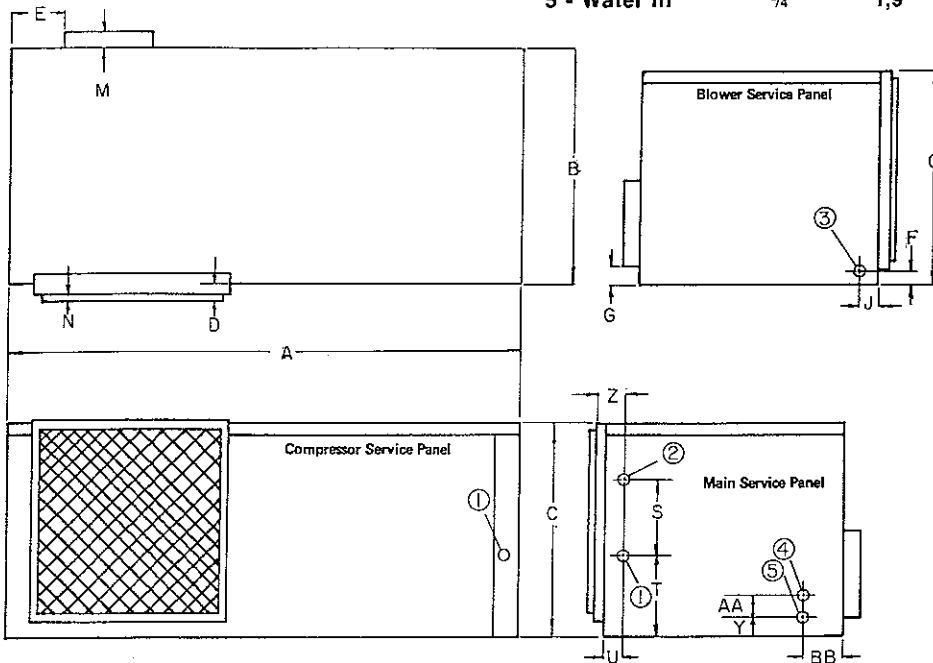
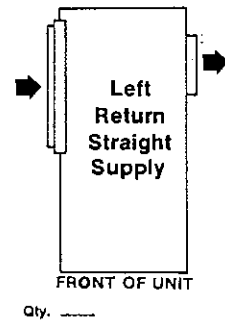
ELECTRICAL DATA		BLOWER	COMPRESSOR		MIN CKT AMPACITY	MAX, FUSE OR HACR SIZE
VOLTAGE	PHASE	FLA	RLA	LRA		
208/230	1	1.6	11.8	54.0	16.4	25
265	1	1.5	9.3	45.0	14.4	20

BLOWER PERFORMANCE			INSTALLED WEIGHT	
EXT. STATIC PRES. I.W.G.			lbs.	
CFM			kg.	

**DIMENSIONS**

**AIR FLOW PATTERNS**

- |                  | IN.           | CM.     |      |
|------------------|---------------|---------|------|
| 1 - High Voltage | 7/8" - 1 1/8" | 2,2-2,9 | Dia. |
| 2 - Low Voltage  | 1/2"          | 1,3     | Dia. |
| 3 - Cond. Drain  | 3/4"          | 1,9     | FPT  |
| 4 - Water Out    | 3/4"          | 1,9     | FPT  |
| 5 - Water In     | 3/4"          | 1,9     | FPT  |



SZ.	A	B	C	D	E	F	G	J	M	N	S	T	U	Y	Z	AA	BB
IN.	43	20	19	1 1/4		1 1/2		5 1/2	1	1/2	6	7 1/4	1 1/4	2 1/2	1 1/2	2 1/2	4 1/2
CM.	109	51	48	4		3		13	2,5	1	15	20	3	6	4	6	10

FILTER SIZE 18"x22 1/4"x1" SHIPPING WGT. 213 lbs.  
46x56,5x2,5 cm. 96 kg.

**804 SERIES  
HORIZONTAL WATER SOURCE  
HEAT PUMP  
SIZE: 025**



**ClimateMaster**

A COMBINATION OF CHP CORP. AND  
FRIEDRICH™ CLIMATE MASTER, INC.

**TAG:** \_\_\_\_\_

JOB SCHEDULE	TOTAL BTUH	INPUT WATTS	SENSIBLE BTUH	BTUH HEAT OF ABS./REJ.	EER COP	GPM	EWT	LWT	EAT	PRESSURE DROP IN FEET
COOLING										
HEATING										

ELECTRICAL DATA		BLOWER	COMPRESSOR		MIN CKT AMPACITY	MAX. FUSE OR HACR SIZE
VOLTAGE	PHASE	FLA	RLA	LRA		
208/230	1	1.6	11.8	54.0	16.4	25
265	1	1.5	9.3	45.0	14.4	20

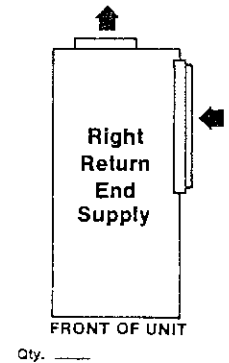
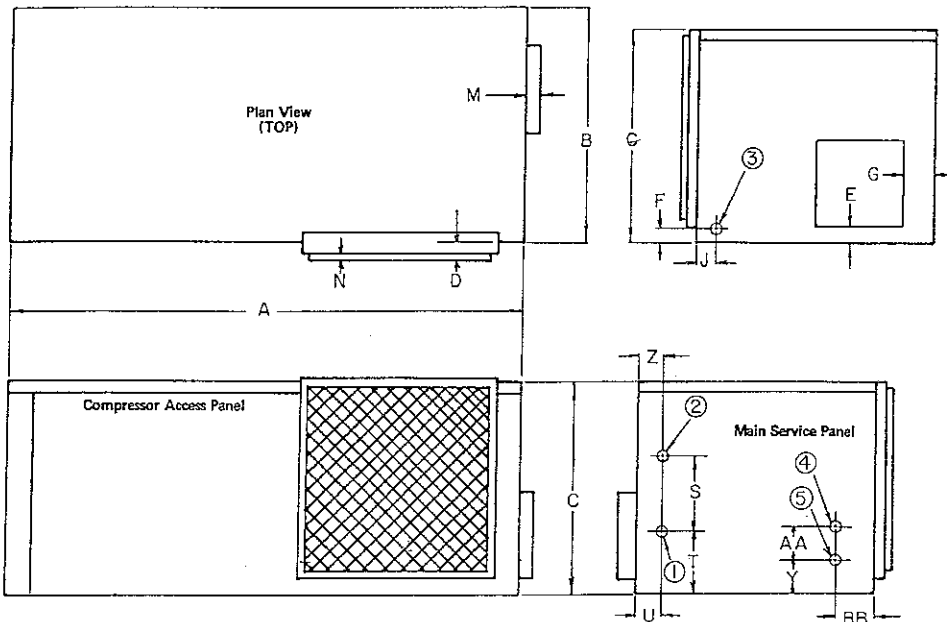
  

BLOWER PERFORMANCE			INSTALLED WEIGHT		
EXT. STATIC PRES. I.W.G.			lbs.		
CFM			kg.		

**DIMENSIONS**

**AIR FLOW PATTERNS**

- |                  | IN.         | CM.     |      |
|------------------|-------------|---------|------|
| 1 - High Voltage | 7/8"-1 1/8" | 2,2-2,9 | Dia. |
| 2 - Low Voltage  | 1/2"        | 1,3     | Dia. |
| 3 - Cond. Drain  | 3/4"        | 1,9     | FPT  |
| 4 - Water Out    | 3/4"        | 1,9     | FPT  |
| 5 - Water In     | 3/4"        | 1,9     | FPT  |



SZ.	A	B	C	D	E	F	G	J	M	N	S	T	U	Y	Z	AA	BB
IN.	43	20	19	1 3/4	1 1/8	1 1/4	2 3/8	5 1/4	1	1/2	6	7 3/4	1	2 1/4	1 1/4	2 1/4	4 1/4
CM.	109	51	48	4	3	3	7	13	2,5	1	15	20	2,5	6	4	6	10

**FILTER SIZE** 18"x22 1/4"x1"  
46x56,5x2,5 cm.

**SHIPPING WGT.** 213 lbs.  
96 kg.

Continuing engineering research results in steady improvements. Therefore, these ratings and specifications are subject to change without notice. No one is authorized to reproduce or alter this document in any way without the written authorization of an officer of the company.

**804 SERIES  
HORIZONTAL WATER SOURCE  
HEAT PUMP  
SIZE: 025**



**ClimateMaster**

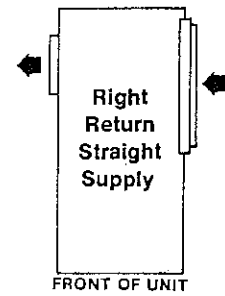
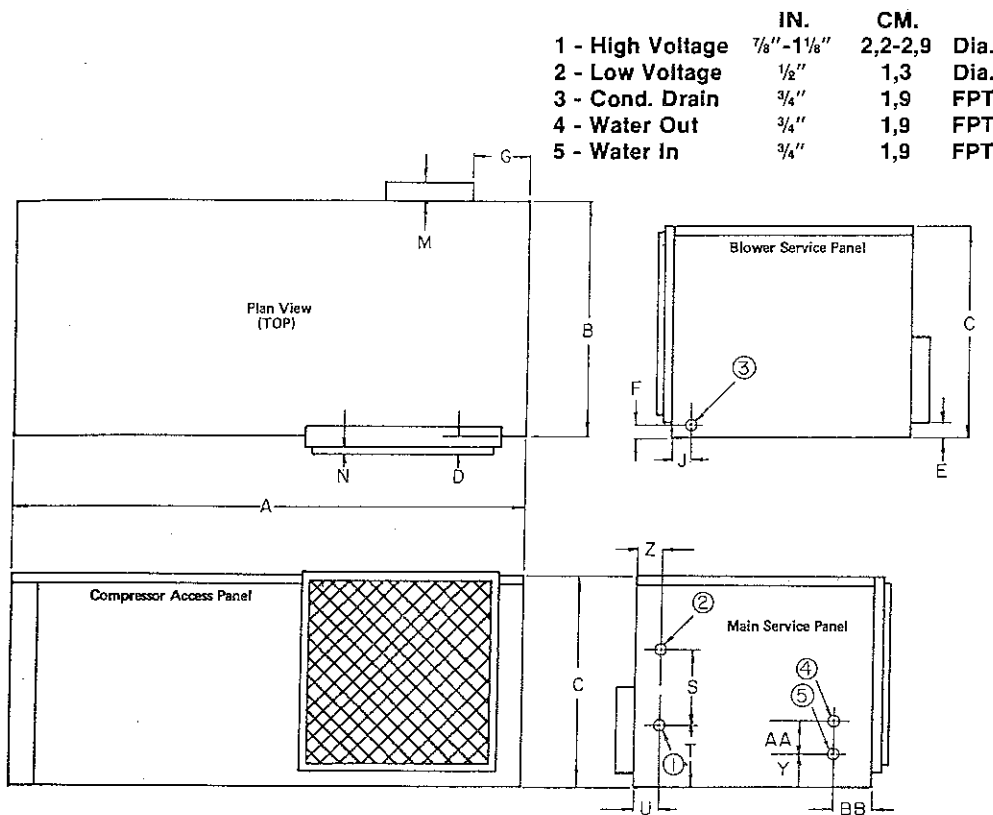
A COMBINATION OF CHP CORP. AND  
FRIEDRICH™ CLIMATE MASTER, INC.

**TAG:** \_\_\_\_\_

JOB SCHEDULE	TOTAL BTUH	INPUT WATTS	SENSIBLE BTUH	BTUH HEAT OF ABS./REJ.	EER COP	GPM	EWT	LWT	EAT	PRESSURE DROP IN FEET
COOLING										
HEATING										
ELECTRICAL DATA		BLOWER		COMPRESSOR		MIN CKT AMPACITY		MAX, FUSE OR HACR SIZE		
VOLTAGE	PHASE	FLA	RLA	LRA						
208/230	1	1.6	11.8	54.0	16.4		25			
265	1	1.5	9.3	45.0	14.4		20			
BLOWER PERFORMANCE						INSTALLED WEIGHT				
EXT. STATIC PRES. I.W.G.						lbs.				
CFM						kg.				

**DIMENSIONS**

**AIR FLOW PATTERNS**



Qty. \_\_\_\_\_

SZ.	A	B	C	D	F	G	J	M	N	S	T	U	Y	Z	AA	BB
IN.	43	20	19	1 3/4	1 1/4	2 1/2	5 1/2	1	1/2	6	7 1/2	1 1/4	2 1/2	1 1/2	2 1/2	4
CM.	109	51	48	4	3	7	13	2,5	1	15	20	3	6	4	6	10

FILTER SIZE 18"x22 1/4"x1" SHIPPING WGT. 213 lbs.  
46x56,5x2,5 cm. 96 kg.

Continuing engineering research results in steady improvements. Therefore, these ratings and specifications are subject to change without notice. No one is authorized to reproduce or alter this document in any way without the written authorization of an officer of the company.



**804 SERIES  
HORIZONTAL WATER SOURCE  
HEAT PUMP  
SIZE: 031**



**ClimateMaster**

A COMBINATION OF CHP CORP. AND  
FRIEDRICH™ CLIMATE MASTER, INC.

**TAG:** \_\_\_\_\_

JOB SCHEDULE	TOTAL BTUH	INPUT WATTS	SENSIBLE BTUH	BTUH HEAT OF ABS./REJ.	EER COP	GPM	EWT	LWT	EAT	PRESSURE DROP IN FEET
COOLING										
HEATING										

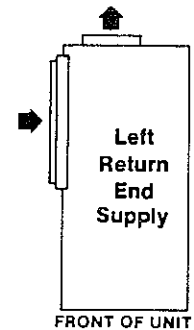
ELECTRICAL DATA		BLOWER	COMPRESSOR		MIN CKT AMPACITY	MAX. FUSE OR HACR SIZE
VOLTAGE	PHASE	FLA	RLA	LRA		
208/230	1	2.0	14.0	65.0	19.5	30
265	1	1.6	11.2	55.0	17.2	25
208/230	3	2.0	9.2	60.0	13.9	20
460	3	1.0	4.4	28.0	6.5	15

BLOWER PERFORMANCE		INSTALLED WEIGHT	
EXT. STATIC PRES. I.W.G.		lbs.	
CFM		kg.	

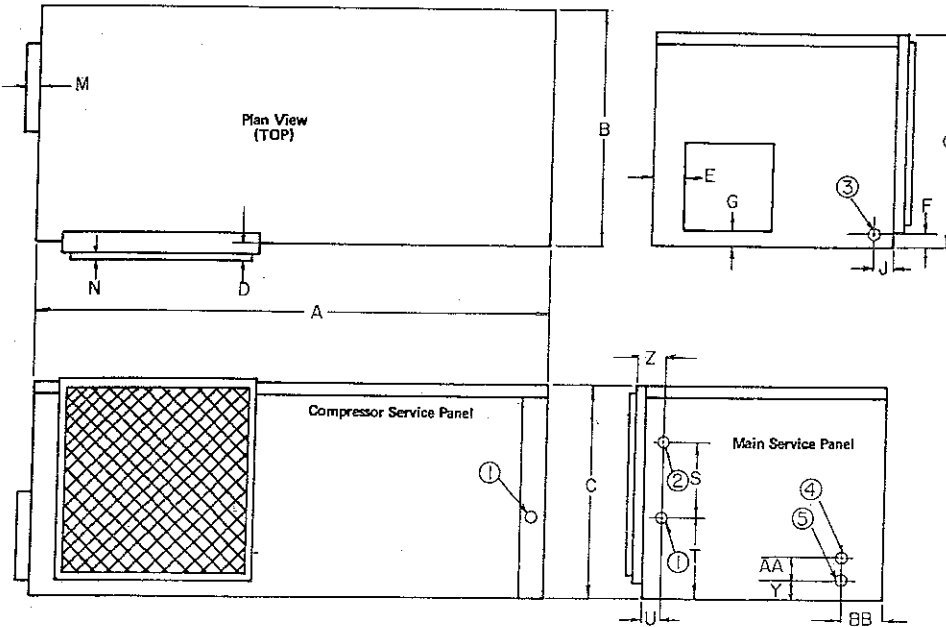
**DIMENSIONS**

**AIR FLOW PATTERNS**

- |                  | IN.           | CM.     |      |
|------------------|---------------|---------|------|
| 1 - High Voltage | 7/8" - 1 1/8" | 2,2-2,9 | Dia. |
| 2 - Low Voltage  | 1/2"          | 1,3     | Dia. |
| 3 - Cond. Drain  | 3/4"          | 1,9     | FPT  |
| 4 - Water Out    | 3/4"          | 1,9     | FPT  |
| 5 - Water In     | 3/4"          | 1,9     | FPT  |



Qty. \_\_\_\_\_



SZ.	A	B	C	D	F	J	L	M	N	S	T	U	X	Y	Z	AA	BB
IN.	43	20	19	1 1/4	1 1/4	5 1/2	2 1/2	1	1/2	6	7 3/4	1	1 1/8	2 1/2	1 1/2	2 1/2	4 1/4
CM.	109	51	48	4	3	13	7	2,5	1	15	20	2,5	3	6	4	6	10

FILTER SIZE	18"x22 1/4"x1"	SHIPPING WGT.	225 lbs.
	46x56,5x2,5 cm.		101 kg.

Continuing engineering research results in steady improvements. Therefore, these ratings and specifications are subject to change without notice. No one is authorized to reproduce or alter this document in any way without the written authorization of an officer of the company.

**804 SERIES  
HORIZONTAL WATER SOURCE  
HEAT PUMP  
SIZE: 031**



**ClimateMaster**  
A SUBSIDIARY OF CH-P CORP. AND  
PREDICT-IT CLIMATE MASTER, INC.

**TAG:** \_\_\_\_\_

JOB SCHEDULE	TOTAL BTUH	INPUT WATTS	SENSIBLE BTUH	BTUH HEAT OF ABS./REJ.	EER COP	GPM	EWT	LWT	EAT	PRESSURE DROP IN FEET
COOLING										
HEATING										

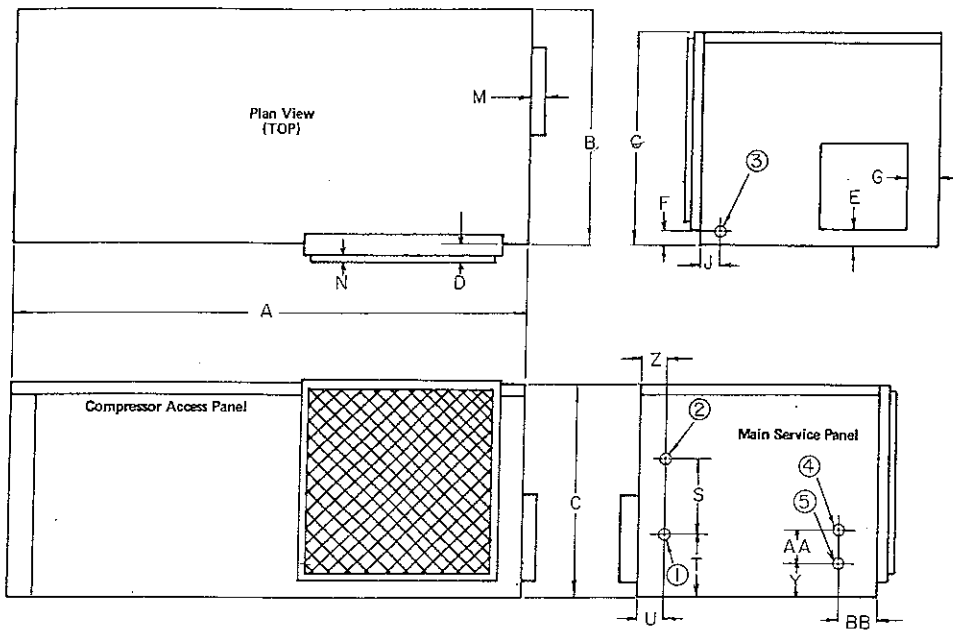
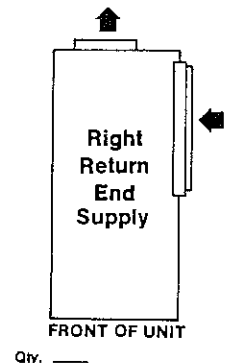
ELECTRICAL DATA		BLOWER	COMPRESSOR		MIN CKT AMPACITY	MAX. FUSE OR HACR SIZE
VOLTAGE	PHASE	FLA	RLA	LRA		
208/230	1	2.0	14.0	65.0	19.5	30
265	1	1.6	11.2	55.0	17.2	25
208/230	3	2.0	9.2	60.0	13.9	20
460	3	1.0	4.4	28.0	6.5	15

BLOWER PERFORMANCE			INSTALLED WEIGHT		
EXT. STATIC PRES. I.W.G.			lbs.		
CFM			kg.		

**DIMENSIONS**

**AIR FLOW PATTERNS**

- |                  |               |            |      |
|------------------|---------------|------------|------|
|                  | <b>IN.</b>    | <b>CM.</b> |      |
| 1 - High Voltage | 7/8" - 1 1/8" | 2,2-2,9    | Dia. |
| 2 - Low Voltage  | 1/2"          | 1,3        | Dia. |
| 3 - Cond. Drain  | 3/4"          | 1,9        | FPT  |
| 4 - Water Out    | 3/4"          | 1,9        | FPT  |
| 5 - Water In     | 3/4"          | 1,9        | FPT  |



SZ	A	B	C	D	E	F	G	J	M	N	S	T	U	Y	Z	AA	BB
IN.	43	20	19	1 1/4	1 1/8	1 1/8	2 1/8	5 1/8	1	1/2	6	7 1/4	1	2 1/4	1 1/2	2 1/2	4 1/4
CM.	109	51	48	4	3	3	7	13	2,5	1	15	20	2,5	6	4	6	10

FILTER SIZE	18"x22 1/4"x1"	SHIPPING WGT.	225 lbs.
	46x56,5x2,5 cm.		101 kg.

Continuing engineering research results in steady improvements. Therefore, these ratings and specifications are subject to change without notice. No one is authorized to reproduce or alter this document in any way without the written authorization of an officer of the company.

# 804 SERIES HORIZONTAL WATER SOURCE HEAT PUMP SIZE: 037



## ClimateMaster

A COMBINATION OF CHP CORP. AND  
FRIEDRICH\*\* CLIMATE MASTER, INC.

**TAG:** \_\_\_\_\_

JOB SCHEDULE	TOTAL BTUH	INPUT WATTS	SENSIBLE BTUH	BTUH HEAT OF ABS./REJ.	EER COP	GPM	EWT	LWT	EAT	PRESSURE DROP IN FEET
COOLING										
HEATING										

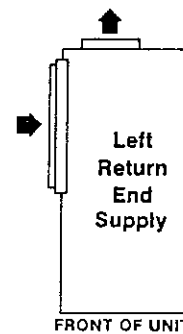
ELECTRICAL DATA		BLOWER	COMPRESSOR		MIN CKT AMPACITY	MAX. FUSE OR HACR SIZE
VOLTAGE	PHASE	FLA	RLA	LRA		
208/230	1	3.2	15.8	75.8	23.0	35
265	1	3.2	13.5	70.0	21.6	35
208/230	3	3.2	10.4	65.0	16.7	25
460	3	1.8	5.2	32.0	8.3	15

BLOWER PERFORMANCE		INSTALLED WEIGHT	
EXT. STATIC PRES. I.W.G.		lbs.	
CFM		kg.	

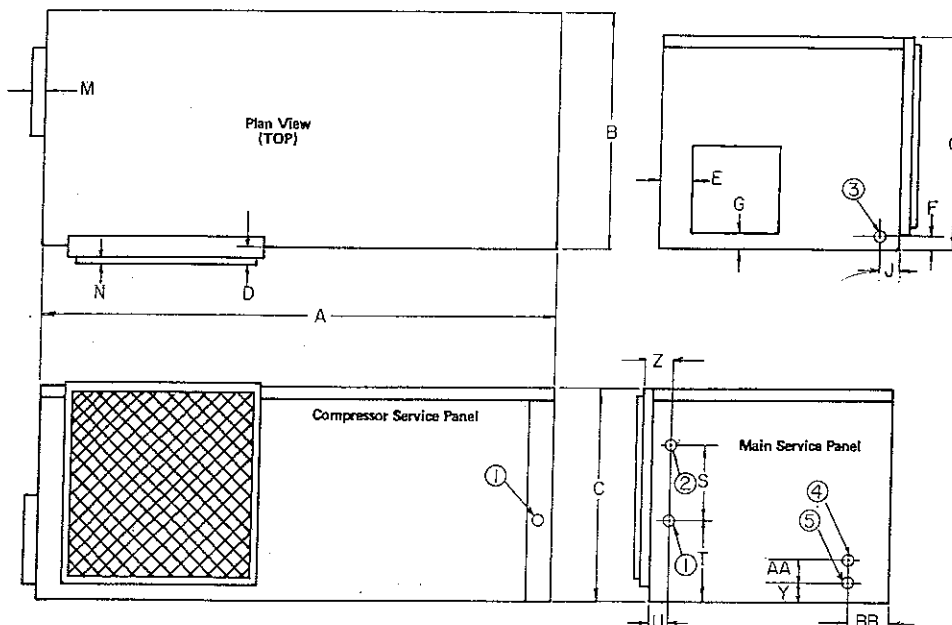
### DIMENSIONS

### AIR FLOW PATTERNS

- |                  | IN.           | CM.     |      |
|------------------|---------------|---------|------|
| 1 - High Voltage | 7/8" - 1 1/8" | 2,2-2,9 | Dia. |
| 2 - Low Voltage  | 1/2"          | 1,3     | Dia. |
| 3 - Cond. Drain  | 3/4"          | 1,9     | FPT  |
| 4 - Water Out    | 3/4"          | 1,9     | FPT  |
| 5 - Water In     | 3/4"          | 1,9     | FPT  |



Qty. \_\_\_\_\_



SZ	A	B	C	D	F	J	L	M	N	S	T	U	X	Y	Z	AA	BB
IN.	47	20	21	1 1/2	1 1/4	5	4	1	1/2	6	7 3/4	1	2 1/8	2 1/2	1 1/2	2 1/2	5 1/4
CM.	119	51	53	4	3	13	10	2,5	1	15	20	2,5	5	6	4	6	13

FILTER SIZE	20"x25"x1"	SHIPPING WGT.	235 lbs.
	51x63,5x2,5 cm.		106 kg.

Continuing engineering research results in steady improvements. Therefore, these ratings and specifications are subject to change without notice. No one is authorized to reproduce or alter this document in any way without the written authorization of an officer of the company.

# 804 SERIES HORIZONTAL WATER SOURCE HEAT PUMP SIZE: 037



## ClimateMaster

A COMBINATION OF CHP CORP. AND  
FRIEDRICH™ CLIMATE MASTER, INC.

**TAG:** \_\_\_\_\_

JOB SCHEDULE	TOTAL BTUH	INPUT WATTS	SENSIBLE BTUH	BTUH HEAT OF ABS./REJ.	EER COP	GPM	EWT	LWT	EAT	PRESSURE DROP IN FEET
COOLING										
HEATING										

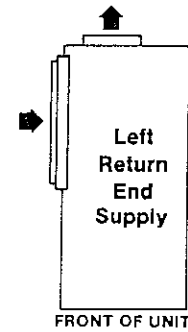
ELECTRICAL DATA		BLOWER	COMPRESSOR		MIN CKT AMPACITY	MAX. FUSE OR HACR SIZE
VOLTAGE	PHASE	FLA	RLA	LRA		
208/230	1	3.2	15.8	75.8	23.0	35
265	1	3.2	13.5	70.0	21.6	35
208/230	3	3.2	10.4	65.0	16.7	25
460	3	1.8	5.2	32.0	8.3	15

BLOWER PERFORMANCE		INSTALLED WEIGHT	
EXT. STATIC PRES. I.W.G.		lbs.	
CFM		kg.	

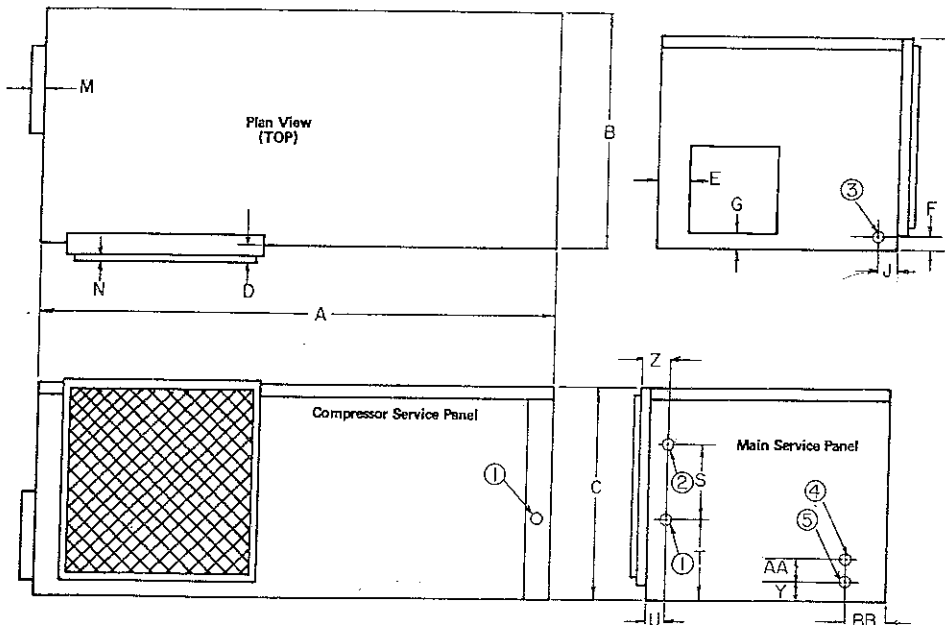
### DIMENSIONS

### AIR FLOW PATTERNS

- |                  | IN.           | CM.     |      |
|------------------|---------------|---------|------|
| 1 - High Voltage | 7/8" - 1 1/8" | 2,2-2,9 | Dia. |
| 2 - Low Voltage  | 1/2"          | 1,3     | Dia. |
| 3 - Cond. Drain  | 3/4"          | 1,9     | FPT  |
| 4 - Water Out    | 3/4"          | 1,9     | FPT  |
| 5 - Water In     | 3/4"          | 1,9     | FPT  |



Qty. \_\_\_\_\_

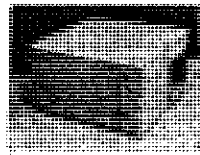


SZ.	A	B	C	D	F	J	L	M	N	S	T	U	X	Y	Z	AA	BB
IN.	47	20	21	1 1/4	1 1/4	5	4	1	1/4	6	7 1/4	1	2 1/4	2 1/2	1 1/2	2 1/2	5 1/4
CM.	119	51	53	4	3	13	10	2.5	1	15	20	2.5	5	6	4	6	13

FILTER SIZE	20"x25"x1"	SHIPPING WGT.	235 lbs.
	51x63,5x2,5 cm.		106 kg.

Continuing engineering research results in steady improvements. Therefore, these ratings and specifications are subject to change without notice. No one is authorized to reproduce or alter this document in any way without the written authorization of an officer of the company.

**804 SERIES  
HORIZONTAL WATER SOURCE  
HEAT PUMP  
SIZE: 009**



**ClimateMaster**  
A COMBINATION OF CHP CORP. AND  
FRIEDRICH™ CLIMATE MASTER, INC.

**TAG:** \_\_\_\_\_

JOB SCHEDULE	TOTAL BTUH	INPUT WATTS	SENSIBLE BTUH	BTUH HEAT OF ABS./REJ.	EER COP	GPM	EWT	LWT	EAT	PRESSURE DROP IN FEET
COOLING										
HEATING										

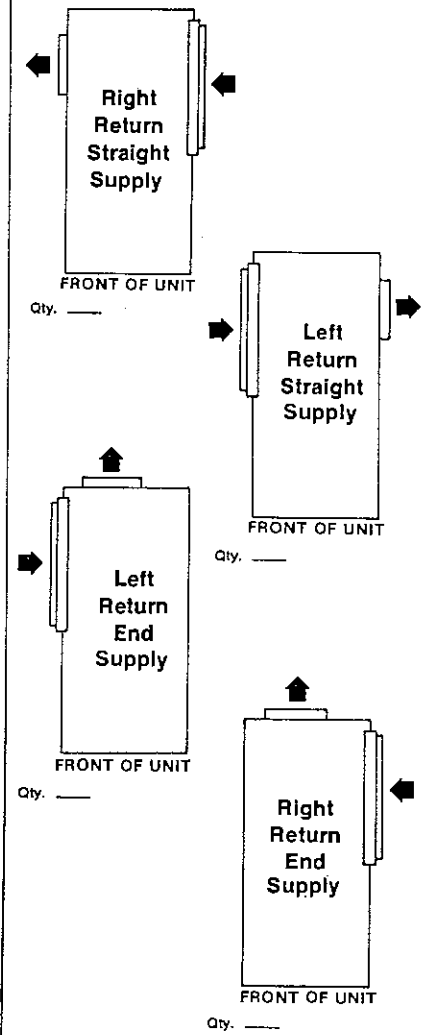
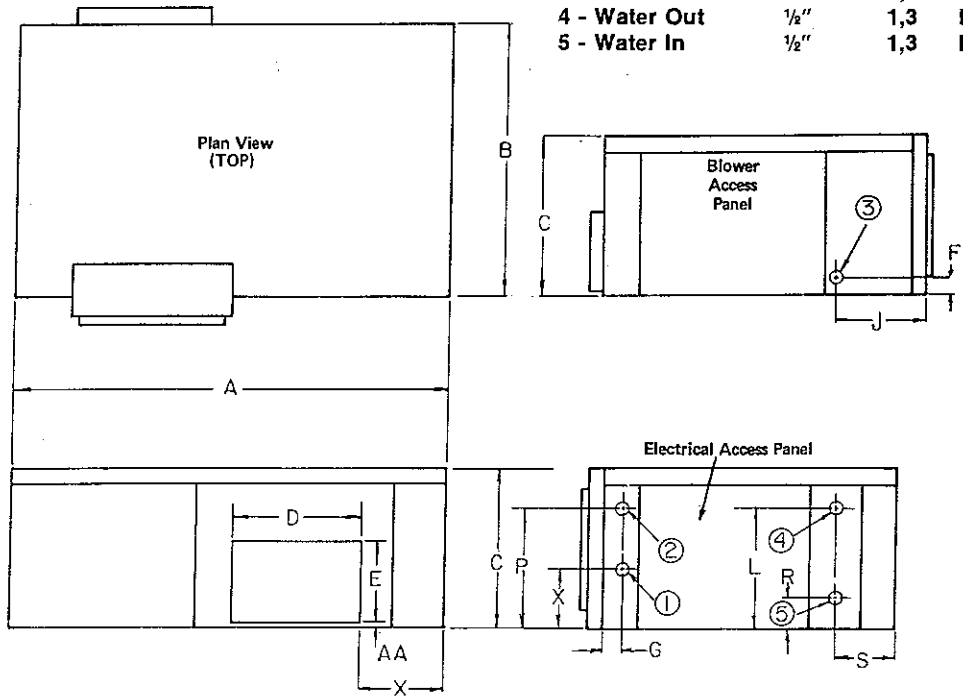
ELECTRICAL DATA		BLOWER	COMPRESSOR		MIN CKT AMPACITY	MAX, FUSE OR HACR SIZE
VOLTAGE	PHASE	FLA	RLA	LRA		
208/230	1	.50	3.3	20.0	4.6	15
265	1	.50	2.8	16.0	4.0	15

BLOWER PERFORMANCE		INSTALLED WEIGHT	
EXT. STATIC PRES. I.W.G.		lbs.	
CFM		kg.	

**DIMENSIONS**

**AIR FLOW PATTERNS**

- 1 - High Voltage  $\frac{7}{8}$ "-1 $\frac{1}{8}$ " IN. 2,2-2,9 CM. Dia.
- 2 - Low Voltage  $\frac{1}{2}$ " IN. 1,3 CM. Dia.
- 3 - Cond. Drain  $\frac{3}{4}$ " IN. 1,9 CM. FPT
- 4 - Water Out  $\frac{1}{2}$ " IN. 1,3 CM. FPT
- 5 - Water In  $\frac{1}{2}$ " IN. 1,3 CM. FPT



SZ.	A	B	C	D	E	F	G	J	L	P	R	S	X	Y	AA
IN.	31	20	11 $\frac{1}{2}$	9	6	1 $\frac{1}{2}$	1	5 $\frac{1}{2}$	8 $\frac{1}{2}$	8 $\frac{1}{2}$	2	3 $\frac{1}{2}$	4 $\frac{1}{2}$	3 $\frac{3}{16}$	$\frac{1}{2}$
CM.	79	51	28	23	15	3	2,5	13	23	22	5	9	12	9	1

FILTER SIZE 10"x16"x1" SHIPPING WGT. 108 lbs.  
25x41x2,5 cm. 49 kg.

# 804 SERIES HORIZONTAL WATER SOURCE HEAT PUMP SIZE: 012



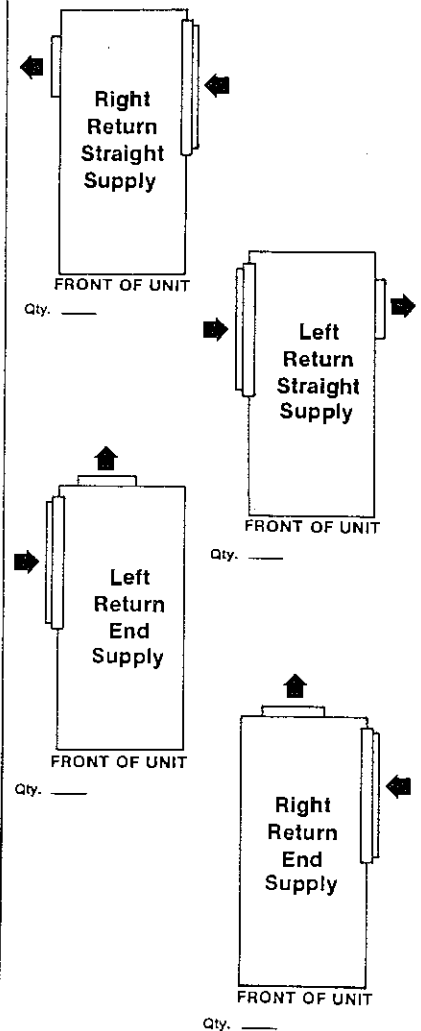
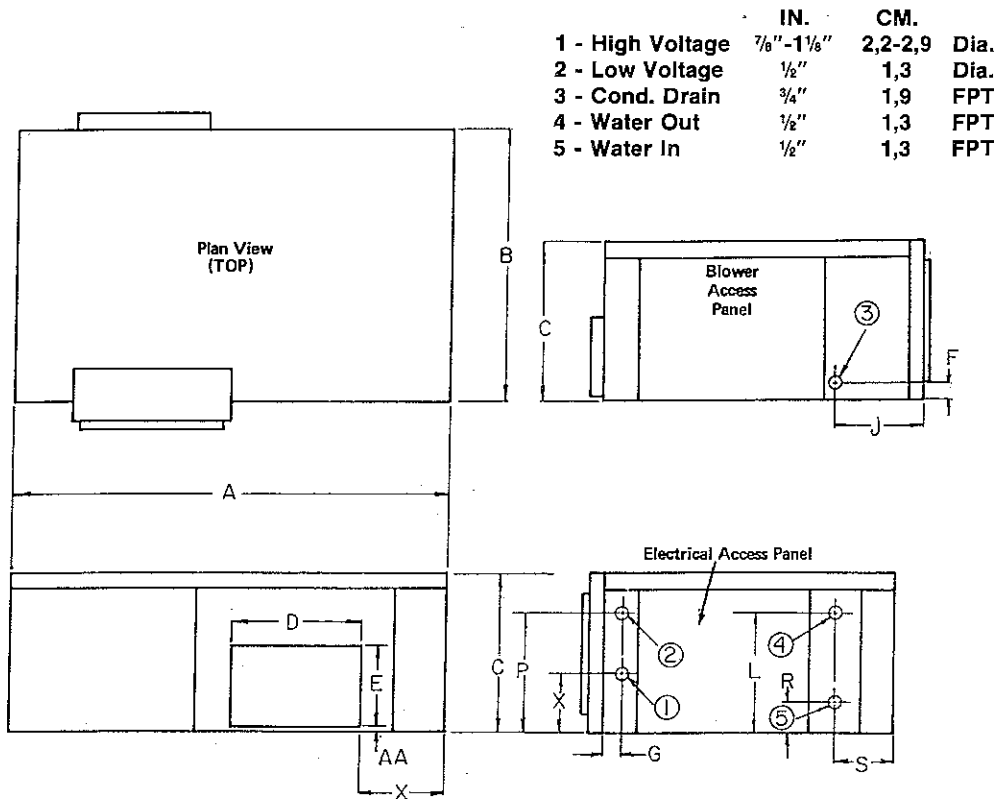
**ClimateMaster**  
A COMBINATION OF CHILLED WATER  
AND DIRECT EXPANSION CLIMATE MASTER, INC.

**TAG:** \_\_\_\_\_

JOB SCHEDULE	TOTAL BTUH	INPUT WATTS	SENSIBLE BTUH	BTUH HEAT OF ABS./REJ.	EER COP	GPM	EWT	LWT	EAT	PRESSURE DROP IN FEET
COOLING										
HEATING										
ELECTRICAL DATA		BLOWER		COMPRESSOR		MIN CKT AMPACITY		MAX. FUSE OR HACR SIZE		
VOLTAGE	PHASE	FLA	RLA	LRA						
208/230	1	.80	6.3	31.0	8.7		15			
265	1	.81	4.9	27.0	6.9		15			
BLOWER PERFORMANCE						INSTALLED WEIGHT				
EXT. STATIC PRES. I.W.G.						lbs.				
CFM						kg.				

### DIMENSIONS

### AIR FLOW PATTERNS



SZ	A	B	C	D	E	F	G	J	L	P	R	S	X	Y	AA
IN.	31	20	11 1/2	9	6	1 1/4	1	5 1/4	8 3/4	8 1/2	2	3 1/2	4 1/4	3 3/16	1/2
CM.	79	51	28	23	15	3	2.5	13	23	22	5	9	12	9	1

FILTER SIZE 10"x16" 1/2"x1" SHIPPING WGT. 117 lbs.  
25x41x2,5 cm. 53 kg.

Continuing engineering research results in steady improvements. Therefore, these ratings and specifications are subject to change without notice. No one is authorized to reproduce or alter this document in any way without the written authorization of an officer of the company.

# 804 SERIES HORIZONTAL WATER SOURCE HEAT PUMP SIZE: 015



**ClimateMaster**  
A COMBINATION OF CHILCORP AND  
FRIEDRICH® CLIMATE MASTER, INC.

**TAG:** \_\_\_\_\_

JOB SCHEDULE	TOTAL BTUH	INPUT WATTS	SENSIBLE BTUH	BTUH HEAT OF ABS./REJ.	EER COP	GPM	EWT	LWT	EAT	PRESSURE DROP IN FEET
COOLING										
HEATING										

ELECTRICAL DATA		BLOWER		COMPRESSOR		MIN CKT AMPACITY	MAX. FUSE OR HACR SIZE
VOLTAGE	PHASE	FLA	RLA	LRA			
208/230	1	.86	5.9	36.0	8.25	15	
265	1	.82	5.0	33.0	7.35	15	

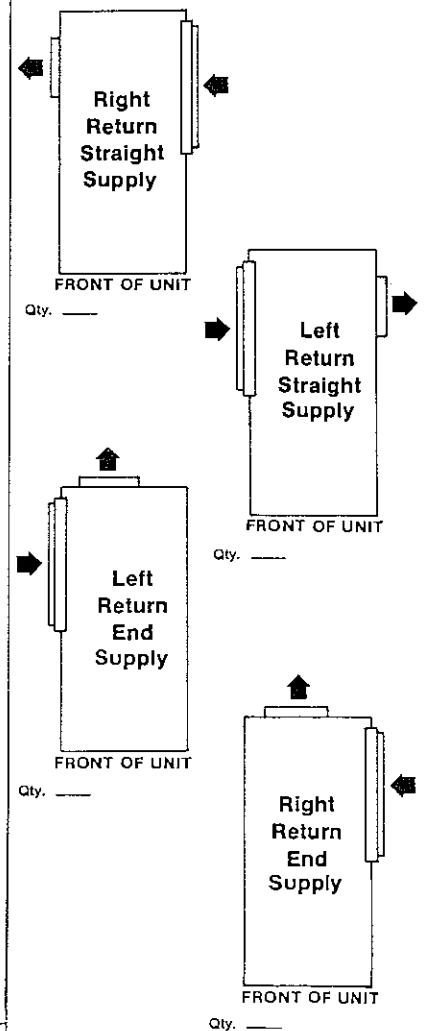
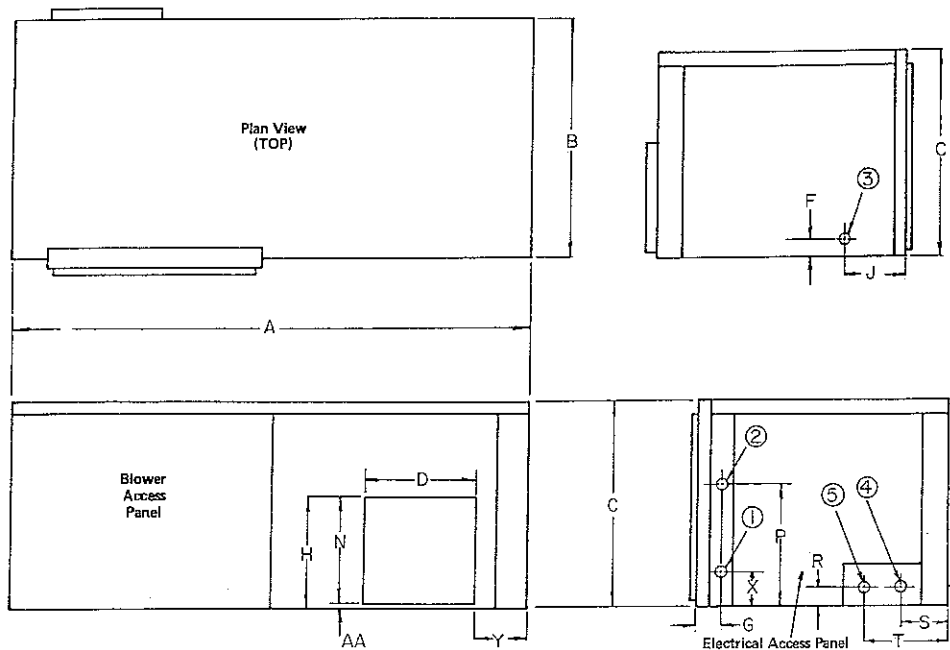
  

BLOWER PERFORMANCE				INSTALLED WEIGHT	
EXT. STATIC PRES. I.W.G.				lbs.	
CFM				kg.	

### DIMENSIONS

### AIR FLOW PATTERNS

- |                  | IN.           | CM.     |      |
|------------------|---------------|---------|------|
| 1 - High Voltage | 7/8" - 1 1/8" | 2,2-2,9 | Dia. |
| 2 - Low Voltage  | 1/2"          | 1,3     | Dia. |
| 3 - Cond. Drain  | 3/4"          | 1,9     | FPT  |
| 4 - Water Out    | 1/2"          | 1,3     | FPT  |
| 5 - Water In     | 1/2"          | 1,3     | FPT  |



SZ.	A	B	C	D	F	G	H	J	N	P	R	S	T	X	Y	Z	AA
IN.	43	20	17	10	1 1/4	1 1/4	8 3/4	5 1/2	7 1/2	9 3/4	2 1/4	3 1/4	4 1/2	3 3/8	3 1/2	1 1/2	1 1/4
CM.	109	51	43	25	3	3	22	13	19	25	6	8	11	8	9	4	3

FILTER SIZE 16"x22 1/4"x1" SHIPPING WGT. 153 lbs.  
41x56,5x2,5 cm. 69 kg.

Continuing engineering research results in steady improvements. Therefore, these ratings and specifications are subject to change without notice. No one is authorized to reproduce or alter this document in any way without the written authorization of an officer of the company.

# 804 SERIES HORIZONTAL WATER SOURCE HEAT PUMP SIZE: 019



## ClimateMaster

A COMBINATION OF CHP CORP. AND  
FRIEDRICH™ CLIMATE MASTER, INC.

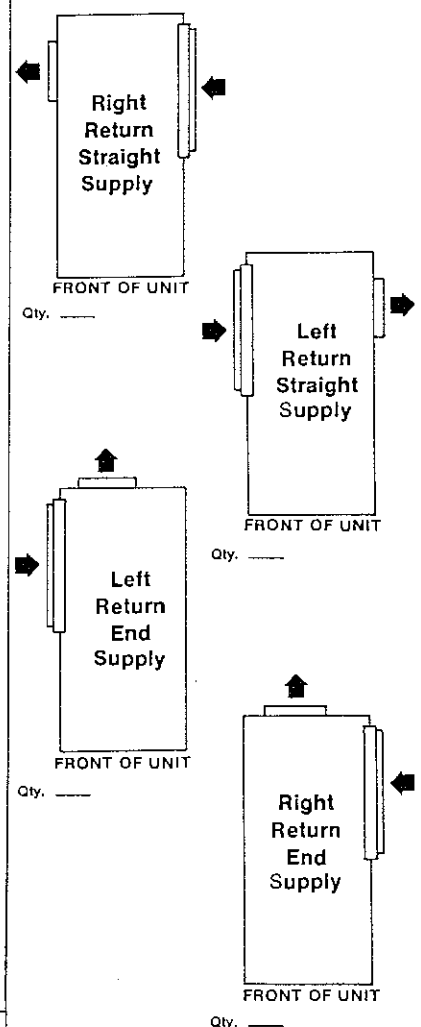
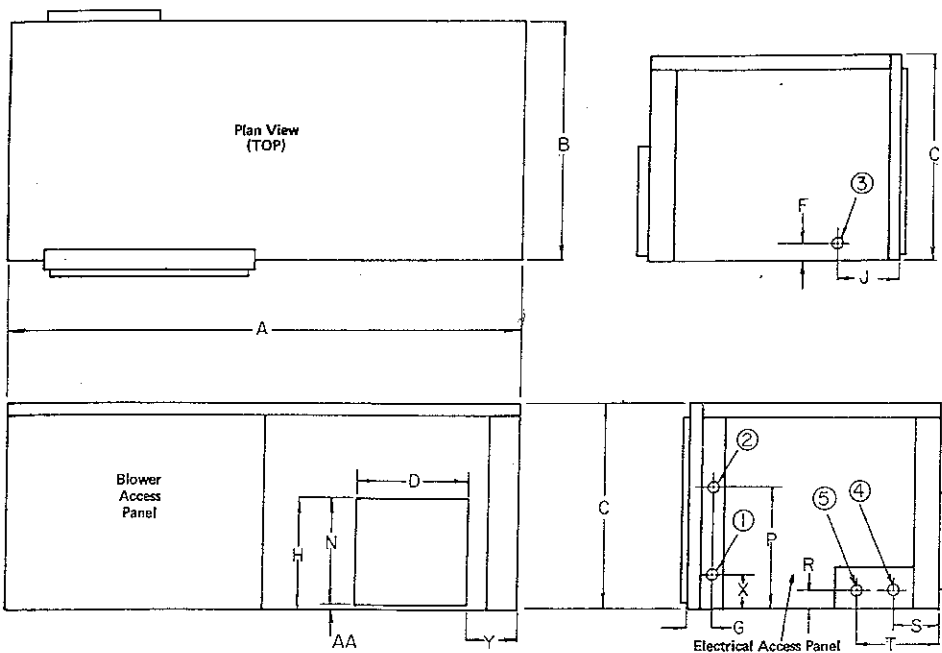
**TAG:** \_\_\_\_\_

JOB SCHEDULE	TOTAL BTUH	INPUT WATTS	SENSIBLE BTUH	BTUH HEAT OF ABS./REJ.	EER COP	GPM	EWT	LWT	EAT	PRESSURE DROP IN FEET
COOLING										
HEATING										
ELECTRICAL DATA		BLOWER		COMPRESSOR		MIN GKT AMPACITY		MAX, FUSE OR HACR SIZE		
VOLTAGE	PHASE	FLA	RLA	LRA						
208/230	1	1.5	7.6	40.6	11.1		15			
265	1	1.2	6.0	34.0	8.7		15			
BLOWER PERFORMANCE				INSTALLED WEIGHT						
EXT. STATIC PRES. I.W.G.				lbs.						
CFM				kg.						

### DIMENSIONS

### AIR FLOW PATTERNS

- |                  | IN.           | CM.       |      |
|------------------|---------------|-----------|------|
| 1 - High Voltage | 7/8" - 1 1/8" | 2, 2-2, 9 | Dia. |
| 2 - Low Voltage  | 1/2"          | 1, 3      | Dia. |
| 3 - Cond. Drain  | 3/4"          | 1, 9      | FPT  |
| 4 - Water Out    | 1/2"          | 1, 3      | FPT  |
| 5 - Water In     | 1/2"          | 1, 3      | FPT  |



SZ.	A	B	C	D	F	G	H	J	N	P	R	S	T	X	Y	Z	AA
IN.	43	20	17	9	1 1/4	1 1/4	12 1/2	5 1/4	12 1/2	9 1/4	2 1/2	3 1/2	4 1/2	3 3/16	3 1/2	1 1/2	0
CM.	109	51	43	23	3	3	32	13	32	25	6	8	11	8	9	4	0

FILTER SIZE 16"x22 1/4"x1" SHIPPING WGT. 180 lbs.  
41x56,5x2,5 cm. 81 kg.

Continuing engineering research results in steady improvements. Therefore, these ratings and specifications are subject to change without notice. No one is authorized to reproduce or alter this document in any way without the written authorization of an officer of the company.



# 804 SERIES HORIZONTAL WATER SOURCE HEAT PUMP SIZE: 025



## ClimateMaster

A COMBINATION OF CHP CORP. AND  
FRIEDRICH™ CLIMATE MASTER, INC.

**TAG:** \_\_\_\_\_

JOB SCHEDULE	TOTAL BTUH	INPUT WATTS	SENSIBLE BTUH	BTUH HEAT OF ABS./REJ.	EER COP	GPM	EWT	LWT	EAT	PRESSURE DROP IN FEET
COOLING										
HEATING										

ELECTRICAL DATA		BLOWER	COMPRESSOR		MIN CKT AMPACITY	MAX, FUSE OR HACR SIZE
VOLTAGE	PHASE	FLA	RLA	LRA		
208/230	1	1.6	11.8	54.0	16.4	25
265	1	1.5	9.3	45.0	14.4	20

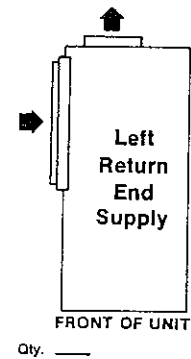
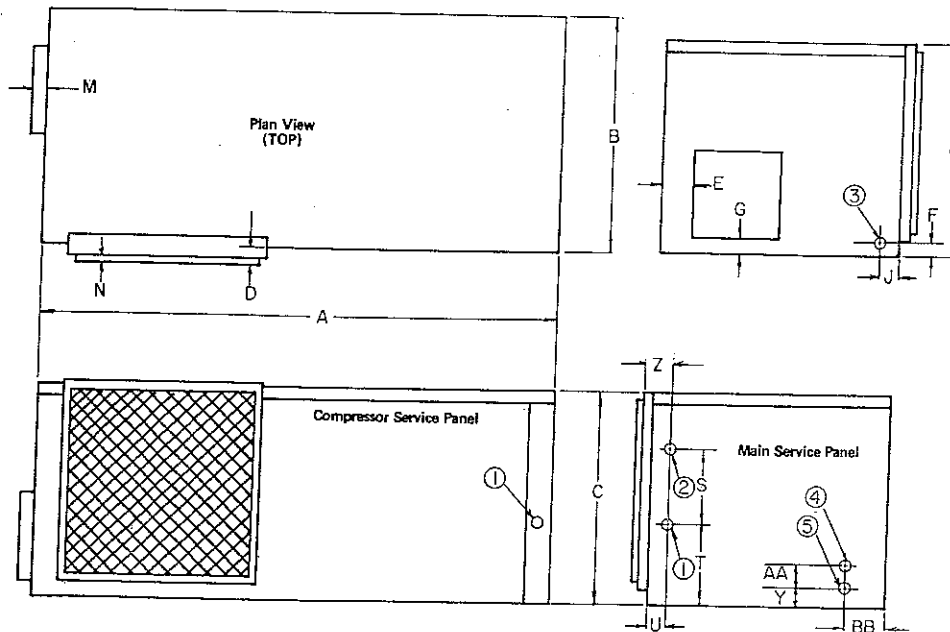
  

BLOWER PERFORMANCE			INSTALLED WEIGHT		
EXT. STATIC PRES. I.W.G.				lbs.	
CFM				kg.	

### DIMENSIONS

### AIR FLOW PATTERNS

- |                  | IN.         | CM.     |      |
|------------------|-------------|---------|------|
| 1 - High Voltage | 7/8"-1 1/8" | 2,2-2,9 | Dia. |
| 2 - Low Voltage  | 1/2"        | 1,3     | Dia. |
| 3 - Cond. Drain  | 3/4"        | 1,9     | FPT. |
| 4 - Water Out    | 3/4"        | 1,9     | FPT  |
| 5 - Water In     | 3/4"        | 1,9     | FPT  |

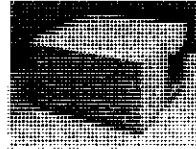


SZ	A	B	C	D	F	J	L	M	N	S	T	U	X	Y	Z	AA	BB
IN.	43	20	19	1 1/4	1 1/4	5 1/2	2 1/2	1	1/2	6	7 1/4	1	1 1/4	2 1/2	1 1/2	2 1/2	4 1/2
CM.	109	51	48	4	3	13	7	2,5	1	15	20	2,5	3	6	4	6	10

FILTER SIZE 18"x22 1/2"x1" SHIPPING WGT. 213 lbs.  
46x56,5x2,5 cm. 96 kg.

Continuing engineering research results in steady improvements. Therefore, these ratings and specifications are subject to change without notice. No one is authorized to reproduce or alter this document in any way without the written authorization of an officer of the company.

**804 SERIES  
HORIZONTAL WATER SOURCE  
HEAT PUMP  
SIZE: 025**



**ClimateMaster**  
A COMBINATION OF CHP CORP. AND  
FRIEDRICH™ CLIMATE MASTER, INC.

**TAG:** \_\_\_\_\_

JOB SCHEDULE	TOTAL BTUH	INPUT WATTS	SENSIBLE BTUH	BTUH HEAT OF ABS./REJ.	EER COP	GPM	EWT	LWT	EAT	PRESSURE DROP IN FEET
COOLING										
HEATING										

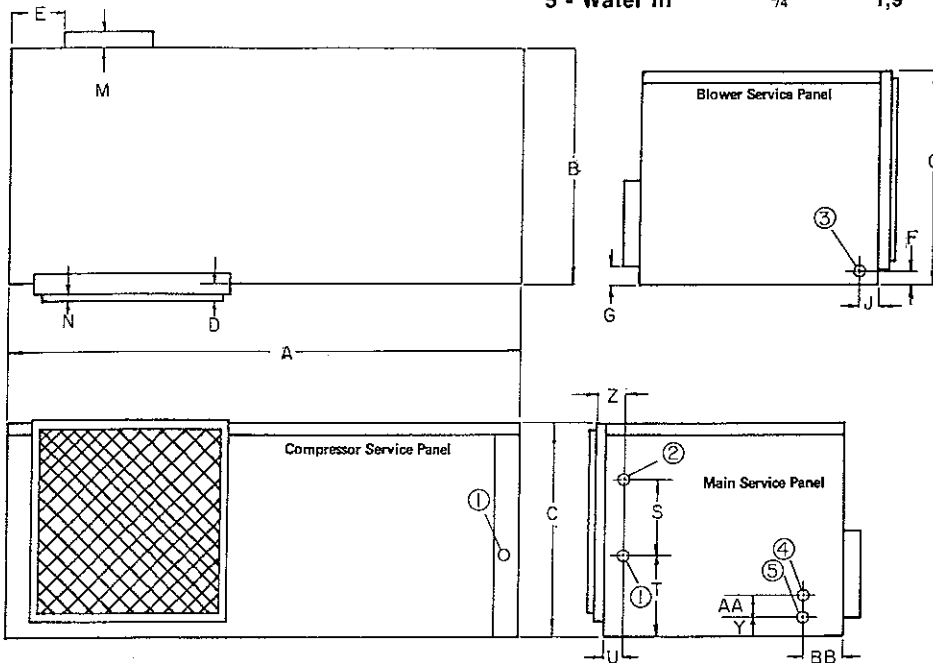
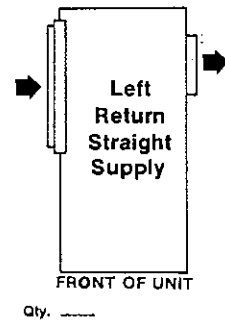
ELECTRICAL DATA		BLOWER	COMPRESSOR		MIN CKT AMPACITY	MAX, FUSE OR HACR SIZE
VOLTAGE	PHASE	FLA	RLA	LRA		
208/230	1	1.6	11.8	54.0	16.4	25
265	1	1.5	9.3	45.0	14.4	20

BLOWER PERFORMANCE			INSTALLED WEIGHT	
EXT. STATIC PRES. I.W.G.			lbs.	
CFM			kg.	

**DIMENSIONS**

**AIR FLOW PATTERNS**

- |                  | IN.           | CM.     |      |
|------------------|---------------|---------|------|
| 1 - High Voltage | 7/8" - 1 1/8" | 2,2-2,9 | Dia. |
| 2 - Low Voltage  | 1/2"          | 1,3     | Dia. |
| 3 - Cond. Drain  | 3/4"          | 1,9     | FPT  |
| 4 - Water Out    | 3/4"          | 1,9     | FPT  |
| 5 - Water In     | 3/4"          | 1,9     | FPT  |



SZ.	A	B	C	D	E	F	G	J	M	N	S	T	U	Y	Z	AA	BB
IN.	43	20	19	1 1/4		1 1/2		5 1/2	1	1/2	6	7 1/4	1 1/4	2 1/2	1 1/2	2 1/2	4 1/2
CM.	109	51	48	4		3		13	2,5	1	15	20	3	6	4	6	10

FILTER SIZE 18"x22 1/4"x1" SHIPPING WGT. 213 lbs.  
46x56,5x2,5 cm. 96 kg.

**804 SERIES  
HORIZONTAL WATER SOURCE  
HEAT PUMP  
SIZE: 025**



**ClimateMaster**

A COMBINATION OF CHP CORP. AND  
FRIEDRICH™ CLIMATE MASTER, INC.

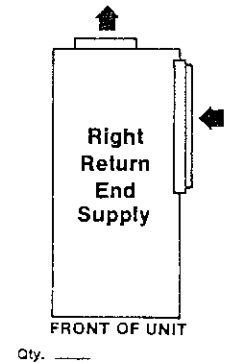
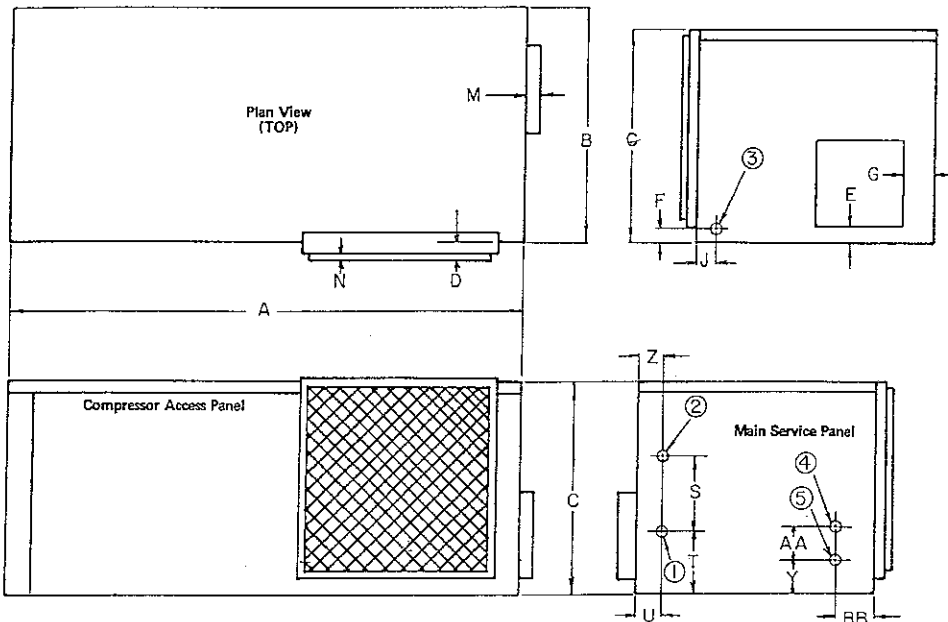
**TAG:** \_\_\_\_\_

JOB SCHEDULE	TOTAL BTUH	INPUT WATTS	SENSIBLE BTUH	BTUH HEAT OF ABS./REJ.	EER COP	GPM	EWT	LWT	EAT	PRESSURE DROP IN FEET
COOLING										
HEATING										
ELECTRICAL DATA		BLOWER		COMPRESSOR		MIN CKT AMPACITY		MAX. FUSE OR HACR SIZE		
VOLTAGE	PHASE	FLA	FLA	LRA	LRA					
208/230	1	1.6	11.8	54.0	54.0	16.4		25		
265	1	1.5	9.3	45.0	45.0	14.4		20		
BLOWER PERFORMANCE						INSTALLED WEIGHT				
EXT. STATIC PRES. I.W.G.						lbs.				
CFM						kg.				

**DIMENSIONS**

**AIR FLOW PATTERNS**

- |                  | IN.         | CM.     |      |
|------------------|-------------|---------|------|
| 1 - High Voltage | 7/8"-1 1/8" | 2,2-2,9 | Dia. |
| 2 - Low Voltage  | 1/2"        | 1,3     | Dia. |
| 3 - Cond. Drain  | 3/4"        | 1,9     | FPT  |
| 4 - Water Out    | 3/4"        | 1,9     | FPT  |
| 5 - Water In     | 3/4"        | 1,9     | FPT  |



SZ.	A	B	C	D	E	F	G	J	M	N	S	T	U	Y	Z	AA	BB
IN.	43	20	19	1 3/4	1 1/8	1 1/4	2 3/8	5 1/4	1	1/2	6	7 3/4	1	2 1/4	1 1/4	2 1/4	4 1/4
CM.	109	51	48	4	3	3	7	13	2,5	1	15	20	2,5	6	4	6	10

FILTER SIZE 18"x22 1/4"x1" SHIPPING WGT. 213 lbs.  
46x56,5x2,5 cm. 96 kg.

Continuing engineering research results in steady improvements. Therefore, these ratings and specifications are subject to change without notice. No one is authorized to reproduce or alter this document in any way without the written authorization of an officer of the company.

**804 SERIES  
HORIZONTAL WATER SOURCE  
HEAT PUMP  
SIZE: 025**



**ClimateMaster**

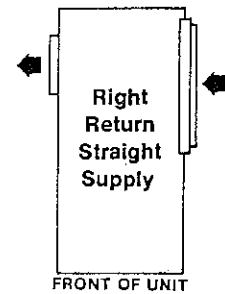
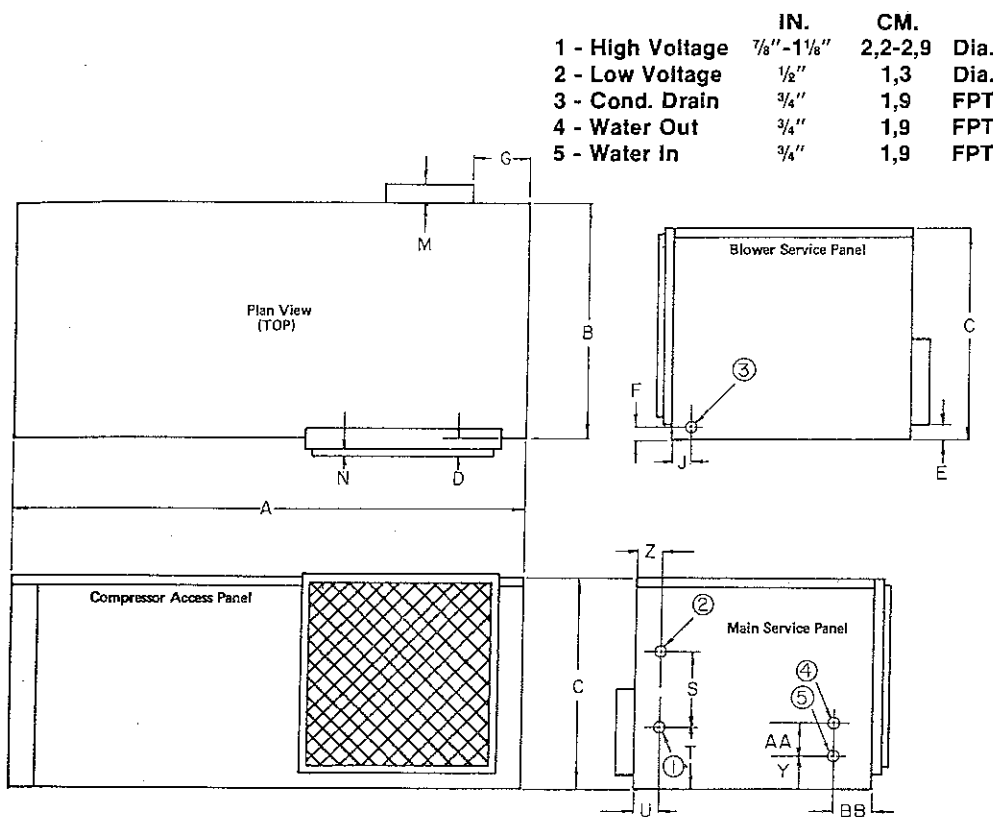
A COMBINATION OF CHP CORP. AND  
FRIEDRICH™ CLIMATE MASTER, INC.

**TAG:** \_\_\_\_\_

JOB SCHEDULE	TOTAL BTUH	INPUT WATTS	SENSIBLE BTUH	BTUH HEAT OF ABS./REJ.	EER COP	GPM	EWT	LWT	EAT	PRESSURE DROP IN FEET
COOLING										
HEATING										
ELECTRICAL DATA		BLOWER		COMPRESSOR		MIN CKT AMPACITY		MAX, FUSE OR HACR SIZE		
VOLTAGE	PHASE	FLA	RLA	LRA						
208/230	1	1.6	11.8	54.0	16.4		25			
265	1	1.5	9.3	45.0	14.4		20			
BLOWER PERFORMANCE						INSTALLED WEIGHT				
EXT. STATIC PRES. I.W.G.						lbs.				
CFM						kg.				

**DIMENSIONS**

**AIR FLOW PATTERNS**



Qty. \_\_\_\_\_

SZ.	A	B	C	D	F	G	J	M	N	S	T	U	Y	Z	AA	BB
IN.	43	20	19	1 3/4	1 1/4	2 1/2	5 1/2	1	1/2	6	7 1/4	1 1/4	2 1/2	1 1/2	2 1/2	4
CM.	109	51	48	4	3	7	13	2,5	1	15	20	3	6	4	6	10

FILTER SIZE	18"x22 1/4"x1"	SHIPPING WGT.	213 lbs.
	46x56,5x2,5 cm.		96 kg.

Continuing engineering research results in steady improvements. Therefore, these ratings and specifications are subject to change without notice. No one is authorized to reproduce or alter this document in any way without the written authorization of an officer of the company.

**804 SERIES  
HORIZONTAL WATER SOURCE  
HEAT PUMP  
SIZE: 031**



**ClimateMaster**  
A COMBINATION OF CHP CORP. AND  
FRIEDRICH™ CLIMATE MASTER, INC.

**TAG:** \_\_\_\_\_

JOB SCHEDULE	TOTAL BTUH	INPUT WATTS	SENSIBLE BTUH	BTUH HEAT OF ABS./REJ.	EER COP	GPM	EWT	LWT	EAT	PRESSURE DROP IN FEET
COOLING										
HEATING										

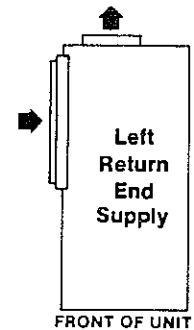
ELECTRICAL DATA		BLOWER	COMPRESSOR		MIN CKT AMPACITY	MAX. FUSE OR HACR SIZE
VOLTAGE	PHASE	FLA	RLA	LRA		
208/230	1	2.0	14.0	65.0	19.5	30
265	1	1.6	11.2	55.0	17.2	25
208/230	3	2.0	9.2	60.0	13.9	20
460	3	1.0	4.4	28.0	6.5	15

BLOWER PERFORMANCE		INSTALLED WEIGHT	
EXT. STATIC PRES. I.W.G.		lbs.	
CFM		kg.	

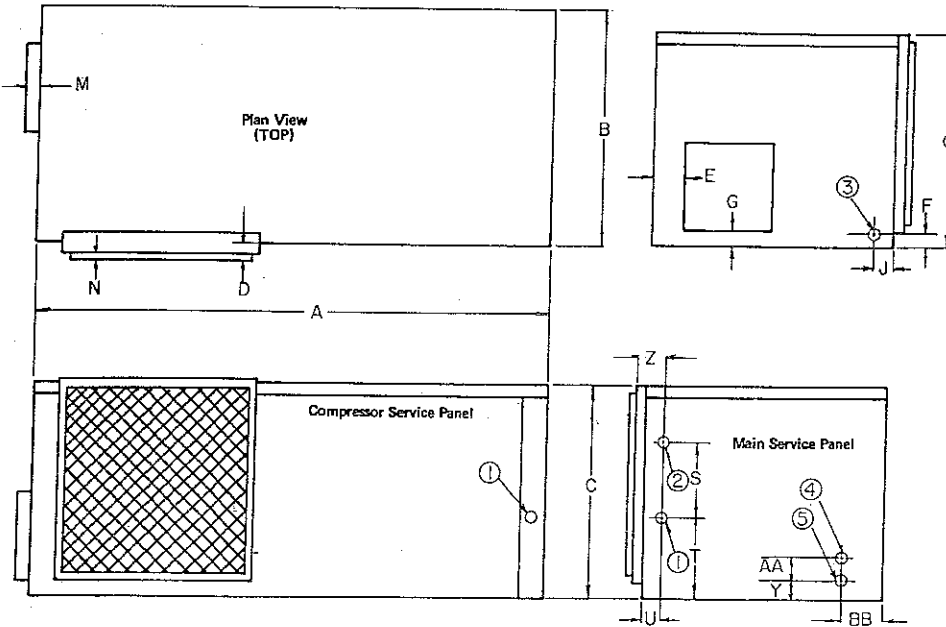
**DIMENSIONS**

**AIR FLOW PATTERNS**

- |                  | IN.           | CM.     |      |
|------------------|---------------|---------|------|
| 1 - High Voltage | 7/8" - 1 1/8" | 2,2-2,9 | Dia. |
| 2 - Low Voltage  | 1/2"          | 1,3     | Dia. |
| 3 - Cond. Drain  | 3/4"          | 1,9     | FPT  |
| 4 - Water Out    | 3/4"          | 1,9     | FPT  |
| 5 - Water In     | 3/4"          | 1,9     | FPT  |



Qty. \_\_\_\_\_



SZ.	A	B	C	D	F	J	L	M	N	S	T	U	X	Y	Z	AA	BB
IN.	43	20	19	1 1/4	1 1/4	5 1/2	2 1/2	1	1 1/2	6	7 3/4	1	1 1/4	2 1/2	1 1/2	2 1/2	4 1/4
CM.	109	51	48	4	3	13	7	2,5	1	15	20	2,5	3	6	4	6	10

FILTER SIZE	18"x22 1/4"x1"	SHIPPING WGT.	225 lbs.
	46x56,5x2,5 cm.		101 kg.

**804 SERIES  
HORIZONTAL WATER SOURCE  
HEAT PUMP  
SIZE: 031**



**ClimateMaster**  
A SUBSIDIARY OF C-P CORP. AND  
PREDICT-IT CLIMATE MASTER, INC.

**TAG:** \_\_\_\_\_

JOB SCHEDULE	TOTAL BTUH	INPUT WATTS	SENSIBLE BTUH	BTUH HEAT OF ABS./REJ.	EER COP	GPM	EWT	LWT	EAT	PRESSURE DROP IN FEET
COOLING										
HEATING										

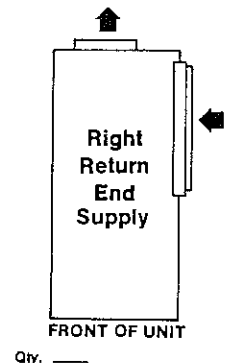
ELECTRICAL DATA		BLOWER	COMPRESSOR		MIN CKT AMPACITY	MAX. FUSE OR HACR SIZE
VOLTAGE	PHASE	FLA	RLA	LRA		
208/230	1	2.0	14.0	65.0	19.5	30
265	1	1.6	11.2	55.0	17.2	25
208/230	3	2.0	9.2	60.0	13.9	20
460	3	1.0	4.4	28.0	6.5	15

BLOWER PERFORMANCE			INSTALLED WEIGHT		
EXT. STATIC PRES. I.W.G.			lbs.		
CFM			kg.		

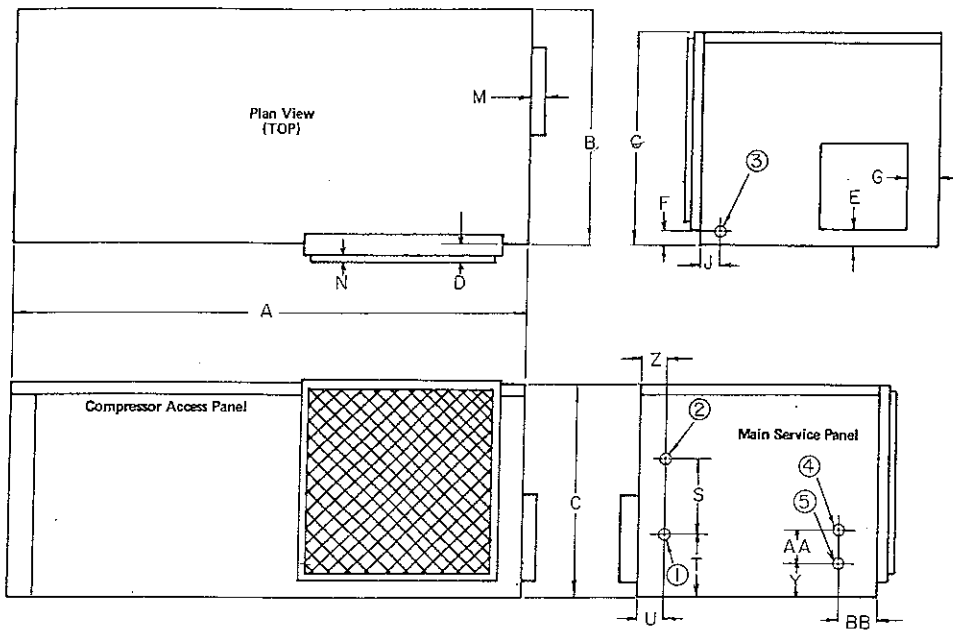
**DIMENSIONS**

**AIR FLOW PATTERNS**

- |                  | IN.           | CM.     |      |
|------------------|---------------|---------|------|
| 1 - High Voltage | 7/8" - 1 1/8" | 2,2-2,9 | Dia. |
| 2 - Low Voltage  | 1/2"          | 1,3     | Dia. |
| 3 - Cond. Drain  | 3/4"          | 1,9     | FPT  |
| 4 - Water Out    | 3/4"          | 1,9     | FPT  |
| 5 - Water In     | 3/4"          | 1,9     | FPT  |



Qty. \_\_\_\_\_



SZ	A	B	C	D	E	F	G	J	M	N	S	T	U	Y	Z	AA	BB
IN.	43	20	19	1 1/4	1 1/8	1 1/8	2 3/8	5 1/2	1	1/2	6	7 3/4	1	2 1/4	1 1/2	2 1/2	4 1/4
CM.	109	51	48	4	3	3	7	13	2,5	1	15	20	2,5	6	4	6	10

FILTER SIZE	18"x22 1/4"x1"	SHIPPING WGT.	225 lbs.
	46x56,5x2,5 cm.		101 kg.

Continuing engineering research results in steady improvements. Therefore, these ratings and specifications are subject to change without notice. No one is authorized to reproduce or alter this document in any way without the written authorization of an officer of the company.

# 804 SERIES HORIZONTAL WATER SOURCE HEAT PUMP SIZE: 037



## ClimateMaster

A COMBINATION OF CHP CORP. AND  
FRIEDRICH\*\* CLIMATE MASTER, INC.

**TAG:** \_\_\_\_\_

JOB SCHEDULE	TOTAL BTUH	INPUT WATTS	SENSIBLE BTUH	BTUH HEAT OF ABS./REJ.	EER COP	GPM	EWT	LWT	EAT	PRESSURE DROP IN FEET
COOLING										
HEATING										

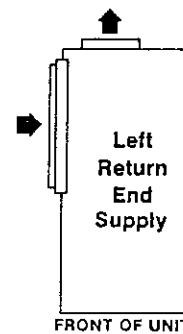
ELECTRICAL DATA		BLOWER	COMPRESSOR		MIN CKT AMPACITY	MAX. FUSE OR HACR SIZE
VOLTAGE	PHASE	FLA	RLA	LRA		
208/230	1	3.2	15.8	75.8	23.0	35
265	1	3.2	13.5	70.0	21.6	35
208/230	3	3.2	10.4	65.0	16.7	25
460	3	1.8	5.2	32.0	8.3	15

BLOWER PERFORMANCE		INSTALLED WEIGHT	
EXT. STATIC PRES. I.W.G.		lbs.	
CFM		kg.	

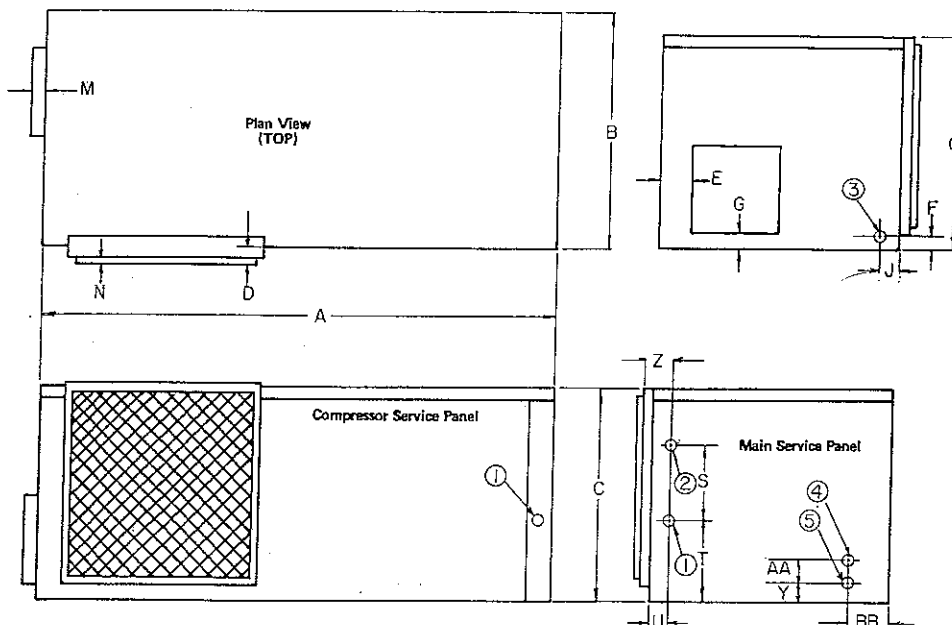
### DIMENSIONS

### AIR FLOW PATTERNS

- |                  | IN.           | CM.     |      |
|------------------|---------------|---------|------|
| 1 - High Voltage | 7/8" - 1 1/8" | 2,2-2,9 | Dia. |
| 2 - Low Voltage  | 1/2"          | 1,3     | Dia. |
| 3 - Cond. Drain  | 3/4"          | 1,9     | FPT  |
| 4 - Water Out    | 3/4"          | 1,9     | FPT  |
| 5 - Water In     | 3/4"          | 1,9     | FPT  |



Qty. \_\_\_\_\_



SZ	A	B	C	D	F	J	L	M	N	S	T	U	X	Y	Z	AA	BB
IN.	47	20	21	1 1/2	1 1/4	5	4	1	1/2	6	7 3/4	1	2 1/8	2 1/2	1 1/2	2 1/2	5 1/4
CM.	119	51	53	4	3	13	10	2,5	1	15	20	2,5	5	6	4	6	13

FILTER SIZE	20"x25"x1"	SHIPPING WGT.	235 lbs.
	51x63,5x2,5 cm.		106 kg.

Continuing engineering research results in steady improvements. Therefore, these ratings and specifications are subject to change without notice. No one is authorized to reproduce or alter this document in any way without the written authorization of an officer of the company.

# 804 SERIES HORIZONTAL WATER SOURCE HEAT PUMP SIZE: 037



## ClimateMaster

A COMBINATION OF CHP CORP. AND  
FRIEDRICH™ CLIMATE MASTER, INC.

**TAG:** \_\_\_\_\_

JOB SCHEDULE	TOTAL BTUH	INPUT WATTS	SENSIBLE BTUH	BTUH HEAT OF ABS./REJ.	EER COP	GPM	EWT	LWT	EAT	PRESSURE DROP IN FEET
COOLING										
HEATING										

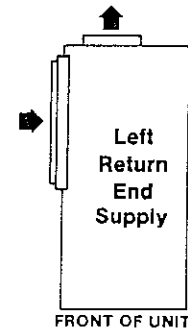
ELECTRICAL DATA		BLOWER	COMPRESSOR		MIN CKT AMPACITY	MAX. FUSE OR HACR SIZE
VOLTAGE	PHASE	FLA	RLA	LRA		
208/230	1	3.2	15.8	75.8	23.0	35
265	1	3.2	13.5	70.0	21.6	35
208/230	3	3.2	10.4	65.0	16.7	25
460	3	1.8	5.2	32.0	8.3	15

BLOWER PERFORMANCE		INSTALLED WEIGHT	
EXT. STATIC PRES. I.W.G.		lbs.	
CFM		kg.	

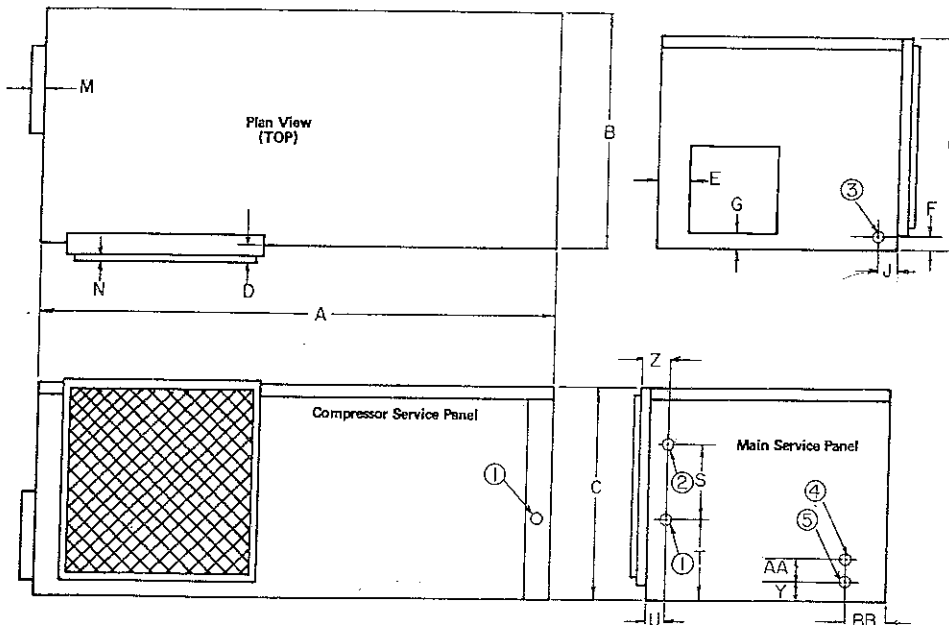
### DIMENSIONS

### AIR FLOW PATTERNS

- |                  | IN.           | CM.     |      |
|------------------|---------------|---------|------|
| 1 - High Voltage | 7/8" - 1 1/8" | 2,2-2,9 | Dia. |
| 2 - Low Voltage  | 1/2"          | 1,3     | Dia. |
| 3 - Cond. Drain  | 3/4"          | 1,9     | FPT  |
| 4 - Water Out    | 3/4"          | 1,9     | FPT  |
| 5 - Water In     | 3/4"          | 1,9     | FPT  |



Qty. \_\_\_\_\_



SZ	A	B	C	D	F	J	L	M	N	S	T	U	X	Y	Z	AA	BB
IN.	47	20	21	1 1/4	1 1/4	5	4	1	1/4	6	7 1/4	1	2 1/4	2 1/2	1 1/2	2 1/2	5 1/4
CM.	119	51	53	4	3	13	10	2.5	1	15	20	2.5	5	6	4	6	13

FILTER SIZE	20"x25"x1"	SHIPPING WGT.	235 lbs.
	51x63,5x2,5 cm.		106 kg.

Continuing engineering research results in steady improvements. Therefore, these ratings and specifications are subject to change without notice. No one is authorized to reproduce or alter this document in any way without the written authorization of an officer of the company.