

**801 SERIES  
WATER SOURCE  
HEAT PUMP CONSOLE  
SIZE: 08 (48") R.H. PIPING**



**ClimateMaster**  
A COMBINATION OF CHP CORP. AND  
FRIEDRICH™ CLIMATE MASTER, INC.

**TAG:**

JOB SCHEDULE:	TOTAL BTUH	INPUT WATTS	SENSIBLE BTUH	BTUH HEAT OF ABS./REJ.	EER COP	GPM	EWI	LWT	EAT	PRESSURE DROP IN FEET
COOLING										
HEATING										

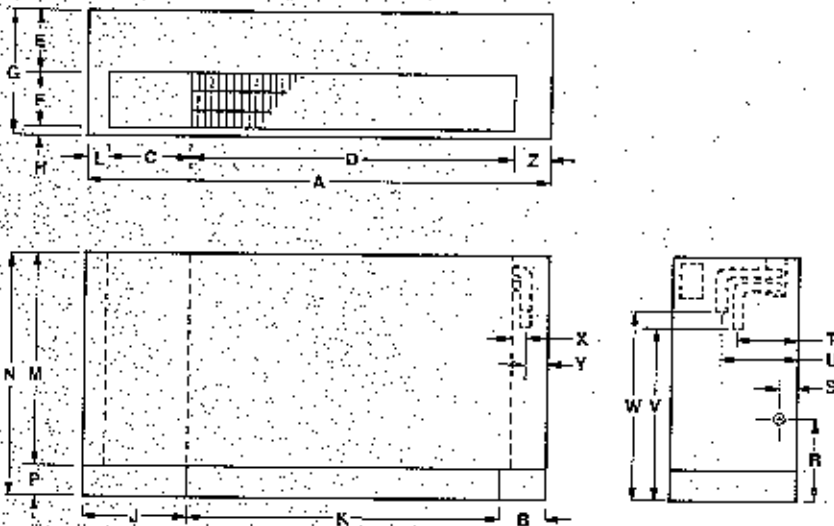
ELECTRICAL DATA		BLOWER	COMPRESSOR		MIN. OKT AMPACITY	MAX. FUSE OR HACR SIZE
VOLTAGE	PHASE	FLA	RLA	LRA		
208/230	1	.45	3.5	22.4	4.82	15
265	1	.45	3.0	19.0	4.20	15

BLOWER PERFORMANCE		INSTALLED WEIGHT	
EXT. STATIC PRES. I.W.G.		lbs.	
CFM		kg.	

**DIMENSIONS**

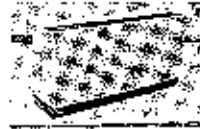
**AIR FLOW PATTERNS**



Item	48" Cabinet	Item	48" Cabinet	Item	48" Cabinet
A	48" (122.0)	J	1 1/2" (39.2)	T	5 1/2" (14.0)
B	5 1/2" (14.3)	K	20 3/4" (53.2)	U	7" (17.8)
C	9 1/2" (24.1)	L	2" (5.1)	V	17" (43.2)
D	31" (78.7)	M	20 3/4" (53.2)	W	18" (45.7)
E	6 3/4" (17.1)	N	24" (61.0)	X	1 1/2" (3.8)
F	5 1/2" (14.0)	P	3 1/2" (9.0)	Y	3 1/2" (8.8)
G	12 1/2" (31.8)	R	7 1/4" (18.5)	Z	4 3/4" (12.1)
H	1/2" (1.3)	S	1 1/2" (4.0)		

FILTER SIZE	SHIPPING WGT. 178 lbs. 80 kg.
-------------	----------------------------------

**801 SERIES  
WATER SOURCE  
HEAT PUMP CONSOLE  
SIZE: 08 (52") R.H. PIPING**



**ClimateMaster**  
A COMBINATION OF CHP CORP. AND  
FRIEDRICH™ CLIMATE MASTER, INC.

**TAG:**

JOB SCHEDULE	TOTAL BTUH	INPUT WATTS	SENSIBLE BTUH	BTUH HEAT OF ABS./REJ.	EER COP	GPM	EWT	LWT	EAT	PRESSURE DROP IN FEET
COOLING										
HEATING										

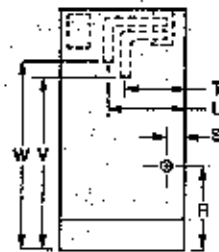
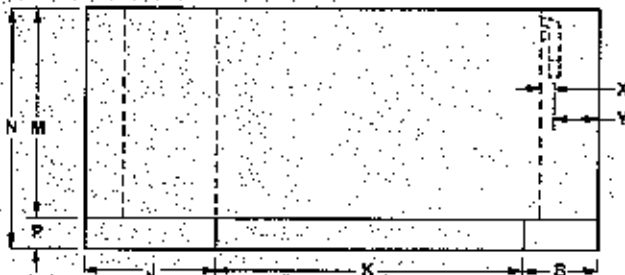
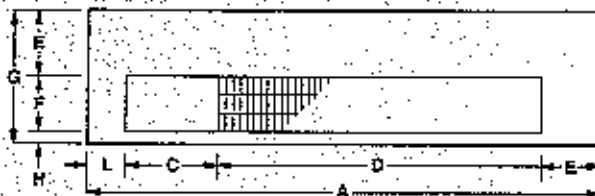
ELECTRICAL DATA		BLOWER	COMPRESSOR		MIN CKT AMPACITY	MAX. FUSE OR HACR SIZE
VOLTAGE	PHASE	FLA	RLA	LRA		
208/230	T	.45	3.5	22.4	4.82	15
265	T	.45	3.0	19.0	4.20	15

BLOWER PERFORMANCE			INSTALLED WEIGHT		
EXT. STATIC PRES. I.W.G.			lbs.		
CFM			kg.		

**DIMENSIONS**

**AIR FLOW PATTERNS**



Item	52" Cabinet	Item	52" Cabinet	Item	52" Cabinet
A	52" (132.1)	J	43 1/2" (110.3)	T	5 1/2" (14.0)
B	7 1/2" (19.0)	K	30 1/2" (77.4)	U	7" (17.8)
C	9 1/2" (24.1)	L	4" (10.2)	V	17" (43.2)
D	31" (78.7)	M	20 1/4" (51.8)	W	18" (45.7)
E	6 1/2" (16.5)	N	24" (61.0)	X	1 1/2" (3.8)
F	5 1/2" (14.0)	P	3 1/2" (9.1)	Y	5 1/2" (14.0)
G	12 1/2" (31.8)	R	7 1/4" (18.4)		
H	1/2" (1.3)	S	1 1/2" (3.8)		

FILTER SIZE	SHIPPING WGT. 178 lbs. 80 kg.
-------------	----------------------------------

Continuing engineering research results in steady improvements. Therefore, these ratings and specifications are subject to change without notice. No one is authorized to reproduce or alter this document in any way without the written authorization of an officer of the company.

**801 SERIES  
WATER SOURCE  
HEAT PUMP CONSOLE  
SIZE: 10 (48") R.H. PIPING**



**ClimateMaster**

A COMBINATION OF CHP CORP AND  
FRIEDRICH™ CLIMATE MASTER, INC.

**TAG:** \_\_\_\_\_

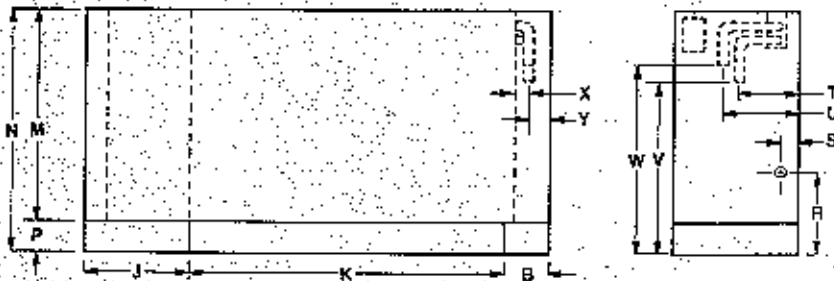
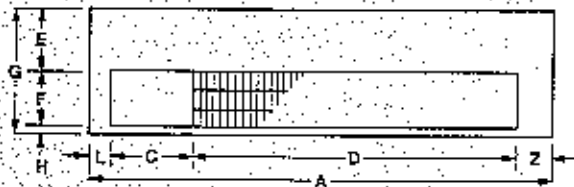
JOB SCHEDULE	TOTAL BTUH	INPUT WATTS	SENSIBLE BTUH	STUH HEAT OF ABS./REJ.	EER COP	GPM	EWT	LWT	EAT	PRESSURE DROP IN FEET
COOLING										
HEATING										

ELECTRICAL DATA		BLOWER	COMPRESSOR		MIN CKT AMPACITY	MAX. FUSE OR HACR SIZE
VOLTAGE	PHASE	FLA	RLA	LRA		
208/230	1	.45	4.4	21.3	5.95	15
265	1	.45	3.9	22.3	5.32	15

BLOWER PERFORMANCE		INSTALLED WEIGHT	
EXT. STATIC PRES. I.W.G.		lbs.	
GPM		kg.	

**DIMENSIONS**

**AIR FLOW PATTERNS**



Item	48" Cabinet	Item	48" Cabinet	Item	48" Cabinet
A	48" (122,0)	J	15 1/4" (38,4)	T	5 1/2" (14,0)
B	54" (14,3)	K	30 1/4" (76,4)	U	7" (17,8)
C	9 1/2" (24,1)	L	2" (5,1)	V	17" (43,2)
D	31" (78,7)	M	20 1/4" (51,8)	W	18" (45,7)
E	6 1/4" (16,3)	N	24" (61,0)	X	1 1/2" (3,8)
F	5 1/8" (14,0)	P	3 1/4" (8,6)	Y	3 1/4" (8,6)
G	12 1/2" (31,8)	R	7 1/4" (18,8)		
H	1/2" (1,3)	S	1 1/4" (4,4)		

FILTER SIZE \_\_\_\_\_

SHIPPING WGT. 180 lbs.  
81 kg.

Continuing engineering research results in steady improvements. Therefore, these ratings and specifications are subject to change without notice. No one is authorized to reproduce or alter this document in any way without the written authorization of an officer of the company.

**801 SERIES  
WATER SOURCE  
HEAT PUMP CONSOLE  
SIZE: 10 (52") R.H. PIPING**



**ClimateMaster**

A COMBINATION OF CHP CORP. AND  
FRIEDRICH™ CLIMATE MASTER, INC.

**TAG:** \_\_\_\_\_

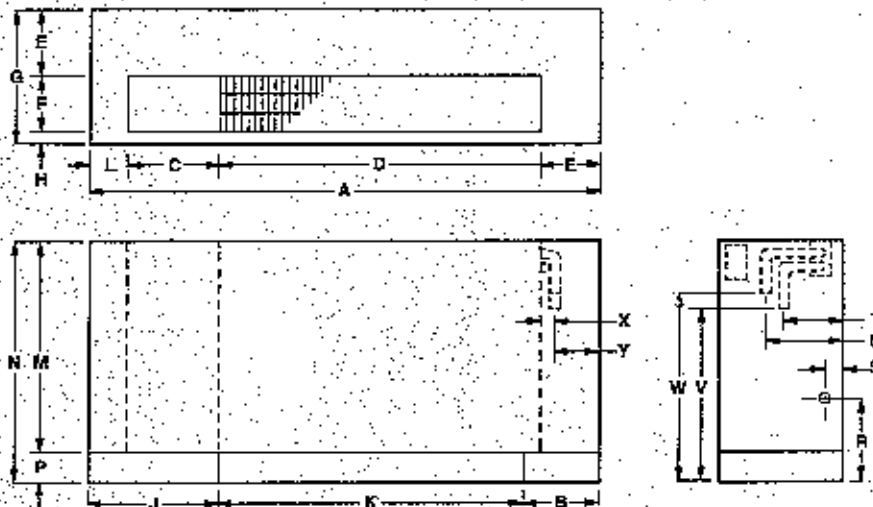
JOB SCHEDULE	TOTAL BTUH	INPUT WATTS	SENSIBLE BTUH	BTUH HEAT OF ABS./REJ.	EER COP	GPM	EWT	LWT	EAT	PRESSURE DROP IN FEET
COOLING										
HEATING										

ELECTRICAL DATA		BLOWER	COMPRESSOR		MIN CKT AMPACITY	MAX. FUSE OR HACR SIZE
VOLTAGE	PHASE	FLA	RLA	LRA		
208/230	1	.45	4.4	21.3	5.95	15
265	1	.45	3.9	22.3	5.32	15

BLOWER PERFORMANCE		INSTALLED WEIGHT	
EXT. STATIC PRES. I.W.G.		lbs.	
CFM		kg.	

**DIMENSIONS**

**AIR FLOW PATTERNS**



Item	52" Cabinet	Item	52" Cabinet	Item	52" Cabinet
A	52" (132.1)	J	13 1/4" (34.3)	T	5 1/2" (14.0)
B	7 1/2" (19.4)	K	30 5/8" (78.4)	U	7" (17.8)
C	9 1/4" (24.1)	L	4" (10.2)	V	17" (43.2)
D	31" (78.7)	M	20 1/4" (53.2)	W	18" (45.7)
E	6 1/2" (17.1)	N	24" (61.0)	X	1 1/2" (3.8)
F	5 1/2" (14.0)	P	3 1/2" (7.8)	Y	5 1/2" (13.6)
G	12 1/4" (31.1)	R	7 1/4" (20.2)		
H	1 1/2" (1.3)	S	1 3/4" (4.4)		

FILTER SIZE	SHIPPING WGT. 180 lbs. 81 kg.
-------------	----------------------------------

Continuing engineering research results in steady improvements. Therefore, these ratings and specifications are subject to change without notice. No one is authorized to reproduce or alter this document in any way without the written authorization of an officer of the company.

**801 SERIES  
WATER SOURCE  
HEAT PUMP CONSOLE  
SIZE: 12 (48") R.H. PIPING**



**ClimateMaster**  
A COMBINATION OF CHP CORP AND  
FRIEDRICH™ CLIMATE MASTER, INC.

**TAG:** \_\_\_\_\_

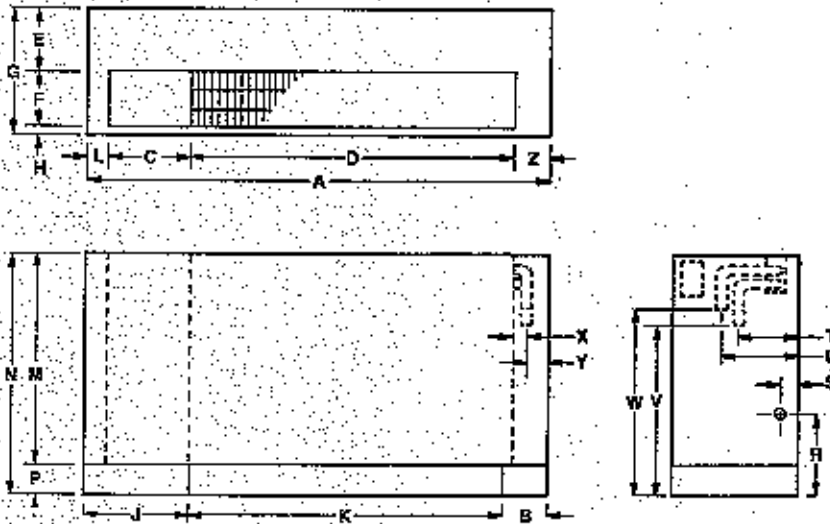
JOB SCHEDULE	TOTAL BTUH	INPUT WATTS	SENSIBLE BTUH	BTUH HEAT OF ABS./REJ.	EER COP	GPM	EWT	LWT	EAT	PRESSURE DROP IN FEET
COOLING										
HEATING										

ELECTRICAL DATA		BLOWER	COMPRESSOR		MIN CKT AMPACITY	MAX. FUSE OR HACR SIZE
VOLTAGE	PHASE	FLA	RLA	LRA		
208/230	1	.45	5.7	28.0	7.58	15
265	1	.45	5.0	27.4	6.70	15

BLOWER PERFORMANCE		INSTALLED WEIGHT	
EXT. STATIC PRES. I.W.G.		lbs.	
CFM		kg.	

**DIMENSIONS**

**AIR FLOW PATTERNS**



Item	48" Cabinet	Item	48" Cabinet	Item	48" Cabinet
A	48" (122.0)	J	11 1/2" (29.2)	T	5 1/4" (14.6)
B	5 1/4" (14.3)	K	30 1/2" (78.4)	U	7" (17.8)
C	9 1/2" (24.1)	L	2" (5.1)	V	17" (43.2)
D	31" (78.7)	M	20 1/4" (51.8)	W	18" (45.7)
E	6 3/4" (17.1)	N	24" (61.0)	X	1 1/2" (3.8)
F	5 1/2" (14.0)	P	3 1/4" (7.9)	Y	3 3/4" (8.6)
G	12 1/4" (31.0)	R	7 1/4" (20.2)	Z	4 1/4" (12.1)
H	3 1/2" (1.3)	S	1 1/2" (4.4)		

FILTER SIZE \_\_\_\_\_

SHIPPING WGT. **195 lbs.**  
**88 kg.**

Continuing engineering research results in steady improvements. Therefore, these ratings and specifications are subject to change without notice. No one is authorized to reproduce or alter this document in any way without the written authorization of an officer of the company.

**801 SERIES  
WATER SOURCE  
HEAT PUMP CONSOLE  
SIZE: 12 (52") R.H. PIPING**



**ClimateMaster**  
A COMBINATION OF CHP CORP. AND  
FRIEDRICH™ CLIMATE MASTER, INC.

**TAG:** \_\_\_\_\_

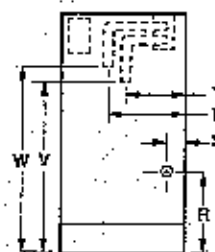
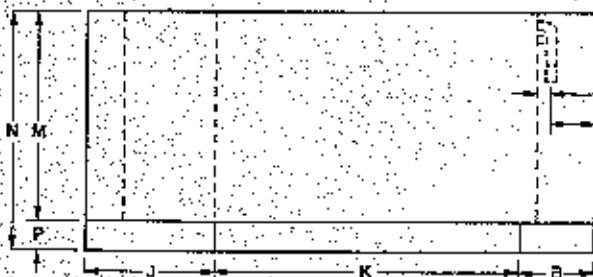
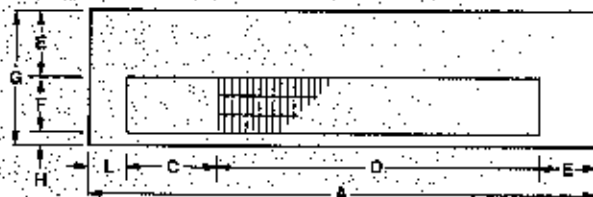
JOB SCHEDULE	TOTAL BTUH	INPUT WATTS	SENSIBLE BTUH	BTUH HEAT OF ABS./REJ.	EER COP	GPM	EWT	LWT	EAT	PRESSURE DROP IN FEET
COOLING										
HEATING										

ELECTRICAL DATA		BLOWER	COMPRESSOR		MIN CKT AMPACITY	MAX. FUSE OR HACR SIZE
VOLTAGE	PHASE	FLA	RLA	LRA		
208/230	1	.45	5.7	28.0	7.58	15
265	1	.45	5.0	27.4	6.70	15

BLOWER PERFORMANCE			INSTALLED WEIGHT		
EXT. STATIC PRES. I.W.G.			lbs.		
CFM			kg.		

**DIMENSIONS**

**AIR FLOW PATTERNS**



Item	52" Cabinet	Item	82" Cabinet	Item	52" Cabinet
A	52" (132,1)	J	53 1/2" (134,3)	T	5 3/4" (14,6)
B	7 5/8" (19,4)	K	30 3/8" (78,4)	U	7" (17,8)
C	9 1/2" (24,1)	L	4" (10,2)	V	17" (43,2)
D	31" (78,7)	M	20 3/16" (53,2)	W	18" (45,7)
E	8 5/8" (22,1)	N	24" (61,0)	X	1 1/2" (3,8)
F	5 1/2" (14,0)	P	3 1/4" (7,6)	Y	5 1/4" (13,6)
G	12 1/4" (31,1)	R	7 1/8" (20,2)		
H	1/4" (1,3)	S	1 3/4" (4,4)		

FILTER SIZE	SHIPPING WGT. 195 lbs. 88 kg.
-------------	----------------------------------

Continuing engineering research results in steady improvements. Therefore, these ratings and specifications are subject to change without notice. No one is authorized to reproduce or alter this document in any way without the written authorization of an officer of the company.

**801 SERIES  
WATER SOURCE  
HEAT PUMP CONSOLE  
SIZE: 15 (52") R.H. PIPING**



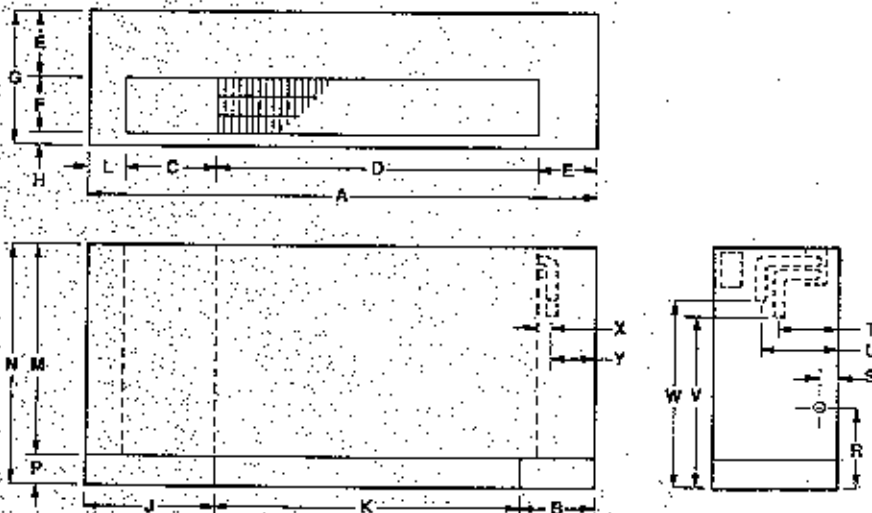
**ClimateMaster**  
A COMBINATION OF CHP CORP AND  
FRIEDRICH™ CLIMATE MASTER, INC.

**TAG:** \_\_\_\_\_

JOB SCHEDULE:	TOTAL BTUH	INPUT WATTS	SENSIBLE BTUH	BTUH HEAT OF ABS./REJ.	EER COP	GPM	EW7	LWT	EAT	PRESSURE DROP IN FEET
COOLING										
HEATING										
ELECTRICAL DATA		BLOWER		COMPRESSOR		MIN CKT AMPACITY		MAX. FUSE OR HACR SIZE		
VOLTAGE	PHASE	FLA	RLA	LRA						
208/230	1	.55	6.20	36.0			8.30			15
265	1	.50	5.40	33.0			7.25			15
BLOWER PERFORMANCE				INSTALLED WEIGHT						
EXT. STATIC PRES. I.W.G.						lbs.				
CFM						kg.				

**DIMENSIONS**

**AIR FLOW PATTERNS**



Item	52" Cabinet	Item	52" Cabinet	Item	52" Cabinet
A	52" (132.1)	J	13 1/8" (34.3)	T	5 1/2" (14.6)
B	7 1/2" (19.4)	K	30 1/2" (78.4)	U	7" (17.8)
C	9 1/2" (24.1)	L	4" (10.2)	V	17" (43.2)
D	31" (78.7)	M	20 1/8" (53.2)	W	18" (45.7)
E	5 1/4" (17.1)	N	24" (61.0)	X	1 1/2" (3.8)
F	5 1/2" (14.0)	P	3 1/2" (7.8)	Y	5 1/4" (13.5)
G	12 1/4" (31.1)	R	7 1/8" (20.2)		
H	1/2" (1.3)	S	1 1/2" (4.4)		

FILTER SIZE \_\_\_\_\_

SHIPPING WGT. 200 lbs.  
90 kg.

Continuing engineering research results in steady improvements. Therefore, these ratings and specifications are subject to change without notice. No one is authorized to reproduce or alter this document in any way without the written authorization of an officer of the company.

**801 SERIES  
WATER SOURCE  
HEAT PUMP CONSOLE**  
SIZE: 19 (52") R.H. PIPING



**ClimateMaster**  
A COMBINATION OF CHP CORP. AND  
FRIEDRICH CLIMATE MASTER, INC.

**TAG:** \_\_\_\_\_

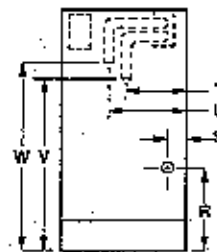
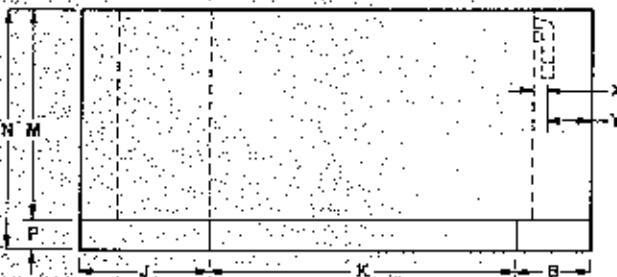
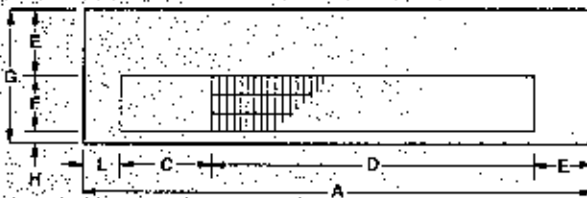
JOB SCHEDULE	TOTAL BTUH	INPUT WATTS	SENSIBLE BTUH	BTUH HEAT OF ABS./REJ.	EER COP	GPM	EWT	LWT	EAT	PRESSURE DROP IN FEET
COOLING										
HEATING										

ELECTRICAL DATA		BLOWER	COMPRESSOR		MIN CKT AMPACITY	MAX. FUSE OR HACR SIZE
VOLTAGE	PHASE	FLA	FLA	LRA		
208/230	1	.55	7.80	40.6	10.30	15
265	1	.50	6.70	34.0	8.87	15

BLOWER PERFORMANCE		INSTALLED WEIGHT	
EXT. STATIC PRES. I.W.G.		lbs.	
CFM		kg.	

**DIMENSIONS**

**AIR FLOW PATTERNS**



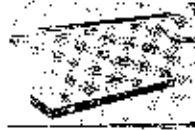
Item	52" Cabinet	Item	52" Cabinet	Item	52" Cabinet
A	50" (132.1)	J	13 1/2" (34.3)	T	5 1/2" (14.6)
B	7 5/8" (19.4)	K	30 3/4" (78.4)	U	7" (17.8)
C	9 3/4" (24.4)	L	4" (10.2)	V	67" (43.2)
D	31" (78.7)	M	20 1/2" (53.2)	W	18" (45.7)
E	6 1/4" (17.1)	N	24" (61.0)	X	1 1/2" (3.8)
F	5 1/2" (14.0)	P	3 1/2" (7.6)	Y	5 3/8" (13.6)
G	12 3/4" (31.1)	R	7 1/4" (20.2)		
H	1/2" (1.3)	S	1 3/4" (4.4)		

FILTER SIZE	SHIPPING WGT. 220 lbs. 99 kg.
-------------	----------------------------------

Continuing engineering research results in steady improvements. Therefore, these ratings and specifications are subject to change without notice. No one is authorized to reproduce or alter this document in any way without the written authorization of an officer of the company.



**801 SERIES  
WATER SOURCE  
HEAT PUMP CONSOLE  
SIZE: 08 (48") L.H. PIPING**



**ClimateMaster**  
A COMBINATION OF CHP CORP. AND  
FRIEDRICH™ CLIMATE MASTER, INC.

**TAG:** \_\_\_\_\_

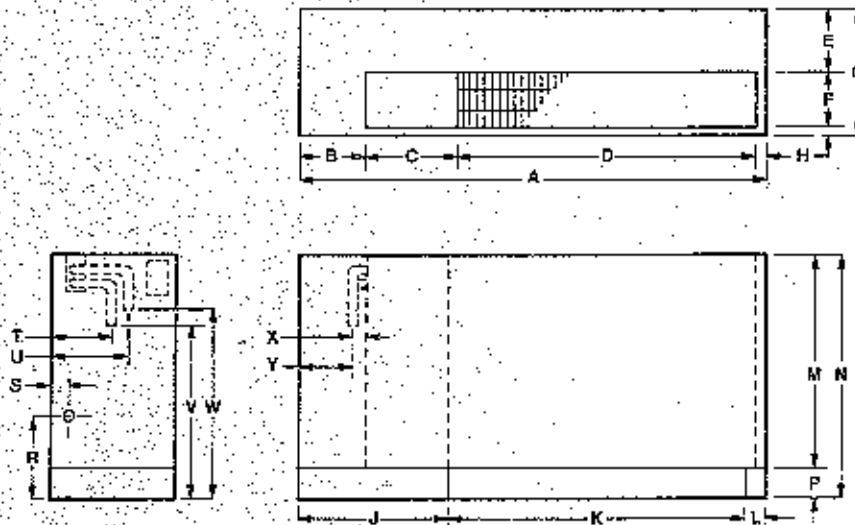
JOB SCHEDULE	TOTAL BTUH	INPUT WATTS	SENSIBLE BTUH	BTUH HEAT OF ABS./REJ.	EER COP	GPM	EWT	LWT	EAT	PRESSURE DROP IN FEET
COOLING										
HEATING										

ELECTRICAL DATA		BLOWER	COMPRESSOR		MIN CKT AMPACITY	MAX. FUSE OR HACR SIZE
VOLTAGE	PHASE	FLA	RLA	LRA		
208/230	1	.45	3.5	22.4	4.82	15
265	1	.45	3.0	19.0	4.20	15

BLOWER PERFORMANCE			INSTALLED WEIGHT	
EXT. STATIC PRES. I.W.G.			lbs.	
CFM			kg.	

**DIMENSIONS**

**AIR FLOW PATTERNS**



Item	48" Cabinet	Item	48" Cabinet	Item	48" Cabinet
A	48" (122.0)	J	15 1/4" (39.4)	T	5 1/4" (14.0)
B	5 1/4" (14.0)	K	30 1/2" (78.4)	U	7" (17.8)
C	5 1/8" (14.1)	L	2" (5.1)	V	17" (43.2)
D	31" (79.7)	M	20 1/4" (52.2)	W	18" (45.7)
E	6 1/4" (17.1)	N	24" (61.0)	X	1 1/8" (3.8)
F	5 1/4" (14.0)	P	3 1/4" (7.8)	Y	3 1/4" (8.5)
G	12 1/2" (31.8)	R	7 1/8" (20.2)		
H	1/2" (1.3)	S	1 1/4" (4.4)		

FILTER SIZE	SHIPPING WGT.	178 lbs. 80 kg.
-------------	---------------	--------------------

Continuing engineering research results in steady improvements. Therefore, these ratings and specifications are subject to change without notice. No one is authorized to reproduce or alter this document in any way without the written authorization of an officer of the company.

**801 SERIES  
WATER SOURCE  
HEAT PUMP CONSOLE**  
SIZE: 08 (52") L.H. PIPING



**ClimateMaster**

A COMBINATION OF CHP CORP AND  
FRIEDRICH™ CLIMATE MASTER, INC.

**TAG:** \_\_\_\_\_

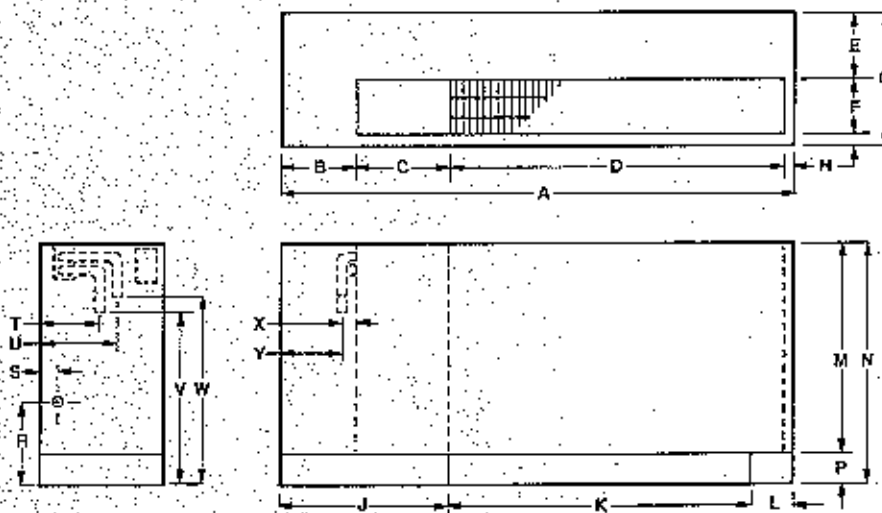
JOB SCHEDULE	TOTAL BTUH	INPUT WATTS	SENSIBLE BTUH	BTUH HEAT OF ABS./REJ.	EER COP	GPM	EWT	LWT	EAT	PRESSURE DROP IN FEET
COOLING										
HEATING										

ELECTRICAL DATA		BLOWER	COMPRESSOR		MIN CKT AMPACITY	MAX. FUSE OR HACR SIZE
VOLTAGE	PHASE	FLA	RLA	LRA		
208/230	1	.45	3.5	22.4	4.82	15
265	1	.45	3.0	19.0	4.20	15

BLOWER PERFORMANCE			INSTALLED WEIGHT		
EXT. STATIC PRES. I.W.G.			lbs.		
CFM			kg.		

**DIMENSIONS**

**AIR FLOW PATTERNS**



Item	52" Cabinet	Item	52" Cabinet	Item	52" Cabinet
A	52" (132.1)	J	17 1/4" (43.5)	T	5 3/4" (14.6)
B	7 3/4" (19.4)	K	30 3/4" (78.4)	U	7" (17.8)
C	9 3/4" (24.1)	L	4" (10.2)	V	17" (43.2)
D	31" (78.7)	M	29 1/4" (52.2)	W	18" (45.7)
E	6 3/4" (17.1)	N	24" (61.0)	X	1 1/2" (3.8)
F	5 1/2" (14.0)	P	3 3/4" (7.8)	Y	5 3/4" (13.6)
G	12 1/4" (31.1)	R	7 1/2" (20.2)		
H	1/2" (1.3)	S	1 3/4" (4.4)		

FILTER SIZE \_\_\_\_\_ SHIPPING WGT. 178 lbs.  
80 kg.

**801 SERIES  
WATER SOURCE  
HEAT PUMP CONSOLE  
SIZE: 10 (48") L.H. PIPING**



**ClimateMaster**

A COMBINATION OF CHP CORP AND  
FRIEDRICH™ CLIMATE MASTER, INC.

**TAG:** \_\_\_\_\_

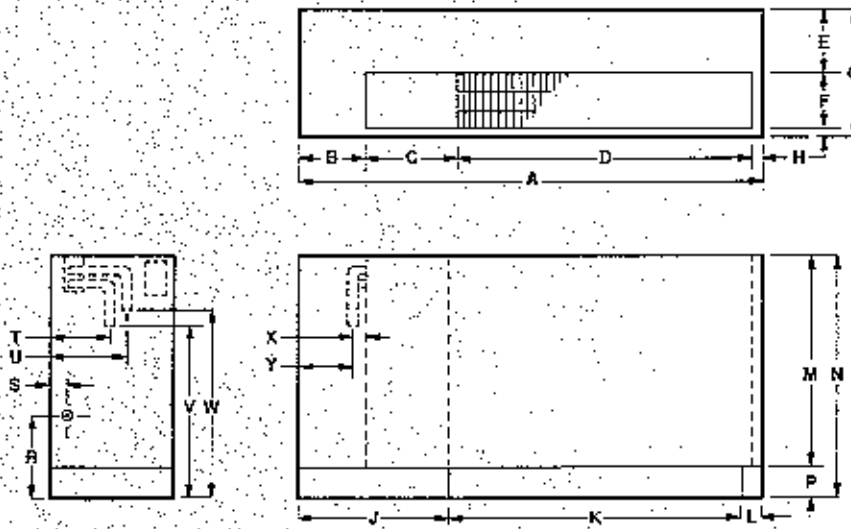
JOB SCHEDULE	TOTAL BTUH	INPUT WATTS	SENSIBLE BTUH	BTUH HEAT OF ABS./REJ.	EER COP	GPM	EWT	LWT	EAT	PRESSURE DROP IN FEET
COOLING										
HEATING										

ELECTRICAL DATA		BLOWER	COMPRESSOR		MIN CKT AMPACITY	MAX. FUSE OR HACR SIZE
VOLTAGE	PHASE	FLA	RLA	LRA		
208/230	1	.45	4.4	21.3	5.95	15
265	1	.45	3.9	22.3	5.32	15

BLOWER PERFORMANCE		INSTALLED WEIGHT	
EXT. STATIC PRES. I.W.G.		lbs.	
CFM		kg.	

**DIMENSIONS**

**AIR FLOW PATTERNS**



Item	48" Cabinet	Item	48" Cabinet	Item	48" Cabinet
A	48" (122,0)	J	1 1/2" (29,2)	T	5 3/4" (14,6)
B	5 3/4" (14,3)	K	30 3/4" (78,4)	U	7" (17,8)
C	9 1/2" (24,1)	L	2" (5,1)	V	17" (43,2)
D	31" (78,7)	M	20 1/4" (51,2)	W	38" (95,7)
E	5 3/4" (14,1)	N	24" (61,0)	X	1 1/2" (3,8)
F	5 1/2" (14,0)	P	3 1/4" (7,8)	Y	3 3/8" (8,6)
G	12 1/4" (31,4)	R	7 1/4" (20,2)	Z	4 3/4" (12,1)
H	16" (41,3)	S	1 3/4" (4,4)		

FILTER SIZE \_\_\_\_\_

SHIPPING WGT. 180 lbs.  
81 kg.

Continuing engineering research results in steady improvements. Therefore, these ratings and specifications are subject to change without notice. No one is authorized to reproduce or alter this document in any way without the written authorization of an officer of the company.

**801 SERIES  
WATER SOURCE  
HEAT PUMP CONSOLE**  
**SIZE: 10 (52") L.H. PIPING**



**ClimateMaster**

A COMBINATION OF CHP CORP. AND  
FRIEDRICH™ CLIMATE MASTER, INC.

**TAG:** \_\_\_\_\_

JOB SCHEDULE	TOTAL BTUH	INPUT WATTS	SENSIBLE BTUH	BTUH HEAT OF ABS./REJ.	EER COP	GPM	EWT	LWT	EAT	PRESSURE DROP IN FEET
COOLING										
HEATING										

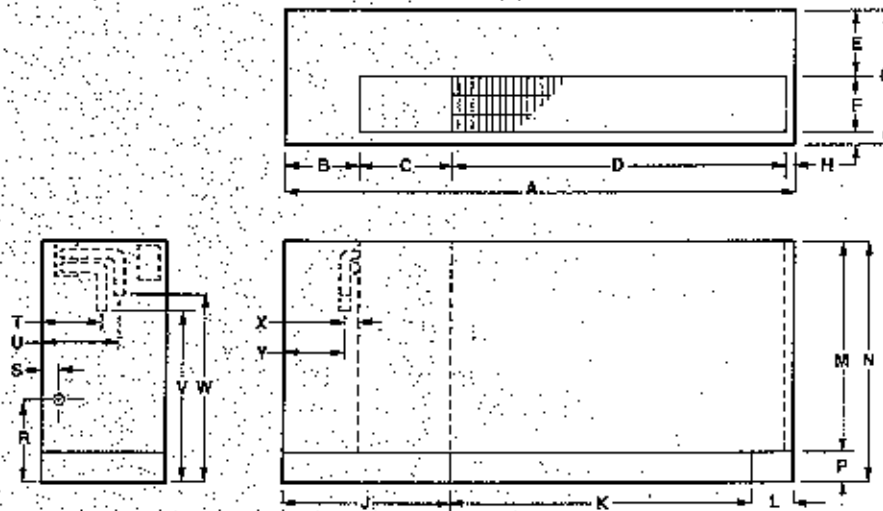
ELECTRICAL DATA		BLOWER	COMPRESSOR		MIN CKT AMPACITY	MAX. FUSE OR HACR SIZE
VOLTAGE	PHASE	FLA	RLA	LRA		
208/230	1	.45	4.4	21.3	5.95	15
265	1	.45	3.9	22.3	5.32	15

BLOWER PERFORMANCE			INSTALLED WEIGHT		
EXT. STATIC PRES. I.W.G.			lbs.		
CFM			kg.		

**DIMENSIONS**

**AIR FLOW PATTERNS**



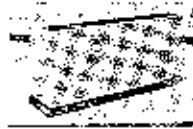
Item	52" Cabinet	Item	62" Cabinet	Item	52" Cabinet
A	52" (132.1)	J	17 1/4" (43.9)	T	5 1/4" (14.0)
B	7 5/8" (19.4)	K	30 7/8" (78.4)	U	7" (17.8)
C	9 1/2" (24.1)	L	4" (10.2)	V	17" (43.2)
D	31" (78.7)	M	20 3/4" (53.2)	W	18" (45.7)
E	8 1/4" (21.1)	N	24" (61.0)	X	1 1/2" (3.8)
F	9 1/4" (24.0)	P	3 1/4" (7.6)	Y	5 1/4" (13.5)
G	12 1/4" (31.1)	R	7 1/4" (18.2)		
H	1 1/2" (3.8)	S	1 1/2" (3.8)		

FILTER SIZE \_\_\_\_\_

SHIPPING WGT. 180 lbs.  
81 kg.

Continuing engineering research results in steady improvements. Therefore, these ratings and specifications are subject to change without notice. No one is authorized to reproduce or alter this document in any way without the written authorization of an officer of the company.

**801 SERIES  
WATER SOURCE  
HEAT PUMP CONSOLE  
SIZE: 12 (48") L.H. PIPING**



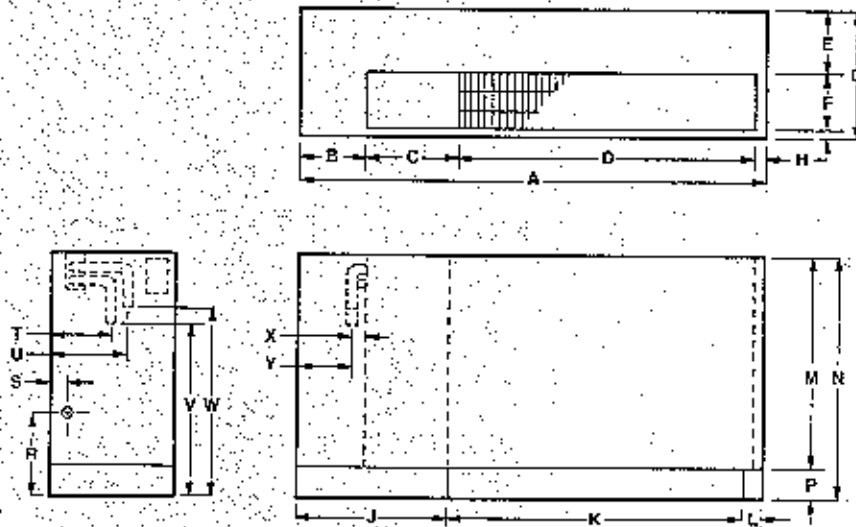
**ClimateMaster**  
A COMBINATION OF CHP CORP. AND  
FRIEDRICH™ CLIMATE MASTER, INC.

**TAG:** \_\_\_\_\_

JOB SCHEDULE	TOTAL BTUH	INPUT WATTS	SENSIBLE BTUH	BTUH HEAT OF ABS./REJ.	EER COP	GPM	EWT	LWT	EAT	PRESSURE DROP IN FEET
COOLING										
HEATING										
ELECTRICAL DATA		BLOWER		COMPRESSOR		MIN. CKT. AMPACITY		MAX. FUSE OR HACR SIZE		
VOLTAGE	PHASE	FLA	RLA	LRA						
208/230	1	.45	5.7	28.0			7.58			15
265	1	.45	5.0	27.4			6.70			15
BLOWER PERFORMANCE						INSTALLED WEIGHT				
EXT. STATIC PRES. I.W.G.						lbs.				
CFM						kg.				

**DIMENSIONS**

**AIR FLOW PATTERNS**



Item	45" Cabinet	Item	48" Cabinet	Item	45" Cabinet
A	48" (122.0)	J	15 1/2" (39.4)	T	5 1/2" (14.0)
B	5 1/2" (14.3)	K	30 1/2" (77.4)	U	7" (17.8)
C	9 1/2" (24.1)	L	2" (5.1)	V	17" (43.2)
D	31" (78.7)	M	20 1/4" (51.8)	W	18" (45.7)
E	8 1/2" (21.6)	X	24" (61.0)	X	1 1/2" (3.8)
F	5 1/2" (14.0)	P	3 1/2" (9.1)	Y	3 3/4" (9.5)
G	12 1/4" (31.0)	R	7 1/4" (18.8)		
H	1/2" (1.3)	S	1 3/4" (4.4)		

FILTER SIZE \_\_\_\_\_ SHIPPING WGT. 195 lbs.  
88 kg.

Continuing engineering research results in steady improvements. Therefore, these ratings and specifications are subject to change without notice. No one is authorized to reproduce or alter this document in any way without the written authorization of an officer of the company.

**801 SERIES  
WATER SOURCE  
HEAT PUMP CONSOLE  
SIZE: 12 (52") L.H. PIPING**



**ClimateMaster**  
A COMBINATION OF CHP CORP. AND  
FRIEDRICH<sup>®</sup> CLIMATE MASTER, INC.

**TAG:** \_\_\_\_\_

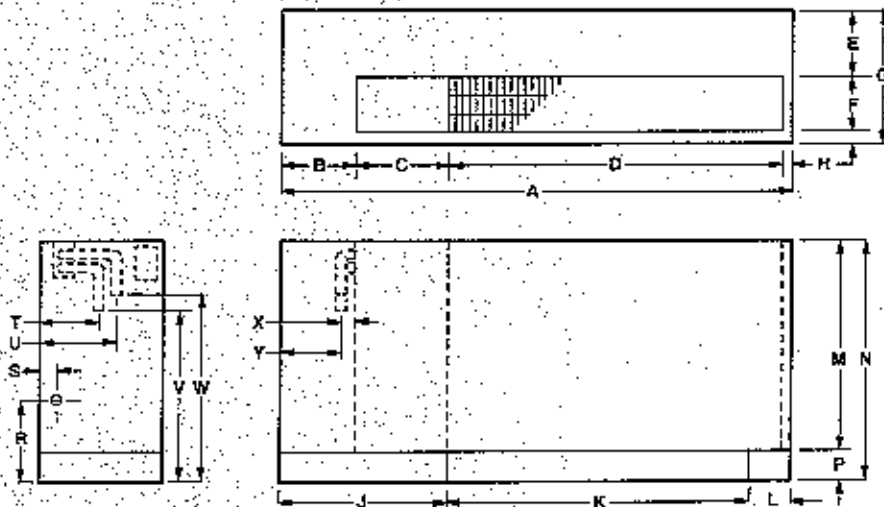
JOB SCHEDULE	TOTAL BTUH	INPUT WATTS	SENSIBLE BTUH	BTUH HEAT OF ABS./REJ.	EER COP	GPM	EWT	LWT	EAT	PRESSURE DROP IN FEET
COOLING										
HEATING										

ELECTRICAL DATA		BLOWER	COMPRESSOR		MIN CKT AMPACITY	MAX. FUSE OR HACR SIZE
VOLTAGE	PHASE	FLA	RLA	LRA		
208/230	1	.45	5.7	28.0	7.58	15
265	1	.45	5.0	27.4	6.70	15

BLOWER PERFORMANCE		INSTALLED WEIGHT	
EXT. STATIC PRES. I.W.G.		lbs.	
CFM		kg.	

**DIMENSIONS**

**AIR FLOW PATTERNS**



Item	52" Cabinet	Item	52" Cabinet	Item	52" Cabinet
A	52" (132.1)	J	17 1/2" (43.5)	T	5 3/4" (14.6)
B	7 1/2" (19.4)	K	20 1/2" (51.8)	U	7" (17.8)
C	9 1/2" (24.1)	L	4" (10.2)	V	17" (43.2)
D	31" (78.7)	M	20 3/4" (53.2)	W	18" (45.7)
E	6 1/4" (17.1)	N	24" (61.0)	X	1 1/2" (3.8)
F	5 1/4" (14.0)	P	2 1/2" (7.8)	Y	5 3/4" (13.6)
G	12 1/4" (31.1)	R	7 1/2" (20.5)		
H	1 1/2" (4.4)	S	1 1/2" (4.4)		

FILTER SIZE	SHIPPING WGT. 195 lbs. 88 kg.
-------------	----------------------------------

Continuing engineering research results in steady improvements. Therefore, these ratings and specifications are subject to change without notice. No one is authorized to reproduce or alter this document in any way without the written authorization of an officer of the company.

**801 SERIES  
WATER SOURCE  
HEAT PUMP CONSOLE**  
SIZE: 15 (52") L.H. PIPING



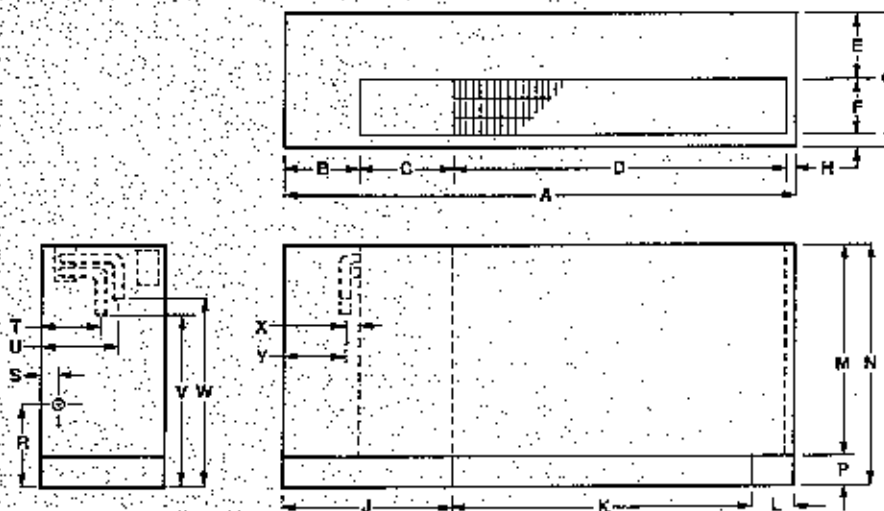
**ClimateMaster**  
A COMBINATION OF CHP CORP AND  
FRIEDRICH™ CLIMATE MASTER, INC.

**TAG:** \_\_\_\_\_

JOB SCHEDULE	TOTAL BTUH	INPUT WATTS	SENSIBLE BTUH	BTUH HEAT OF ABS./REJ.	EER COP	GPM	EWT	LWT	EAT	PRESSURE DROP IN FEET
COOLING										
HEATING										
ELECTRICAL DATA		BLOWER		COMPRESSOR		MIN CKT AMPACITY		MAX. FUSE OR HACR SIZE		
VOLTAGE	PHASE	FLA	RLA	LRA						
208/230	1	.55	6.20	36.0			8.30			15
265	1	.50	5.40	33.0			7.25			15
BLOWER PERFORMANCE						INSTALLED WEIGHT				
EXT. STATIC PRES. I.W.G.						lbs.				
CFM						kg.				

**DIMENSIONS**

**AIR FLOW PATTERNS**



Item	48" Cabinet	Item	48" Cabinet	Item	48" Cabinet
A	48" (122,0)	J	15 1/2" (39,4)	T	5 3/4" (14,6)
B	5 3/4" (14,3)	K	30 3/4" (78,4)	U	7" (17,8)
C	9 1/2" (24,1)	L	2" (5,1)	V	17" (43,2)
D	31" (78,7)	M	20 3/4" (53,2)	W	18" (45,7)
E	6 3/4" (17,1)	N	24" (61,0)	X	1 1/2" (3,8)
F	5 3/4" (14,3)	P	3 1/4" (7,9)	Y	3 3/4" (8,6)
G	12 1/4" (31,0)	R	7 1/4" (18,8)		
H	1/2" (1,3)	S	1 3/4" (4,4)		

FILTER SIZE \_\_\_\_\_ SHIPPING WGT. 200 lbs.  
90 kg.

Continuing engineering research results in steady improvements. Therefore, these ratings and specifications are subject to change without notice. No one is authorized to reproduce or alter this document in any way without the written authorization of an officer of the company.

**801 SERIES  
WATER SOURCE  
HEAT PUMP CONSOLE**  
SIZE: 19 (52") L.H. PIPING



**ClimateMaster**

A COMBINATION OF CHP CORP AND  
FRIEDRICH™ CLIMATE MASTER, INC

**TAG:** \_\_\_\_\_

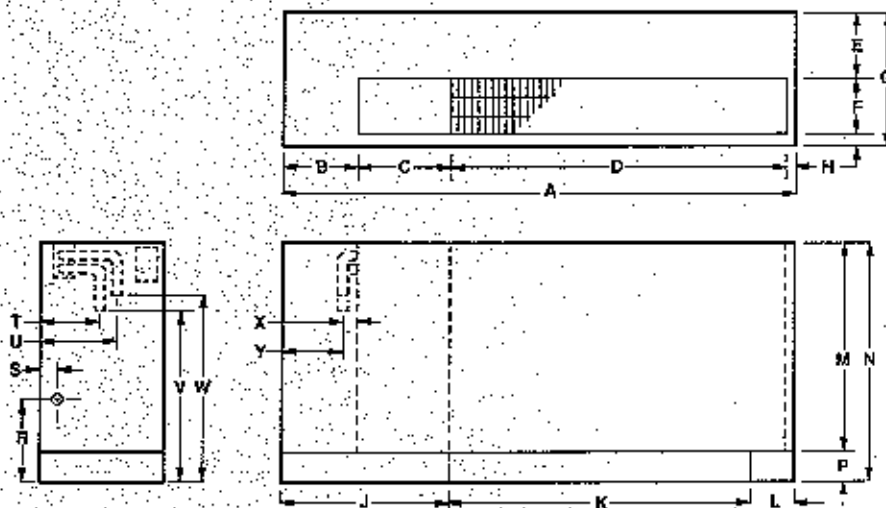
JOB SCHEDULE	TOTAL BTUH	INPUT WATTS	SENSIBLE BTUH	BTUH HEAT OF ABS./REJ.	EER COP	GPM	EWI	LWT	EAT	PRESSURE DROP IN FEET
COOLING										
HEATING										

ELECTRICAL DATA		BLOWER	COMPRESSOR		MIN CKT AMPACITY	MAX. FUSE OR HACR SIZE
VOLTAGE	PHASE	FLA	RLA	LRA		
208/230	1	.55	7.80	40.6	10.30	15
265	1	.50	6.70	34.0	8.87	15

BLOWER PERFORMANCE			INSTALLED WEIGHT		
EXT. STATIC PRES. I.W.G.			lbs.		
CFM			kg.		

**DIMENSIONS**

**AIR FLOW PATTERNS**



Item	52" Cabinet	Item	52" Cabinet	Item	52" Cabinet
A	52" (132.1)	J	17 1/4" (43.5)	T	5 3/8" (14.0)
B	7 1/2" (19.0)	K	30 3/4" (78.0)	U	7" (17.8)
C	9 1/2" (24.1)	L	4" (10.2)	V	17" (43.2)
D	31" (78.7)	M	20 1/4" (51.8)	W	18" (45.7)
E	6 1/4" (16.3)	N	24" (61.0)	X	1 1/2" (3.8)
F	5 1/4" (13.7)	P	3 1/4" (8.6)	Y	5 1/4" (13.6)
G	12 1/2" (31.8)	R	7 1/4" (18.5)		
H	1" (2.5)	S	1 3/4" (4.4)		

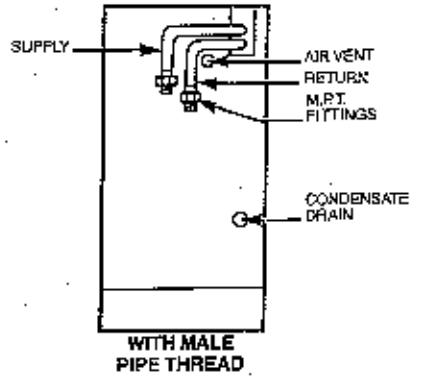
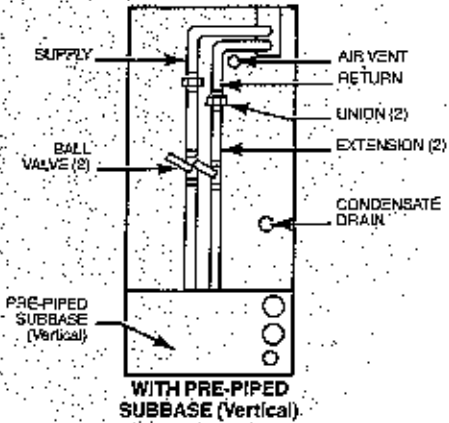
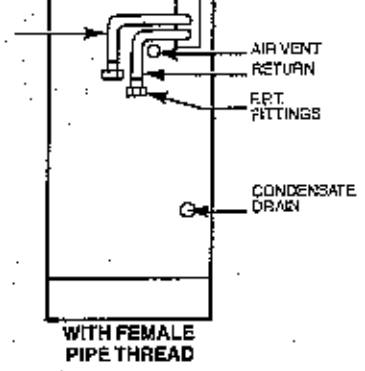
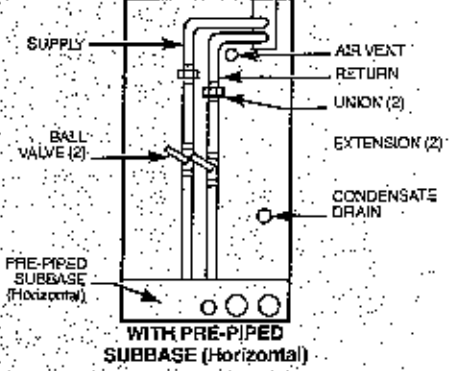
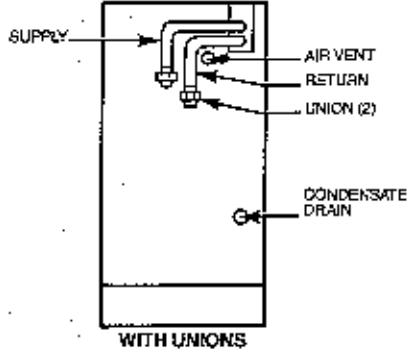
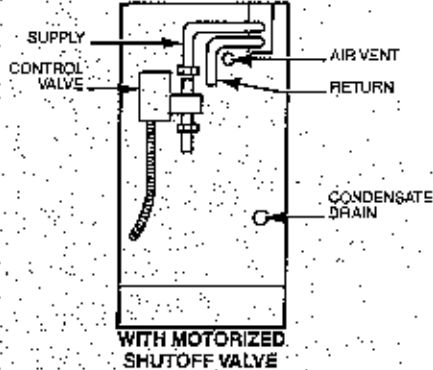
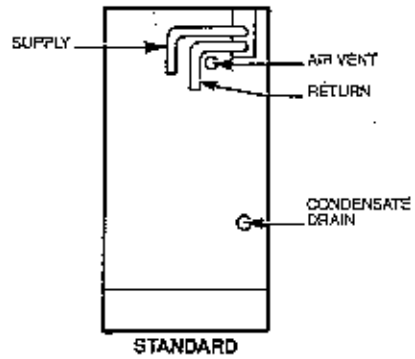
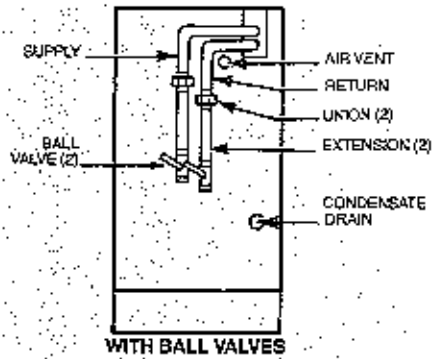
FILTER SIZE	SHIPPING WGT.	220 lbs. 99 kg.
-------------	---------------	--------------------

Continuing engineering research results in steady improvements. Therefore, these ratings and specifications are subject to change without notice. No one is authorized to reproduce or alter this document in any way without the written authorization of an officer of the company.



# 801 SERIES

## WATER PIPING OPTIONS RIGHT HAND



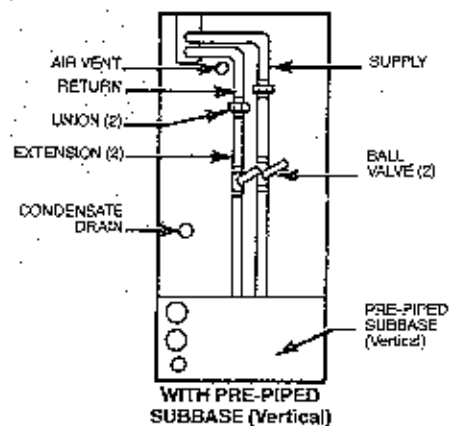
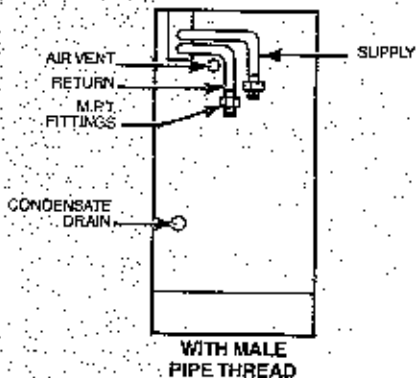
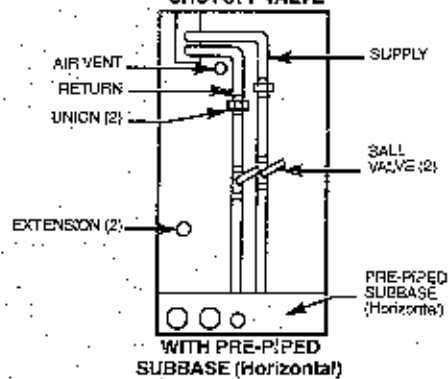
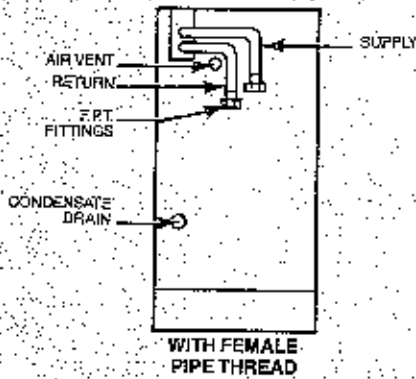
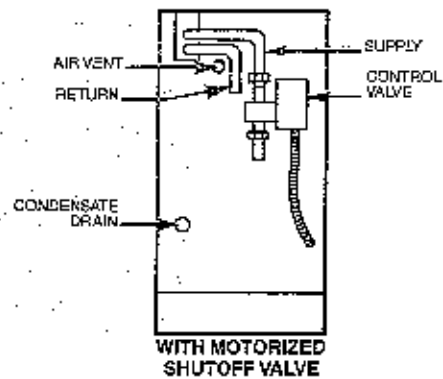
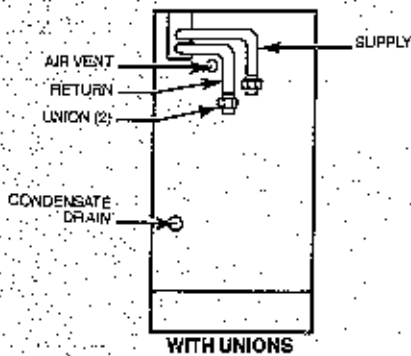
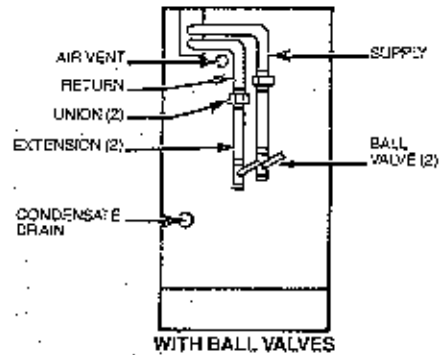
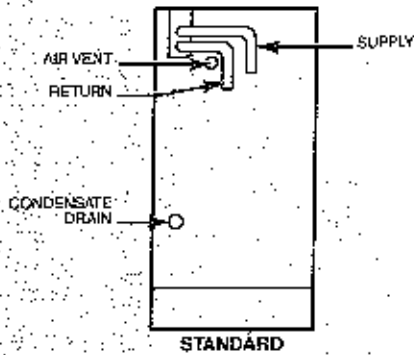
Continuing engineering research results in steady improvements. Therefore, these specifications are subject to change without notice.

89-12-801  
Printed in U.S.A.

**ClimateMaster**  
A COMBINATION OF CHP CORP. AND FRIEDRICH™ CLIMATE MASTER, INC.

# 801 SERIES

## WATER PIPING OPTIONS LEFT HAND



Continuing engineering research results in steady improvements. Therefore, these specifications are subject to change without notice.

86-12-801  
Printed in U.S.A.

**ClimateMaster**  
A COMBINATION OF CHP CORP. AND FRIEDRICH™ CLIMATE MASTER, INC.