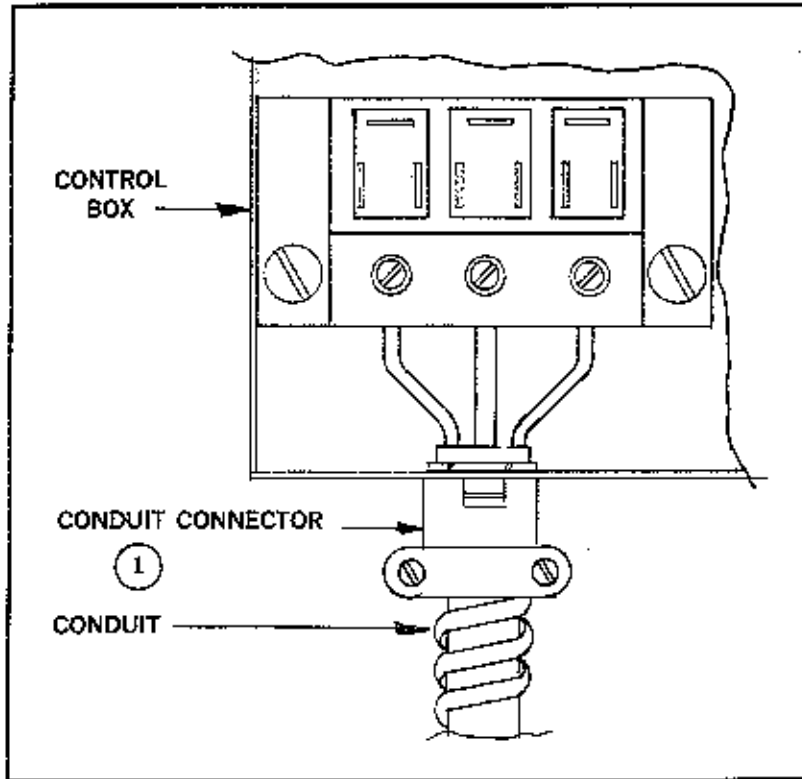
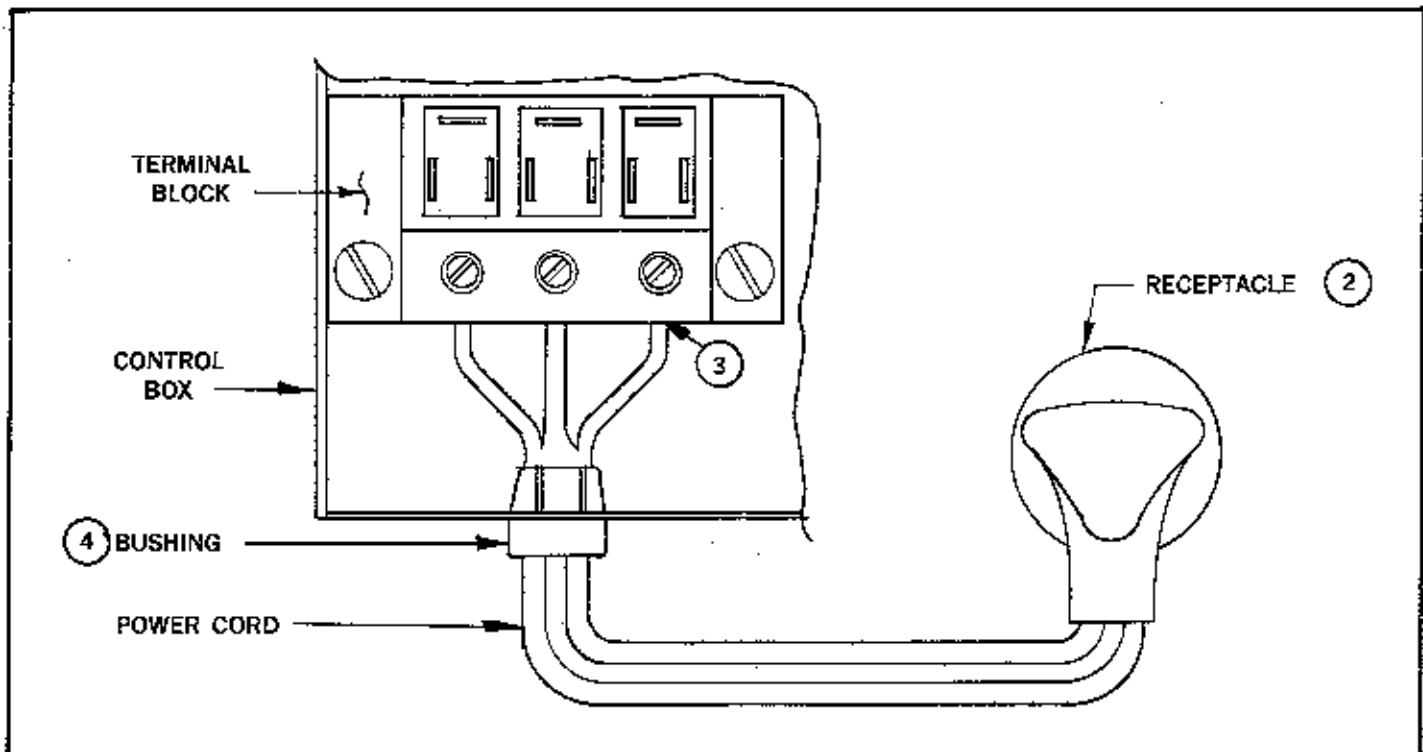




## Installation Instructions for Installing Plug and Cord Kits



1. Remove conduit power wires and conduit connector from control to contractor junction box.
2. Contractor to add receptacle to junction box.
3. Attach power cord to terminal block.
4. Add bushing to power cord at control box knock out.
5. Receptacle furnished by others as specified on attached chart.





## Matching Chart

CORD	AMP	VOLTS	PLUG	RECEPTACLES
#14/3	15	115	Leviton (10011)  (W)=Neutral (WH or N)  (GR)=Ground	2 POLE, 3 WIRE Leviton (5015) Hubbell (5251) 
#14/3	15	208/230	Leviton (10012)	2 POLE, 3 WIRE Leviton (5029) Hubbell (5661) 
#14/3	15	277	GE (4326-5)	2 POLE, 3 WIRE Leviton (5585) Hubbell (5302) 
#12/3	20	208/230	Leviton (20012)	2 POLE, 3 WIRE Leviton (5821) Hubbell (5461) Eagle (1876) 
#12/3	20	277	GE (AKP6512-007)	2 POLE, 3 WIRE GE (4290-3) Eagle (834) 
#10/3	30	208/230	Hubbell (2621)  (X-Y)=L1 or L2	2 POLE, 3 WIRE Hubbell (2620) 
#10/3	30	277	Hubbell (2631)  (W)=Neutral (WH or N)	2 POLE, 3 WIRE Hubbell (2630) 