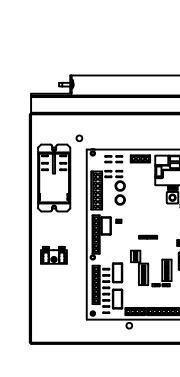
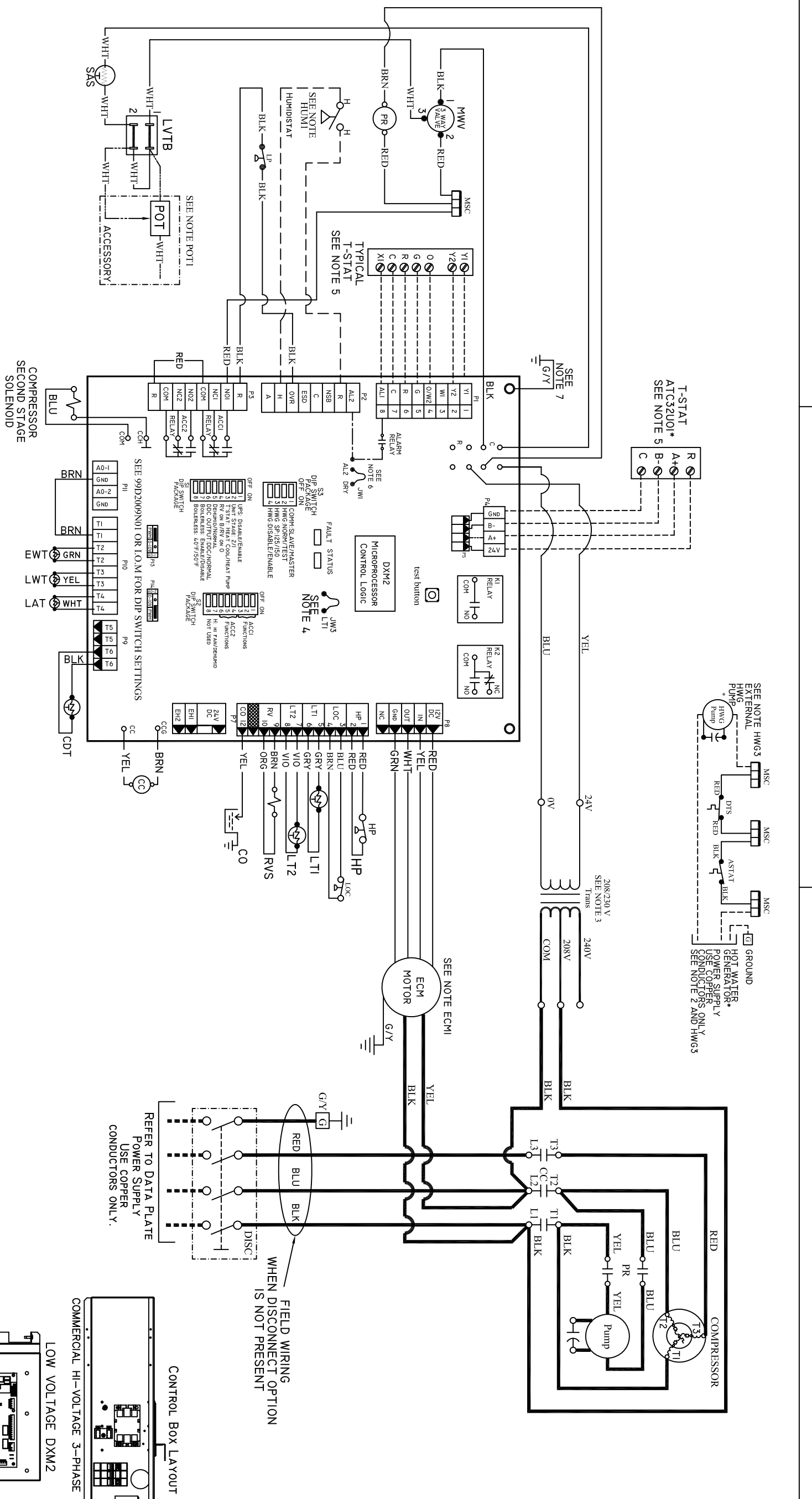


LEGEND	
	Factory Low voltage Wiring
	Factory Line Voltage Wiring
	Field Low voltage Wiring
	Field Line voltage Wiring
	Printed Circuit Trace
	Optional Wiring
	Optional Block
	Capacitor
	Circuit Breaker
	Condensate Pan
	Ground
	High Pressure Switch
	LED
	Low Pressure Switch
	Mate-N-Lock
	Multi Splice Connector
	Optional
	OVERLOAD
	Relay contacts - N.C.
	Relay contacts - N.O.
	Relay / Contactor Coil
	Solenoid Coil
	Splice Cap
	Temperature Switch
	Thermistor
	Wire Nut

AL	Alarm Relay Contacts
AM	Blower Motor
BMC	Blower Motor Capacitor
BR	Blower Relay
CBP	Capacitor
CB	Circuit Breaker
CC	Compressor Contactor
CO	Condensate Overflow Sensor
CR	Compressor Relay
CTB	Common Terminal Block
CS	Current Sensor
DHW	Domestic Hot Water
DM	Damper Motor
DTS	Discharge Temperature Switch
ES	End Switch
EWTS	Entering Water Temp Sensor
FP1	Sensor, low temp protection, water coil
FP2	Sensor, low temp protection, air coil
FSS	Fan Speed Switch
HP	High Pressure Switch
HPA	High Pump Ambient Temp Switch
HPWS	High Pressure Water Switch
HR	Heating Relay
JW	Jumper Wire
LAT	Leaving Air Temperature
LOC	Loss of Change Pressure Switch
LOC	Lock Out Relay
LOR	Low Pressure Switch
LP	Low Voltage Terminal Block
LVTB	Leaving Water Temp Sensor
LWTS	Modulating Water Valve
MOD	Manual Starter
MS	Manual Starter
MSC	Multi Splice Connector
MWV	Motorized Water Valve
PB	Power Terminal Block
PDB	Power Distribution Block
POT	Potentiometer
P1	Field Wiring Terminal Block
PR	Pump Relay
RAS	Return Air Sensor
RVS	Reversing Valve Solenoid
SAC	Start Assist Capacitor
SAS	Supply Air Sensor
TB	Terminal Block
TRANS	Transformer
TS	Terminal Strip
UMT	Unit Mounted Thermostat

- NOTES:
- Compressor and Blower Motor thermally protected internally.
 - All wiring to the unit must comply with NEC and local codes.
 - 208/230V transformer will be connected for 208V operation. For 240V operation, disconnect 208 terminal and attach to 240V terminal. Insulate unused terminals on transformer.
 - FP1 provides low temperature protection for WATER. When using ANTI-FREEZE solutions, cut JW3 jumper.
 - Typical heat pump thermostat wiring shown. Refer to thermostat IOM for wiring to the unit. T-Stat wiring must be "Class 1" and voltage rating equal to or greater than unit supply voltage.
 - 24V Alarm signal shown. For Dry Alarm contact between AL1 & AL2, cut JW1 for CXM/DXM Gen2 or JW4 DXM1.

- Transformer Secondary Ground via CXM/DXM board standoff's and screws to Control Box.
- ECM1. For ECM Blower Motor air flow adjustment and diagnostic information refer to IOM.
- HWG3. AQUA STAT is supplied with unit and must be wired in series with the hot leg to the pump. Aqua stat is rated for voltage up to 277V.
- HUM1. Refer to HUMIDISTAT Installation application, and Operation Manual For Control Wiring to the unit.
- HUM2. Dehumidistat Operation (24 VAC at H) DIP 2.1 OFF, DIP 2.2 OFF, DIP 2.3 OFF, DIP 2.5 On.
- HUM3. Humidistat Operation (0 VAC at H) DIP 2.1 OFF, DIP 2.2 OFF, DIP 2.3 OFF, DIP 2.5 On.
- POT1. Remove Jumper Wire and Connect wires for Potentiometer Accessory Option Place Potentiometer Label Before Knob Installation.



REFER TO DATA PLATE
POWER SUPPLY
USE COPPER
CONDUCTORS ONLY.

FIELD WIRING
WHEN DISCONNECT OPTION
IS NOT PRESENT