

# INSTALLATION INSTRUCTIONS

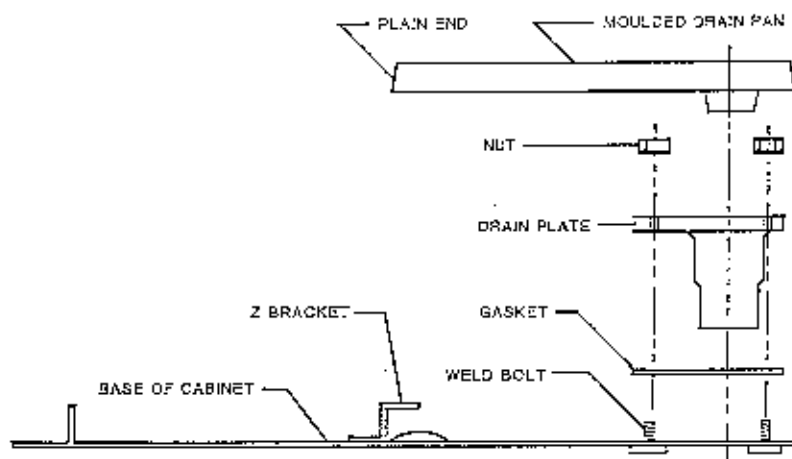
For

## DRAIN KIT

PART NO. AD0001

For Use With 702 / 703 / 704 SP Cabinet

1. Remove and discard plastic plug located in drain opening at bottom right inside of cabinet.
2. Place gasket over 4 weld bolts.
3. Install drain plate over 4 weld bolts and tighten with nuts provided.
4. Insert plain end of moulded drain pan at slight angle into Z shaped bracket and lower other end (with drain hole) into opening of drain plate.
5. For proper drainage of condensate, the cabinet must be installed level. Failure to do so will result in water leakage into the room or wall.
6. Caution: If copper tubing is soldered to drain plate, do not overheat connection, as damage to the moulded drain pan will result.
7. This drain kit may not be used in combination with the SP room cabinet extension.



**Friedrich**  
Climate Master

Friedrich Climate Master, Inc.  
2007 Beechgrove Place  
Ulica, New York 13501  
(315) 724-7111

12/84

68371700

# INSTALLATION INSTRUCTIONS

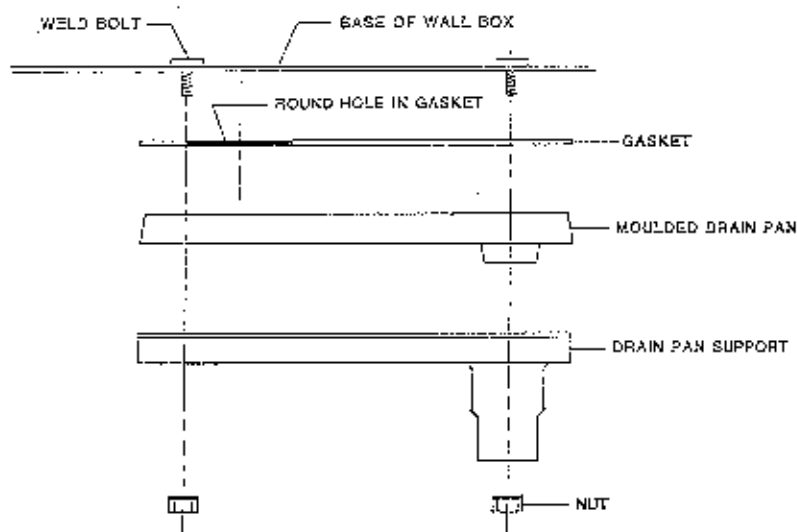
For

## DRAIN KIT

PART NO. AD0002

For Use With 702 / 703 / 704 MP Wall Box

1. Remove and discard plastic plug located in drain opening at bottom right inside of wall box.
2. Locate moulded drain pan into drain pan support.
3. Locate gasket on top of moulded drain pan, keeping round hole opening on opposite side of hole in drain pan.
4. Align the support, drain pan and gasket over the 4 weld bolts protruding down from the base of the wall box and tighten with nuts provided.
5. For proper drainage of condensate, the wall box must be installed level. Failure to do so will result in water leakage into the room or wall.
6. Caution: If copper tubing is soldered to the drain plate do not overheat the connection, as damage to the moulded drain pan will result.



**Friedrich**  
Climate Master

Friedrich Climate Master, Inc.  
2007 Beechgrove Place  
Utica, New York 13501  
(315) 724-7111

12/84

6837 1800