

- NOTES:
1. Compressor and Blower Motor thermally protected internally.
 2. All wiring to the unit must comply with NEC and local codes.
 3. Transformer is wired to 265 V (BRN) lead for 265/60/1 units, 230V (ORG) lead for 220-240/50/1, or 208V (RED) lead for 208/60/1. For 230/60/1 switch RED & ORG leads at L1 and insulate RED lead.
 4. FP1 provides low temperature protection for WATER. When using ANTI-FREEZE solutions, cut JW3 jumper.
 5. Typical heat pump thermostat wiring shown. Refer to thermostat IOM for wiring to the unit. T-Stat wiring must be "Class 1" and voltage rating equal to or greater than unit supply voltage.

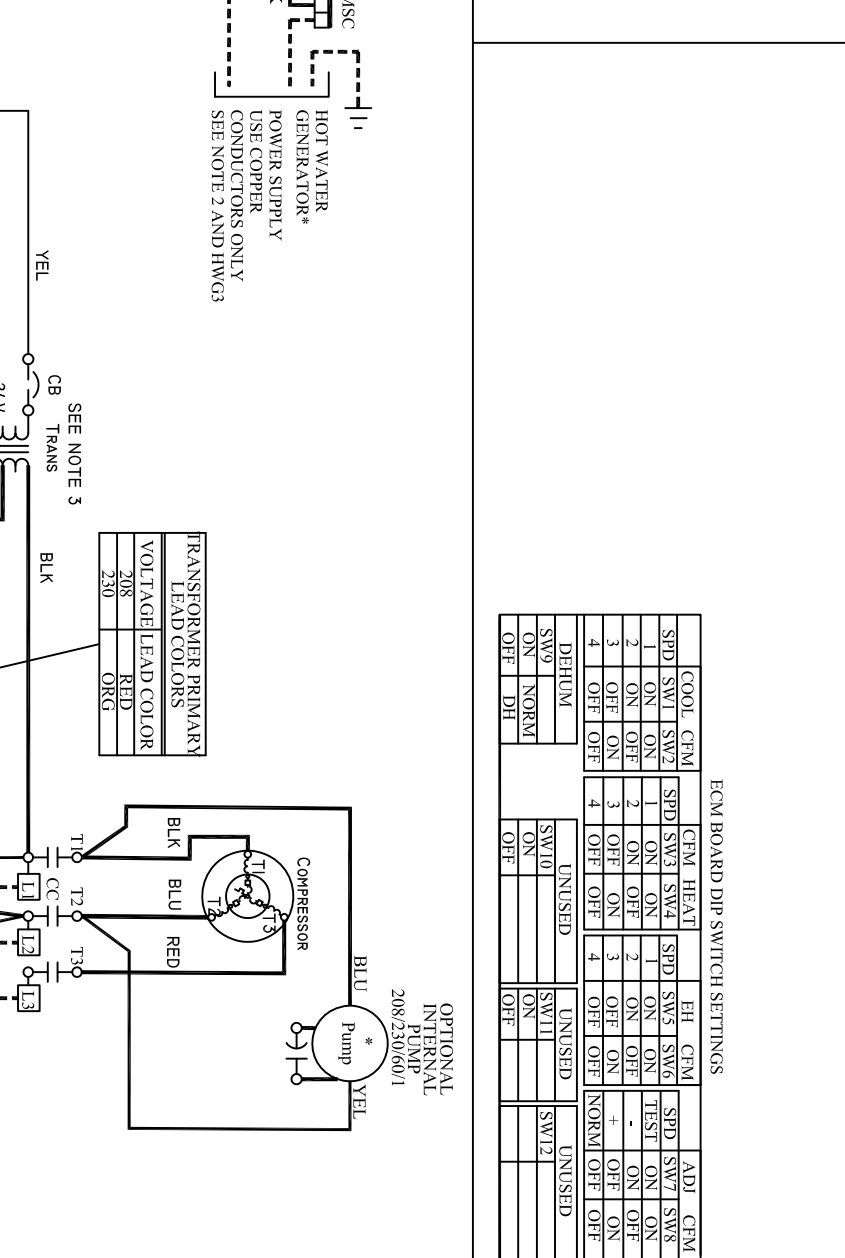
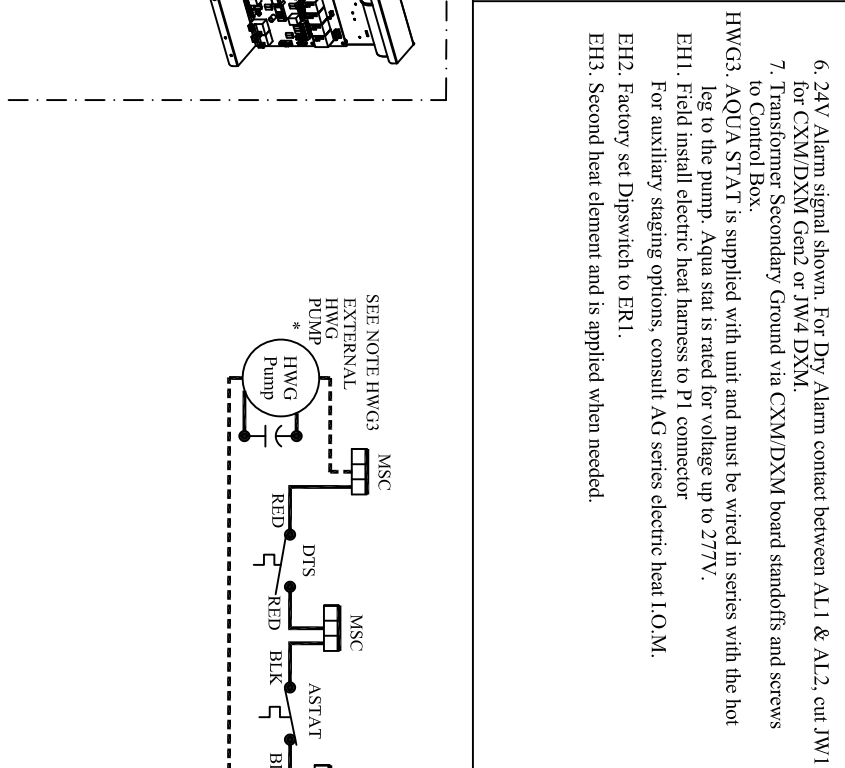
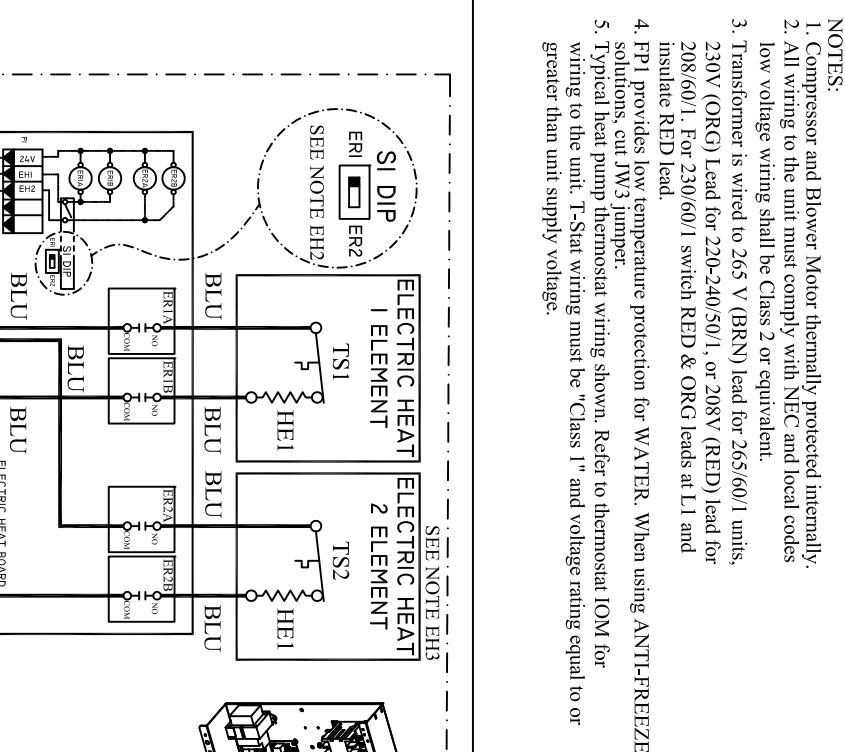
6. 24V Alarm signal shown. For Dry Alarm contact between AL1 & AL2, cut JW1 for CXM/DXM Gen2 or JW4 DXM.
 7. Transformer Secondary Ground via CXM/DXM board standoffs and screws to Control Box.
- HWG3. AQUA STAT is supplied with unit and must be wired in series with the hot leg to the pump. Aqua stat is rated for voltage up to 277V.
- EH1. Field install electric heat harness to P1 connector
For auxiliary staging options, consult AG series electric heat I.O.M.
- EH2. Factory set Dipswitch to ER1.
- EH3. Second heat element and is applied when needed.

ECM BOARD DIP SWITCH SETTINGS

COOL CEM	HEAT CEM	EH CEM	ADJ. CEM
SPD SW1 SW2	SPD SW3 SW4	SPD SW5 SW6	SPD SW7 SW8
1 ON ON	1 ON ON	1 ON ON	1 ON ON
2 ON OFF	2 ON OFF	2 ON OFF	2 ON OFF
3 OFF ON	3 OFF ON	3 OFF ON	3 OFF ON
4 OFF OFF	4 OFF OFF	4 OFF OFF	4 OFF OFF
DEHUM	UNUSED	UNUSED	UNUSED
SW9 ON	SW10 ON	SW11 ON	SW12 ON
OFF DH	OFF	OFF	OFF

LEGEND

- Factory Low voltage Wiring
- Factory Line Voltage Wiring
- Field Low voltage Wiring
- Field Line voltage Wiring
- Printed Circuit Trace
- Optional Wiring
- Optional Block
- Capacitor
- Circuit Breaker
- Condensate Pan
- Ground
- High Pressure Switch
- LED
- Low Pressure Switch
- Mate-N-Lock
- Multi Splice Connector
- Optional
- OVERLOAD
- Relay contacts - N.C.
- Relay contacts - N.O.
- Relay / Contactor Coil
- Solenoid Coil
- Splice Cap
- Temperature Switch
- Thermistor
- Wire Nut



Legend (continued)

- AL Alarm Relay Contacts
- BM Blower Motor
- BMC Blower Motor Capacitor
- BR Blower Relay
- CBP Capacitor
- CB Circuit Breaker
- CC Compressor Contactor
- CO Condensate Over/low Sensor
- CR Compressor Relay
- CTB Common Terminal Block
- CS Current Sensor
- DHW Domestic Hot Water Damper Motor
- DM Damper Motor
- DTS Discharge Temperature Switch
- ES End Switch
- EWTs Entering Water Temp Sensor
- FP1 Sensor, low temp protection, water coil
- FP2 Sensor, low temp protection, air coil
- FSS Fan Speed Switch
- HP High Pressure Switch
- HPWS High Pressure Water Switch
- HR Heating Relay
- JW Jumper Wire
- LAT Leaving Air Temperature
- LOC Loss of Charge Pressure Switch
- LOR Lock Out Relay
- LWTS Leaving Water Temp Sensor
- MOD Modulating Water Valve
- MS Manual Starter
- MSC Multi Splice Connector
- MWV Motorized Water Valve
- PB Power Terminal Block
- PDB Power Distribution Block
- POT Potentiometer
- P1 Field Wiring Terminal Block
- RAS Return Air Sensor
- RVS Reversing Valve Solenoid Start Assist Capacitor
- SAC Start Assist Capacitor
- TB Terminal Block
- TRANS Transformer
- TS Terminal Strip
- UMT Unit Mounted Thermostat

