

LEGEND

- Factory Low voltage Wiring
- Factory Line Voltage Wiring
- Field Low voltage Wiring
- Field Line voltage Wiring
- Printed Circuit Trace
- Optional Wiring
- Optional Block
- Capacitor
- Circuit Breaker
- Condensate Pan
- Ground
- High Pressure Switch
- LED
- Low Pressure Switch
- Mate-N-Lock
- Multi Splice Connector
- Optional
- OVERLOAD
- Relay contacts - N.C.
- Relay contacts - N.O.
- Relay / Contactor Coil
- Solenoid Coil
- Splice Cap
- Temperature Switch
- Thermistor
- Wire Nut

- AL Alarm Relay Contacts
- BL Blower Motor
- BMC Blower Motor Capacitor
- BR Blower Relay
- CBP Capacitor
- CB Circuit Breaker
- CC Compressor Contactor
- CO Compressor Overflow Sensor
- CR Compressor Relay
- CTB Common Terminal Block
- CS Current Sensor
- DHW Domestic Hot Water
- DM Damper Motor
- DTS Discharge Temperature Switch
- ES End Switch
- EWTs Entering Water Temp Sensor
- FP1 Sensor, low temp protection, water coil
- FP2 Sensor, low temp protection, air coil
- FSS Fan Speed Switch
- HP High Pressure Switch
- HPWS High Pressure Water Switch
- HR Heating Relay
- JW Jumper Wire
- LAT Leaving Air Temperature
- LOC Loss of Charge Pressure Switch
- LOR Lock Out Relay
- LWTS Leaving Water Temp Sensor
- MOD Modulating Water Valve
- MS Manual Starter
- MSC Multi Splice Connector
- MWV Motorized Water Valve
- PB Power Terminal Block
- PDB Power Distribution Block
- POT Potentiometer
- P1 Field Wiring Terminal Block
- RAS Return Air Sensor
- RVS Reversing Valve Solenoid
- SAC Start Assist Capacitor
- TB Terminal Block
- TRANS Transformer
- TS Terminal Strip
- UMT Unit Mounted Thermostat

- NOTES:
- Compressor and Blower Motor thermally protected internally.
  - All wiring to the unit must comply with NEC and local codes. low voltage wiring shall be Class 2 or equivalent.
  - Transformer wiring is voltage sensitive. Use the layout corresponding to the unit voltage. For 208/230 volt units, the factory default is 208V. For 308/420V operation the factory default is 380V.
  - FP1 provides low temperature protection for WATER. When using ANTI-FREEZE solutions, cut JW3 jumper.
  - Typical heat pump thermostat wiring shown. Refer to thermostat IOM for wiring to the unit. T-Stat wiring must be "Class 1" and voltage rating equal to or greater than unit supply voltage.

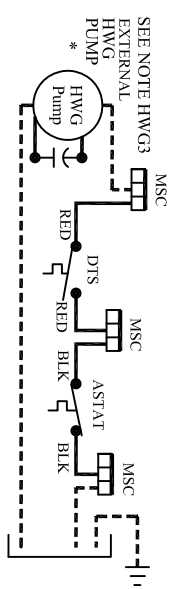
- 24V Alarm signal shown. For Dry Alarm contact between AL1 & AL2, cut JW1 for CXM/DXM Gen2 or JW4 DXM.
- Transformer Secondary Ground via CXM/DXM board standoffs and screws to Control Box.
- AQUA STAT is supplied with unit and must be wired in series with the hot leg to the pump. Aqua stat is rated for voltage up to 277V.
- MP1, Factory cut JW1 (CXM) or JW4 (DXM) jumper. Dry Contact will be available between AL1 and AL2.
- MP2, Refer to MPC Installation application, and Operation Manual For Control Wiring to the unit.
- MPC3, ASW sensors are not required on Water-Water application. ASW06-ASW08 (Water-Air Only) move jumper to LSTAT, ASW13-ASW15 move jumper to Rnet.
- MWV1, Wire from "Y1" on TSTAT/MPC/LON to "Y" on control board when MWV is not used.

ECM BOARD DIP SWITCH SETTINGS

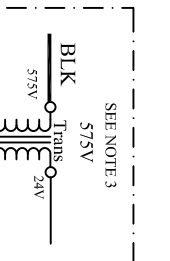
SPD	COOL	HEAT	EH	GM1	ADJ	GM
1	ON	ON	ON	ON	TEST	ON
2	ON	OFF	ON	OFF	ON	OFF
3	OFF	ON	OFF	ON	+	ON
4	OFF	OFF	OFF	OFF	NORM	OFF

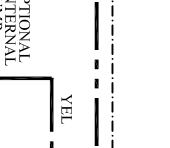
DEHUM	UNUSED	UNUSED	UNUSED
SW9	ON	SW10	ON
SW8	NORM	SW11	OFF
SW7	ON	SW12	UNUSED



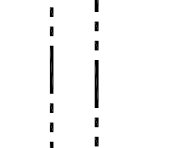
SEE NOTE HWG3  
EXTERNAL HWG PUMP  
\*  
HWG3 Pump



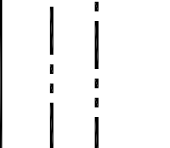
SEE NOTE 3  
575V  
Trans  
24V  
BLK  
CON  
CB



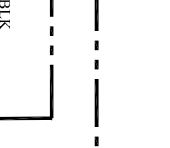
OPTIONAL INTERNAL PUMP 265/60/1  
BLU  
YEL



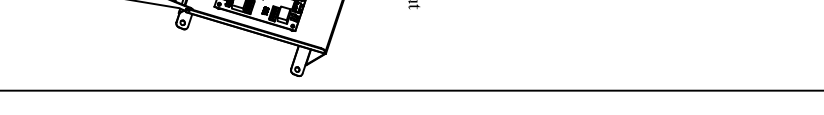
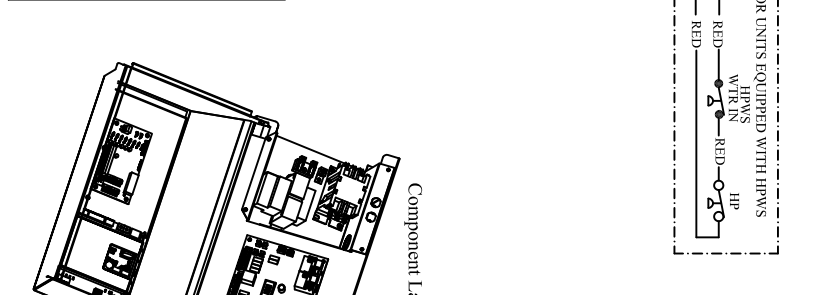
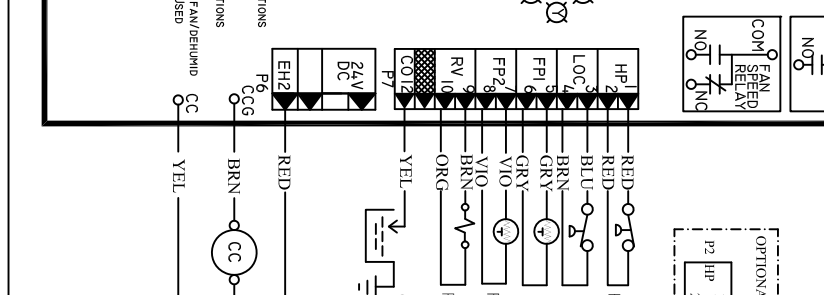
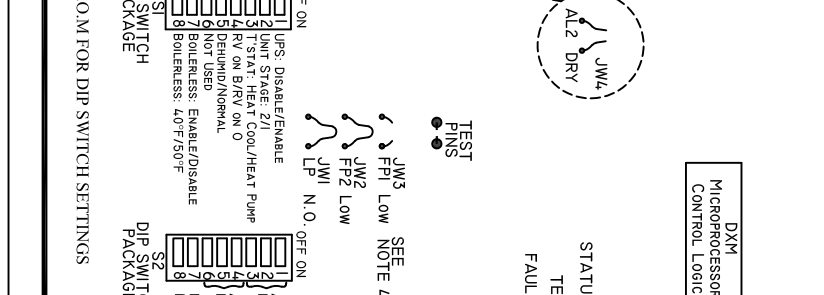
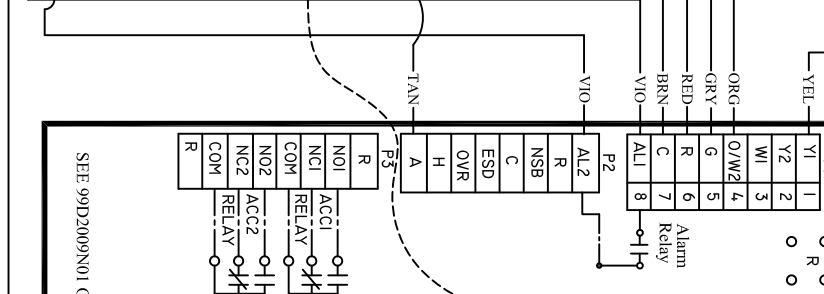
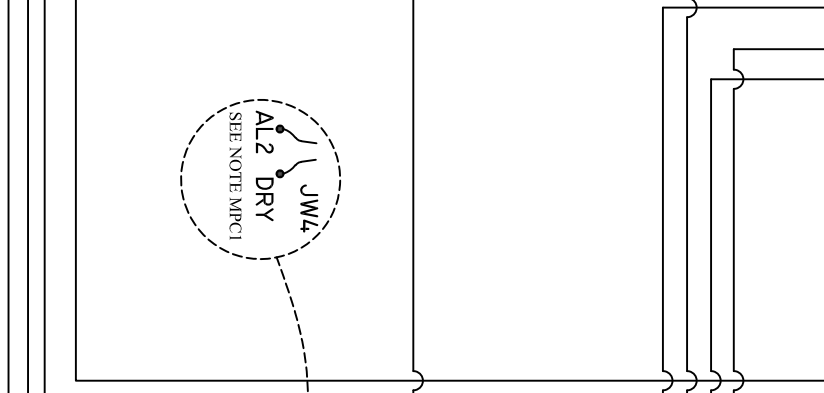
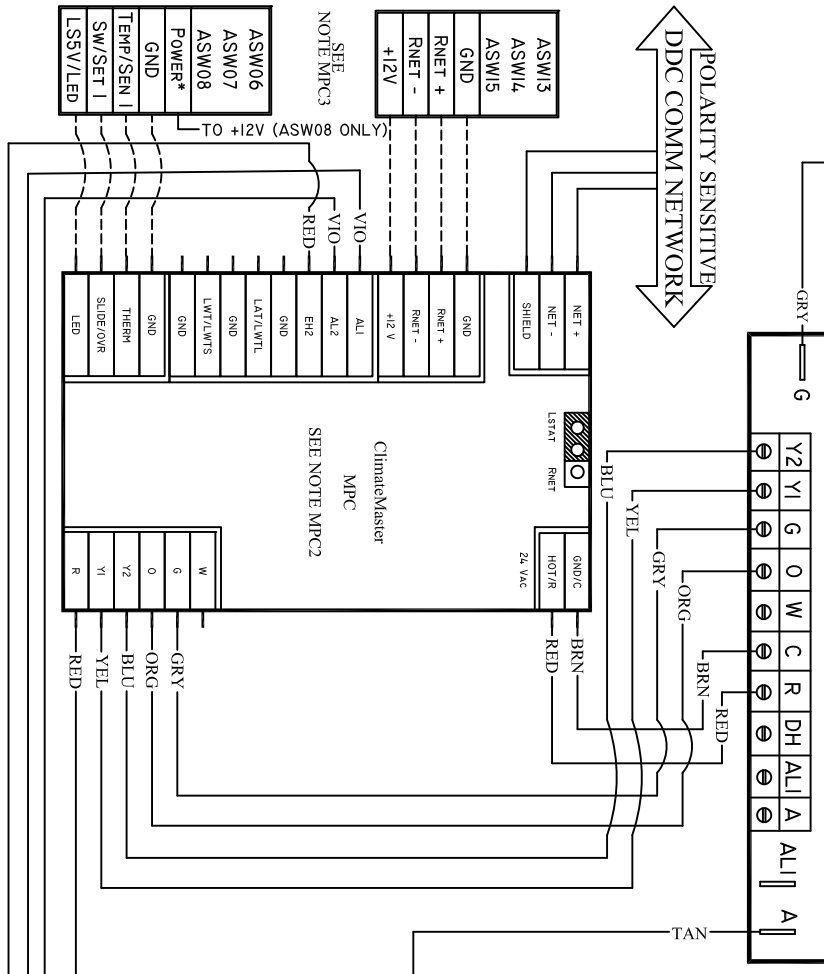
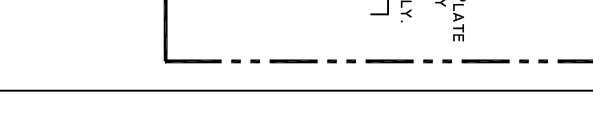
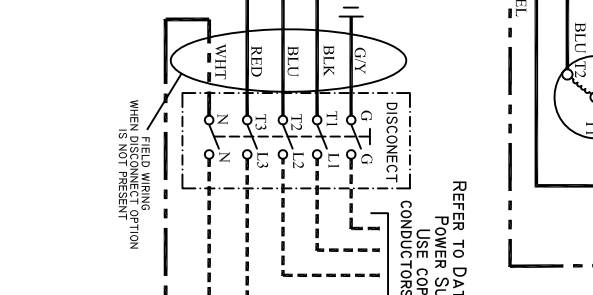
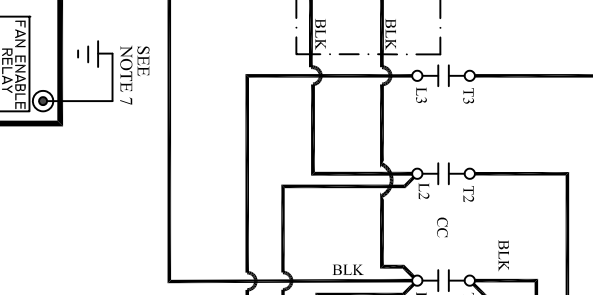
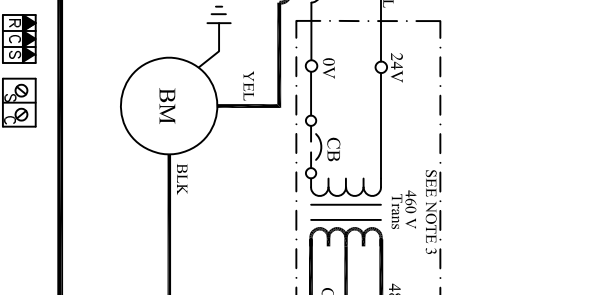
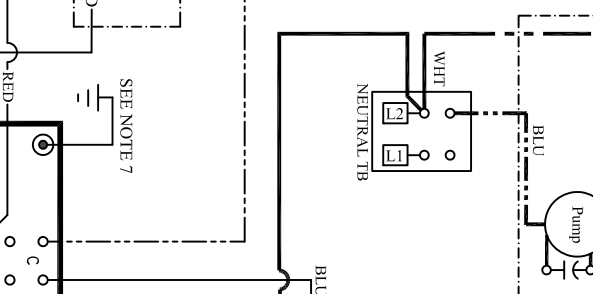
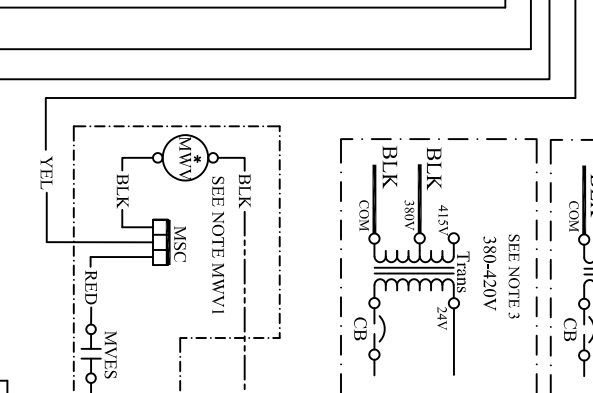
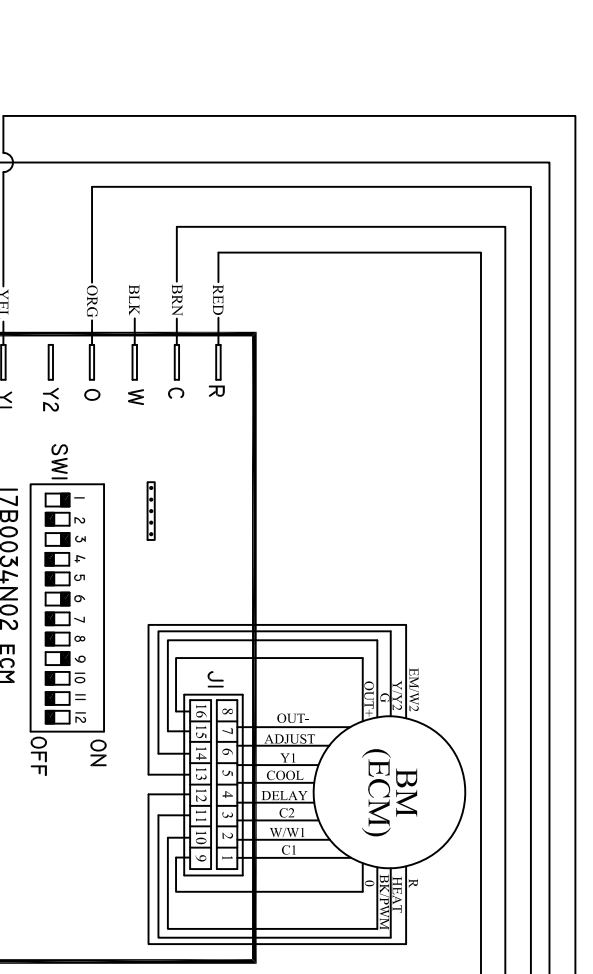
SEE NOTE 3  
460 V  
Trans  
480V  
BLK  
COM



SEE NOTE 3  
480V  
Trans  
480V  
BLK  
COM



REFER TO DATA PLATE  
POWER SUPPLY  
USE COPPER  
CONDUCTORS ONLY.



POLARITY SENSITIVE  
DDC COMM NETWORK

NOTE MPC3  
NOTE MPC2  
NOTE MPC1

SEE NOTE 7  
SEE NOTE 4  
SEE NOTE 3

SEE NOTE 3  
SEE NOTE 3  
SEE NOTE 3

SEE NOTE 7  
SEE NOTE 7  
SEE NOTE 7

SEE NOTE 7  
SEE NOTE 7  
SEE NOTE 7

SEE NOTE 7  
SEE NOTE 7  
SEE NOTE 7

SEE NOTE 7  
SEE NOTE 7  
SEE NOTE 7

SEE NOTE 7  
SEE NOTE 7  
SEE NOTE 7

SEE NOTE 7  
SEE NOTE 7  
SEE NOTE 7

SEE NOTE 7  
SEE NOTE 7  
SEE NOTE 7

SEE NOTE 7  
SEE NOTE 7  
SEE NOTE 7

SEE NOTE 7  
SEE NOTE 7  
SEE NOTE 7

SEE NOTE 7  
SEE NOTE 7  
SEE NOTE 7

SEE NOTE 7  
SEE NOTE 7  
SEE NOTE 7

SEE NOTE 7  
SEE NOTE 7  
SEE NOTE 7

SEE NOTE 7  
SEE NOTE 7  
SEE NOTE 7

SEE NOTE 7  
SEE NOTE 7  
SEE NOTE 7

SEE NOTE 7  
SEE NOTE 7  
SEE NOTE 7

SEE NOTE 7  
SEE NOTE 7  
SEE NOTE 7