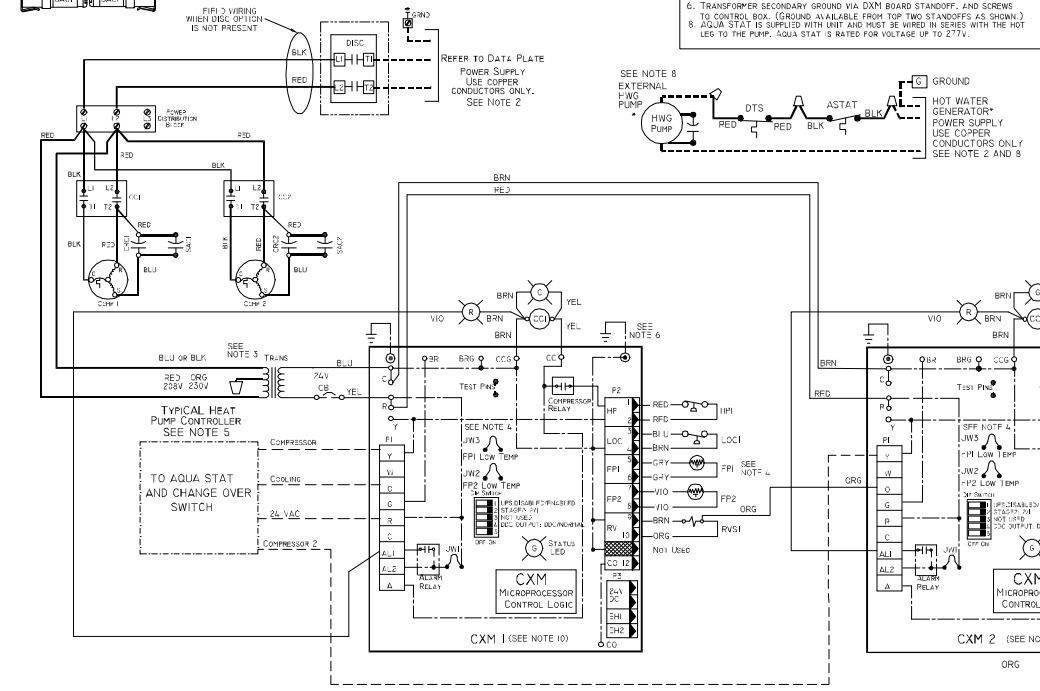


- NOTES:
1. COMPRESSOR MOTOR THERMALLY PROTECTED INTERNALLY.
 2. ALL WIRING TO THE UNIT MUST COMPLY WITH NEC AND LOCAL CODES.
 3. 208/230V TRANSFORMER WILL BE CONNECTED FOR 208V OPERATION. FOR 230V OPERATION, DISCONNECT RED LEAD AT L1, AND ATTACH ORG LEAD TO L1. CLOSE OPEN END OF RED LEAD WITH INSULATING TAPE.
 4. FPI THERMISTOR PROVIDES FREEZE PROTECTION FOR WATER. WHEN USING ANTI-FREEZE SOLUTIONS, CUT JW3 JUMPER.
 5. CHECK INSTALLATION WIRING INFORMATION FOR CONTROLLER HOOKUP REFER TO CONTROL INSTALLATION INSTRUCTIONS FOR WIRING TO THE UNIT. CONTROL WIRING MUST BE "CLASS 1" AND VOLTAGE RATING EQUAL TO OR GREATER THAN UNIT SUPPLY VOLTAGE.
 6. TRANSFORMER SECONDARY GROUND VIA CXM BOARD STANDOFF, AND SCREWS TO CONTROL BOX. (GROUND AVAILABLE FROM TOP TWO STANDOFFS AS SHOWN.) 8. AQUA STAT IS SUPPLIED WITH UNIT AND MUST BE WIRED IN SERIES WITH THE HOT LEG TO THE PUMP. AQUA STAT IS RATED FOR VOLTAGE UP TO 277V.

LEGEND

	FACTORY LINE VOLTAGE WIRING		WIRE NUT		AL ALARM RELAY CONTACTS
	FACTORY LOW VOLTAGE WIRING		MATE-IN-LOCK		CB CIRCUIT BREAKER
	FPI or HP LOW VOLTAGE WIRING		CIRCUIT BREAKER		CR COMPRESSOR RUN CAPACITOR
	FIELD LOW VOLTAGE WIRING		PRINTED CIRCUIT TRACE		D/SC UNIT DISCONNECT
	RELAY COIL		HIGH PRESSURE SWITCH		FPF SPROCK LOAD FREEZE PROTECTION
	SOLENOID COIL		LOW PRESSURE SWITCH		LOC LOSS OF CHARGE PRESSURE SWITCH
	THERMISTOR		TEMPERATURE SWITCH		JW1 JUMPER WIRE ON ALARM
	GROUND		CAPACITOR		F1 FIELD WIRING TERMINAL BLOCK
	INDICATOR LIGHT (GREEN, RED (COMP ON), (ALARM LIGHT))		POSITIVE TEMPERATURE COEFFICIENT RELAY		PBI POWER BLOCK
			SPLICE CAP		PDB POWER DISTRIBUTION BLOCK
					RVS RESOLVING VALVE SOLENOID
					SAC START ASSIST CAPACITOR
					TRNG TRANSFORMER
					* OPTIONAL



CXM CONTROLLER FAULT CODES		
DESCRIPTION OF OPERATION	LED	ALARM RELAY
NORMAL MODE	ON	OPEN
NORMAL MODE W/ UPS WIRING	ON	CYCLE (CLOSED 5 SEC. OPEN 25 SEC.)
CXM IS NON-FUNCTIONAL	OFF	OPEN
FAULT RETRY	SLOW FLASH	OPEN
LOCKOUT	FAST FLASH	CLOSED
OVERVOLTAGE SHUTDOWN	SLOW FLASH	OPEN (CLOSED AFTER 15 MIN)
TEST MODE-NO FAULT IN MEMORY	FLASHING CODE 1	CYCLING CODE 1
TEST MODE-IF FAULT IN MEMORY	FLASHING CODE 2	CYCLING CODE 2
TEST MODE-HP FAULT IN MEMORY	FLASHING CODE 3	CYCLING CODE 3
TEST MODE-FPI FAULT IN MEMORY	FLASHING CODE 4	CYCLING CODE 4
TEST MODE-FP2 FAULT IN MEMORY	FLASHING CODE 5	CYCLING CODE 5
TEST MODE-CO FAULT IN MEMORY	FLASHING CODE 6	CYCLING CODE 6
TEST MODE-OVERVOLTAGE SHUTDOWN IN MEMORY	FLASHING CODE 7	CYCLING CODE 7
TEST MODE-UPS IN MEMORY	FLASHING CODE 8	CYCLING CODE 8
SWAPPED FPI/FP2 LOCKOUT	FLASHING CODE 9	CYCLING CODE 9