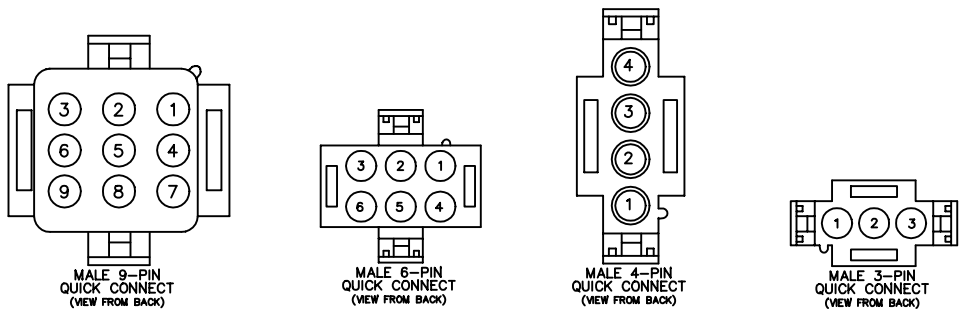
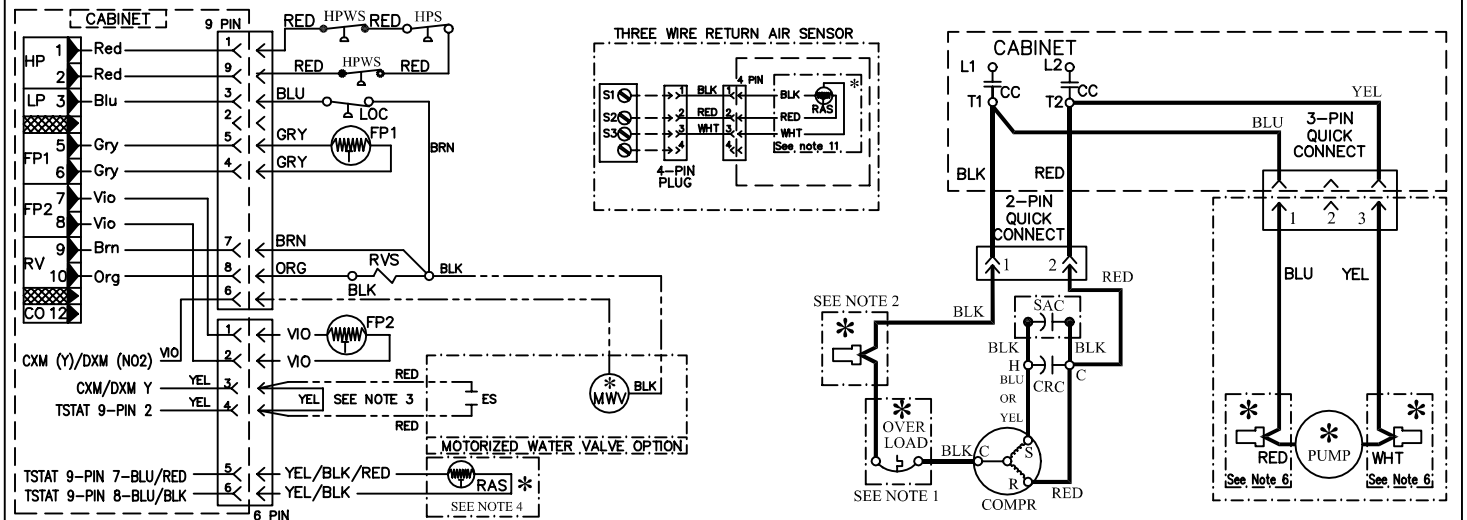


<b>LEGEND:</b> ——— Factory Line Voltage Wiring - - - - - Factory Low Voltage Wiring - - - - - Optional Wiring - - - - - Option Box High Pressure Switch Loss of Charge Switch Sensor, Water Coil Freeze Protection	RV Solenoid Coil RELAY/ACTUATOR COIL CAPACITOR * OPTIONAL ITEMS BUTT CONNECT Splice Cap Wire Nut	CRC Compressor Run Capacitor COMPR Compressor ES Water Valve End Switch HPS High Pressure Switch HPWS High Pressure Water Switch FP1 Sensor, Low Temp Protection Water Coil FP2 Sensor, Low Temp Protection Air Coil LOC Loss of Charge RAS Remote Air Sensor RVS Reversing Valve Solenoid SAC Start Assist Capacitor TBLK Terminal Block MWV Motorized Water Valve	<b>NOTES:</b> 1. Ext. Compr. Overload on Sizes 09, 10, 12 & 15 Only. 2. Used with TRM24/30/36 only. 3. WHEN THERE IS NO MWV END SWITCH, YELLOW JUMPER MUST BE ATTACHED AT PINS 3 & 4. 4. Optional wiring for Remote Air Sensor. Connects to 9-Pin Quick Connect In Cabinet, For Surface mounted TSTAT. 5. SPLICE CAP THE END SWITCH WIRES ON NORMALLY OPEN MOTORIZED WATER VALVE. 6. FOR USE WITH TACO PUMP. RED/YEL AND WHT WIRES ARE INSIDE PUMP WIRING BOX. 7. START ASSIST CAPACITOR FOR SIZES 9 -18 ONLY
---	--	---	--



L	REMOVED LP BLUE WIRE AT PIN NUMBER FOUR & CREATED 96B0136N13	DR	12-0198	04/24/12	JIM T
K	ADDED LP BLUE WIRE AT PIN NUMBER FOUR	MB	12-0119	3/21/12	JIM T
J	ADDED WIRE COLOR AND DESCRIPTION FOR SAC	DR	11-0545	11/01/11	JIM T
I	ADDED START ASSIST CAPACITOR	KB	11-0398	7/28/11	JIM T
H	UPDATED LEGEND AND REMOVED THE CHECKLIST BOX	DR	11-0121	03/18/11	JIM T
REV	DESCRIPTION	BY	PCN	DATE	APPR

7300 SW 44th  
OK CITY, OK 73179  
**TITLE:**  
**CHASSIS 09-36 CXM & DXM**  
**(P) CONTROLS INCLUDING SBV MWV**  
**DRAWING NO: 96B0036N15**