

LEGEND

- FACTORY LOW VOLTAGE WIRING
- FACTORY LINE VOLTAGE WIRING
- FIELD LOW VOLTAGE WIRING
- FIELD LINE VOLTAGE WIRING
- PRINTED CIRCUIT TRACE
- OPTIONAL LOW VOLTAGE WIRING
- OPTIONAL LINE VOLTAGE WIRING
- OPTIONAL BOX

- RELAY / CONTACTOR COIL
- THERMISTOR
- CONDENSATE FAN
- GROUND
- OPTIONAL
- WIRE NUT
- SPLICE CAP
- LED

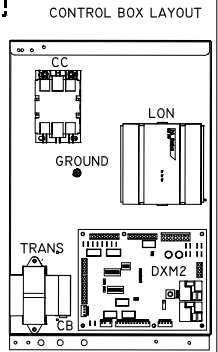
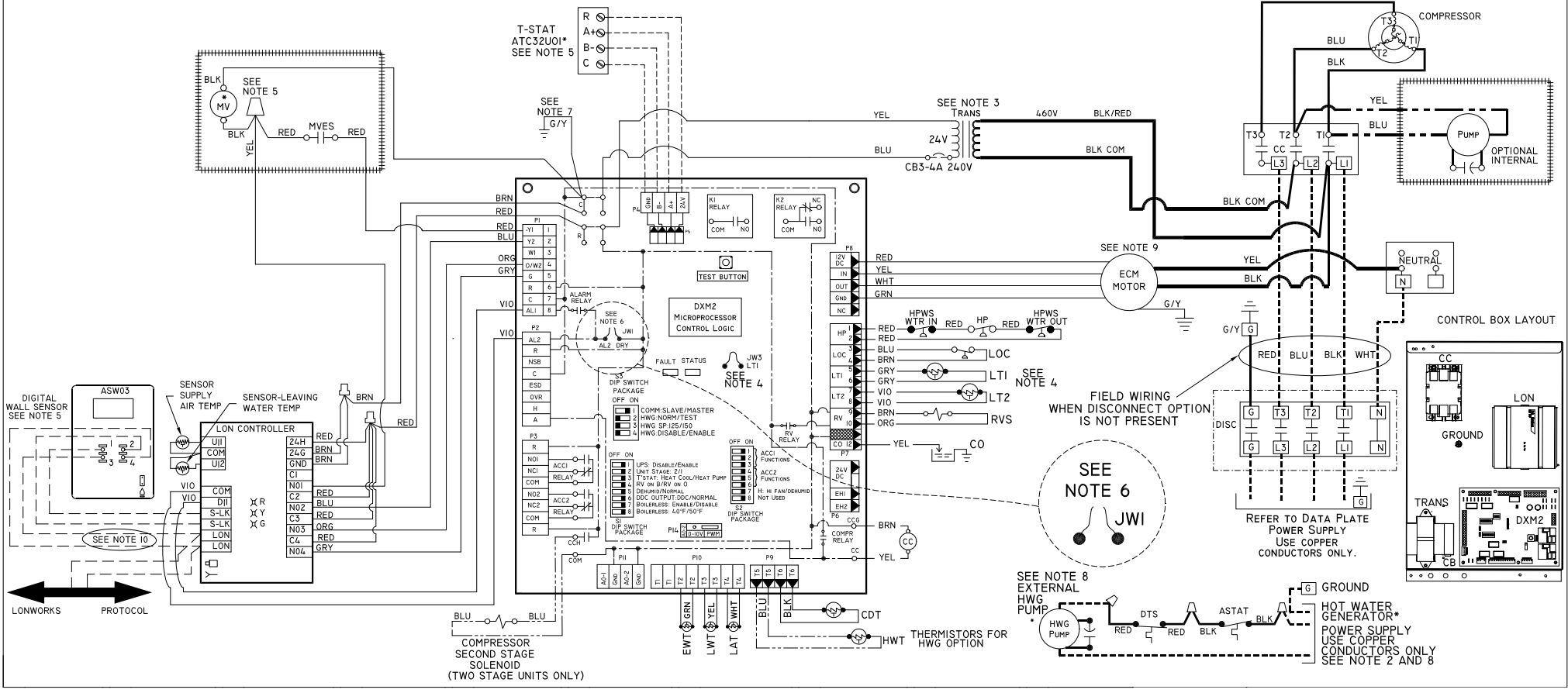
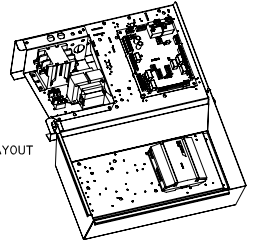
- CIRCUIT BREAKER
- SOLENOID COIL
- RELAY CONTACTS - N.C.
- RELAY CONTACTS - N.O.
- CAPACITOR
- TEMPERATURE SWITCH
- LOW PRESSURE SWITCH
- HIGH PRESSURE SWITCH

- AL ALARM RELAY CONTACTS
- BH BLOWER MOTOR
- BMC BLOWER MOTOR CAPACITOR
- BR BLOWER RELAY
- CRC COMPRESSOR RUN CAPACITOR
- CB CIRCUIT BREAKER
- CC COMPRESSOR CONTACTOR
- CD COMPRESSOR DISCHARGE TEMPERATURE SENSOR
- CO CONDENSATE OVERFLOW SENSOR
- EWT ENTERING WATER TEMPERATURE
- HP HIGH PRESSURE SWITCH
- HPA HIGH PUMP AMBIENT TEMP SWITCH
- HPWS HIGH PRESSURE WATER SWITCH
- HWG HOT WATER GENERATOR

- HWT HOT WATER GENERATOR
- JW JUMPER WIRE
- LAT LEAVING AIR TEMPERATURE
- LOC LOSS OF CHARGE PRESSURE SWITCH
- LTI WATER COIL LOW TEMPERATURE PROTECTION SENSOR
- LT2 AIR COIL LOW TEMPERATURE PROTECTION SENSOR
- PB FIELD WIRING POWER BLOCK
- PR PUMP RELAY
- RV REVERSING VALVE
- TRANS TRANSFORMER
- WV WATER VALVE
- LWT LEAVING WATER TEMPERATURE

NOTES:

- COMPRESSOR AND BLOWER MOTOR THERMALLY PROTECTED INTERNALLY.
- ALL WIRING TO THE UNIT MUST COMPLY WITH NEC AND LOCAL CODES.
- TRANSFORMER IS WIRED 460V (BLK/RED) LEAD FOR 460/60/3 UNITS.
- TRANSFORMER IS ENERGY LIMITING OR MAY HAVE CIRCUIT BREAKER.
- LTI THERMISTOR PROVIDES LOW TEMPERATURE PROTECTION FOR WATER. WHEN USING ANTIFREEZE SOLUTIONS, CUT JWS JUMPER. WIRE "Y" FROM T-STAT TO "Y" DXM WHEN A MOTORIZED VALVE IS NOT USED.
- T-STAT WIRING MUST BE "CLASS 1" AND VOLTAGE RATINGS EQUAL TO OR GREATER THAN UNIT SUPPLY VOLTAGE.
- 24V ALARM SIGNAL AT ALL. FOR DRY CONTACT BETWEEN AL1 & AL2, CUT JW1.
- TRANSFORMER SECONDARY GROUND VIA CXM/DXM BOARD STANDOFFS & SCREWS TO CONTROL BOX. (GROUND AVAILABLE FROM TOP TWO STANDOFFS AS SHOWN.)
- AQUA STAT IS SUPPLIED WITH UNIT AND MUST BE WIRED IN SERIES WITH THE HOT LEG TO THE PUMP. AQUA STAT IS RATED FOR VOLTAGE UP TO 277V.
- FOR ECM BLOWER MOTOR AIR FLOW ADJUSTMENT AND DIAGNOSTIC INFORMATION REFER TO UNIT IOM.
- OPTIONAL LON WIRES. ONLY CONNECT IF LON CONNECTION IS DESIRED AT THE WALL SENSOR.



LONWORKS PROTOCOL

COMPRESSOR SECOND STAGE SOLENOID (TWO STAGE UNITS ONLY)

CDT THERMISTORS FOR HWG OPTION

REFER TO DATA PLATE POWER SUPPLY USE COPPER CONDUCTORS ONLY.

SEE NOTE 2 AND 8