

**LEGEND**

- FACTORY LOW VOLTAGE WIRING
- FACTORY LINE VOLTAGE WIRING
- FIELD LOW VOLTAGE WIRING
- FIELD LINE VOLTAGE WIRING
- PRINTED CIRCUIT TRACE
- OPTIONAL LOW VOLTAGE WIRING
- OPTIONAL LINE VOLTAGE WIRING
- OPTIONAL BOX

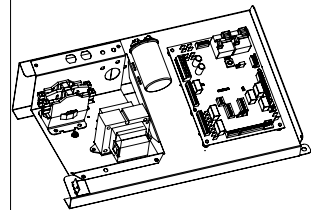
- RELAY / CONTACTOR COIL
- THERMISTOR
- CONDENSATE FAN
- GROUND
- OPTIONAL
- WIRE NUT
- SPLICE CAP
- LED

- CIRCUIT BREAKER
- SOLENOID COIL
- RELAY CONTACTS - N.C.
- RELAY CONTACTS - N.O.
- CAPACITOR
- TEMPERATURE SWITCH
- LOW PRESSURE SWITCH
- HIGH PRESSURE SWITCH

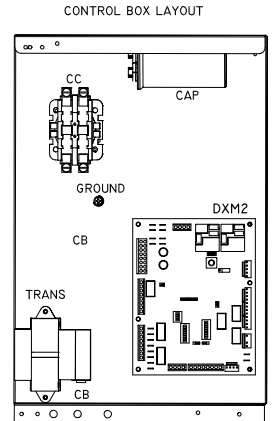
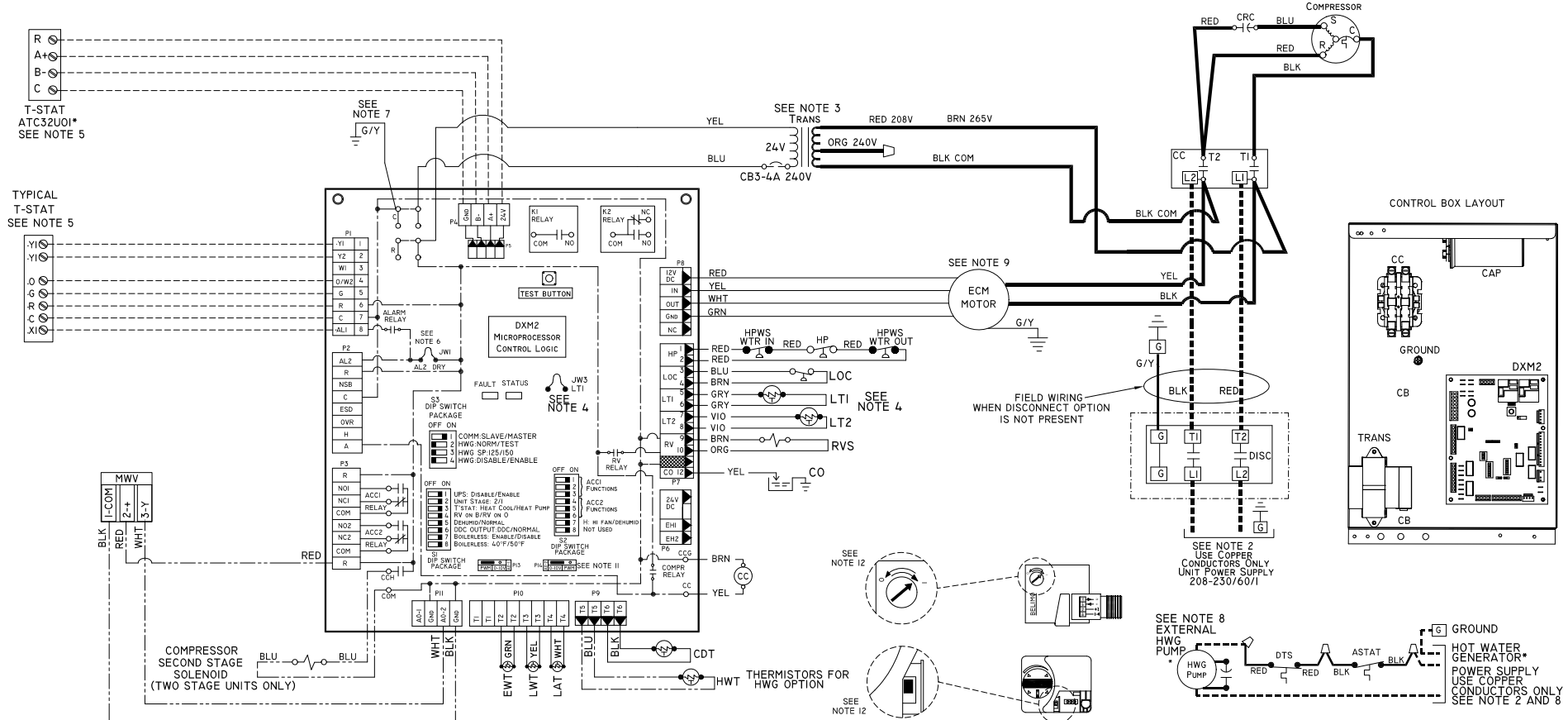
- AL ALARM RELAY CONTACTS
- BH BLOWER MOTOR
- BMC BLOWER MOTOR CAPACITOR
- BR BLOWER RELAY
/>
- CRC COMPRESSOR RUN CAPACITOR
- CB CIRCUIT BREAKER
- CC COMPRESSOR CONTACTOR
- CDT COMPRESSOR DISCHARGE TEMPERATURE SENSOR
- CO CONDENSATE OVERFLOW SENSOR
- EW ENTERING WATER TEMPERATURE
- HP HIGH PRESSURE SWITCH
- HPA HIGH PUMP AMBIENT TEMP SWITCH
- HPWS HIGH PRESSURE WATER SWITCH
- HWG HOT WATER GENERATOR

- HWT HOT WATER GENERATOR
- JW JUMPER WIRE
- LAT LEAVING AIR TEMPERATURE
- LOC LOSS OF CHARGE PRESSURE SWITCH
- LTI WATER COIL LOW TEMPERATURE PROTECTION SENSOR
- LT2 AIR COIL LOW TEMPERATURE PROTECTION SENSOR
- LWT LEAVING WATER TEMPERATURE
- MWV MODULATING WATER VALVE
- PB FIELD WIRING POWER BLOCK
- PR PUMP RELAY
- RV REVERSING VALVE
- TRANS TRANSFORMER
- WV WATER VALVE

- NOTES:**
- COMPRESSOR AND BLOWER MOTOR THERMALLY PROTECTED INTERNALLY.
  - ALL WIRING TO THE UNIT MUST COMPLY WITH NEC AND LOCAL CODES.
  - 208/230V TRANSFORMER MUST BE CONNECTED FOR 208V OPERATION  
 1. FOR 240V OPERATION, DISCONNECT RED LEAD AT L1 AND ATTACH ORG LEAD TO L1. INSULATE OPEN END OF RED LEAD.  
 2. LTI THERMISTOR PROVIDES LOW TEMPERATURE PROTECTION FOR WATER. WHEN USING ANTIFREEZE SOLUTIONS, CUT JW3 JUMPER.  
 T-STAT WIRING MUST BE "CLASS 1" AND VOLTAGE RATING EQUAL TO OR GREATER THAN UNIT SUPPLY VOLTAGE.
  - REFER TO MPC, LON, OR TSTAT INSTALLATION, APPLICATION, AND OPERATION MANUAL FOR CONTROL WIRING TO THE UNIT.  
 WIRE "Y" FROM T-STAT TO "Y" DXM WHEN A MOTORIZED VALVE IS NOT USED.
  - 24V ALARM SIGNAL AT AL1. FOR DRY CONTACT BETWEEN AL1 & AL2, CUT JW1.
  - TRANSFORMER SECONDARY GROUND VIA CXM/DXM BOARD STANDOFFS & SCREWS TO CONTROL BOX.
  - (GROUND AVAILABLE FROM TOP TWO STANDOFFS AS SHOWN.)
  - AQUA STAT IS SUPPLIED WITH UNIT AND MUST BE WIRED IN SERIES WITH THE HOT LEG TO THE PUMP. AQUA STAT IS RATED FOR VOLTAGE UP TO 277V.
  - FOR ECM BLOWER MOTOR AIR FLOW ADJUSTMENT AND DIAGNOSTIC INFORMATION REFER TO UNIT IOM.
  - FOR MWV OPTION, PLACE JUMPER ON 0-10V PINS.
  - FOR MWV OPTION, ENSURE ACTUATOR DIRECTION SWITCH IS SET AS SHOWN.



CONTROL BOX LAYOUT



CONTROL BOX LAYOUT

GROUND  
 HWG PUMP  
 HOT WATER GENERATOR\*  
 POWER SUPPLY  
 USE COPPER  
 CONDUCTORS ONLY  
 SEE NOTE 2 AND 8