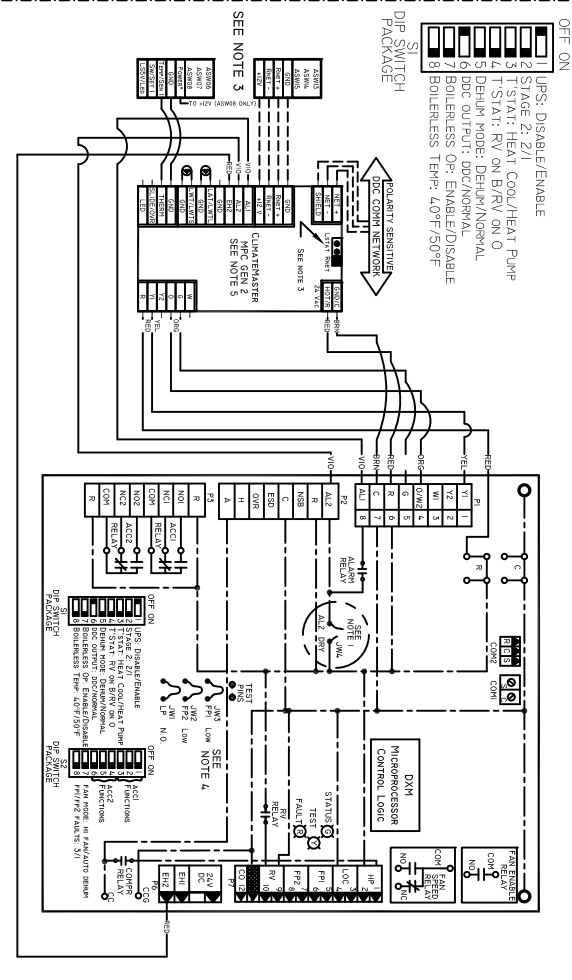
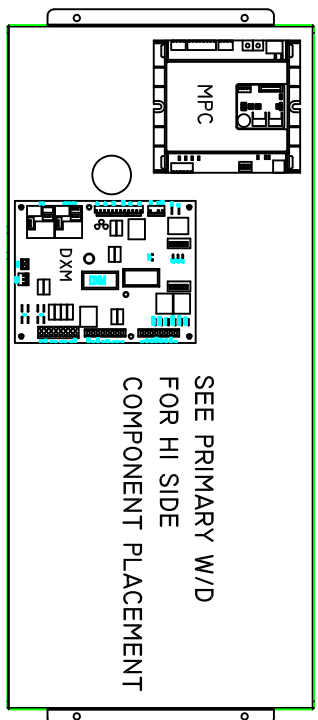


LEGEND	NOTES:
	FACTORY LOW VOLTAGE WIRING
	FACTORY LINE VOLTAGE WIRING
	FIELD LOW VOLTAGE WIRING
	FIELD LINE VOLTAGE WIRING
	PRINTED CIRCUIT TRACE
	OPTIONAL WIRING
	OPTIONAL BLOCK
	CAPACITOR
	CIRCUIT BREAKER
	CONDENSATE PAN
	GROUND
	HIGH PRESSURE SWITCH
	LED
	LOW PRESSURE SWITCH
	MATE-IN-LOCK
	MULTI SPLICE CONNECTOR
	OPTIONAL
	OVERLOAD
	RELAY CONTACTS - N.C.
	RELAY CONTACTS - N.O.
	RELAY / CONTACTOR COIL
	SOLENOID COIL
	SPLICE CAP
	TEMPERATURE SWITCH
	THERMISTOR
	WIRE NUT
AL	ALARM RELAY CONTACTS
AM	BLOWER MOTOR
BMC	BLOWER MOTOR CAPACITOR
BR	BLOWER RELAY
CAP	CAPACITOR
CB	CIRCUIT BREAKER
CC	COMPRESSOR CONTACTOR
CO	CONDENSATE OVERFLOW SENSOR
CR	COMPRESSOR RELAY
CTB	COMMON TERMINAL BLOCK
CS	CURRENT SENSOR
DHW	DOMESTIC HOT WATER
DM	DAMPER MOTOR
DTS	DISCHARGE TEMPERATURE SWITCH
ES	END SWITCH
EWT5	ENTERING WATER TEMP SENSOR
FPI	SENSOR, LOW TEMP PROTECTION, WATER COIL
FP2	SENSOR, LOW TEMP PROTECTION, AIR COIL
FSS	FAN SPEED SWITCH
HP	HIGH PRESSURE SWITCH
HPMS	HIGH PRESSURE WATER SWITCH
HR	HEATING RELAY
JW	JUMPER WIRE
LAT	LEAVING AIR TEMPERATURE
LOC	LOSS OF CHARGE PRESSURE SWITCH
LOR	LOCK OUT RELAY
LWTS	LEAVING WATER TEMP SENSOR
MOD	MODULATING WATER VALVE
MOD	MODULATING WATER VALVE
MS	MANUAL STARTER
MSC	MULTI SPLICE CONNECTOR
MWV	MOTORIZED WATER VALVE
PB	POWER TERMINAL BLOCK
PDB	POWER DISTRIBUTION BLOCK
POT	POTENTIOMETER
PI	FIELD WIRING TERMINAL BLOCK
PR	PUMP RELAY
RAS	RETURN AIR SENSOR
RVS	REVERSING VALVE SOLENOID
SAS	SUPPLY AIR SENSOR
SAC	START ASSIST CAPACITOR
TB	TERMINAL BLOCK
TRANS	TRANSFORMER
TS	TERMINAL STRIP
UMT	UNIT MOUNTED THERMOSTAT

MPC+DXM OPTION

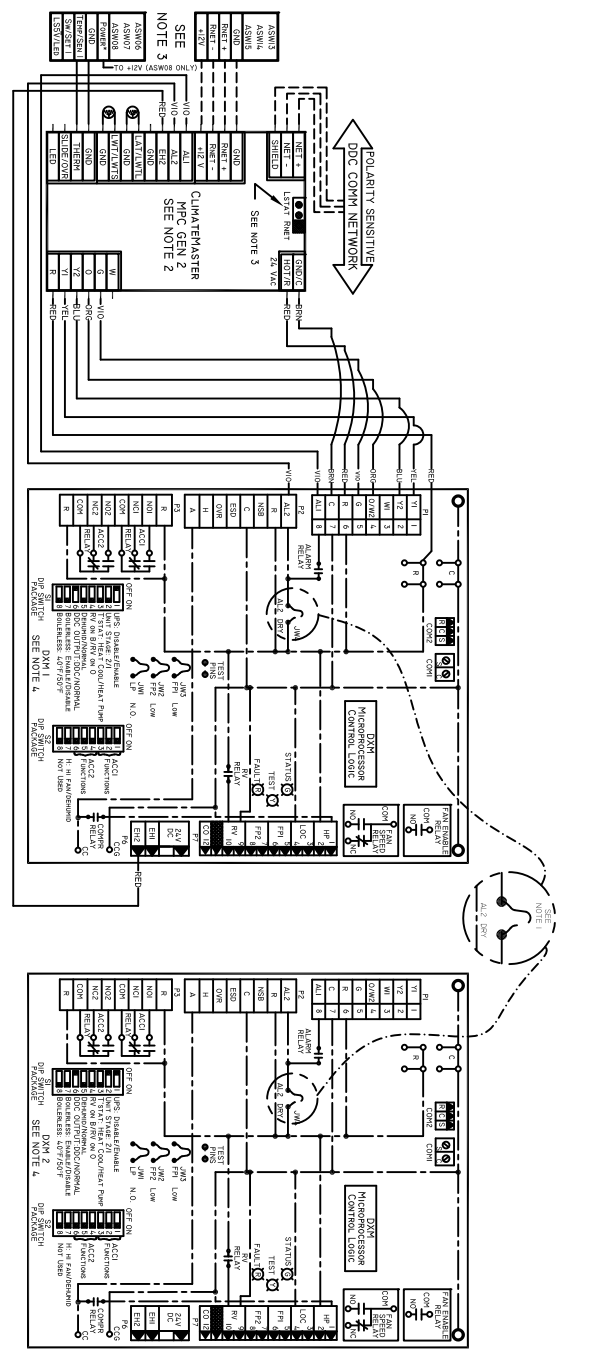


1. FACTORY CUT JW1 (CXM) OR JW4 (DXM) JUMPER. DRY CONTACT WILL BE AVAILABLE BETWEEN AL1 AND AL2.
2. REFER TO MPC INSTALLATION, APPLICATION, AND OPERATION MANUAL FOR CONTROL WIRING TO THE UNIT. LOW VOLTAGE WIRING MUST BE "CLASS 1" AND VOLTAGE RATED EQUAL OR GREATER THAN UNIT SUPPLY VOLTAGE.
3. ASW SENSORS ARE NOT REQUIRED ON WATER-WATER APPLICATION. ASW06-ASW08 (WATER-AIR ONLY) MOVE JUMPER TO LSTAT. ASW13-ASW15 MOVE JUMPER TO RNET. SUFFIX 1 DESIGNATES ASSOCIATION WITH LEAD COMPRESSOR, SUFFIX 2 WITH LAG COMPRESSOR. (APPLIES ONLY TO 2 COMP UNITS.) EXCEPTION AL1, AL2, EH1, EH2, FPI, & FP2
5. CONNECT MANUAL RV CONTROL (DRY CONTACT SIGNAL) BETWEEN GND & SLIDE/ONV

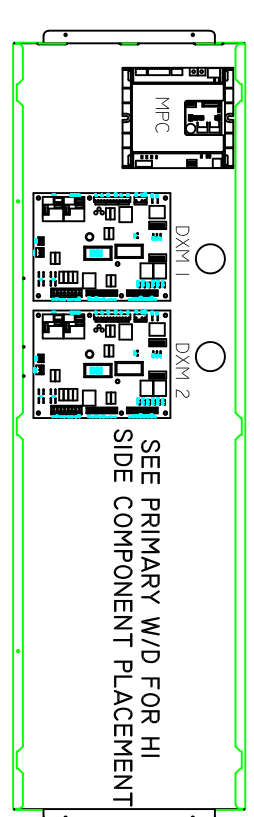


CONTROL BOX LAYOUT LOW SIDE

MPC+DXM (2X) OPTION



1. FACTORY CUT JW1 (CXM) OR JW4 (DXM) JUMPER. DRY CONTACT WILL BE AVAILABLE BETWEEN AL1 AND AL2.
2. REFER TO MPC INSTALLATION, APPLICATION, AND OPERATION MANUAL FOR CONTROL WIRING TO THE UNIT. LOW VOLTAGE WIRING MUST BE "CLASS 1" AND VOLTAGE RATED EQUAL OR GREATER THAN UNIT SUPPLY VOLTAGE.
3. ASW SENSORS ARE NOT REQUIRED ON WATER-WATER APPLICATION. ASW06-ASW08 (WATER-AIR ONLY) MOVE JUMPER TO LSTAT. ASW13-ASW15 MOVE JUMPER TO RNET.
4. SUFFIX 1 DESIGNATES ASSOCIATION WITH LEAD COMPRESSOR, SUFFIX 2 WITH LAG COMPRESSOR. (APPLIES ONLY TO 2 COMP UNITS.) EXCEPTION AL1, AL2, EH1, EH2, FPI, & FP2



CONTROL BOX LAYOUT LOW SIDE