



ELECTRICAL DATA
HS/HL & VS/VL Models 006-060

Submittal Data

Contractor: _____ P.O.: _____
 Engineer: _____
 Project Name: _____ Unit Tag: _____

208/230 VOLTAGE IS FACTORY TAPPED AT 208V Field connection required for 230V.

| SIZE | MODEL | VOLTS | PHASE | MIN. CRKT. AMP. | MAX. FUSE/HACR BRKR. | MAX. CRKT. BRKR. (CANADA) | LRA COMP. (EA) | RLA COMP. (EA) | BLOWER FLA | TOTAL FLA | BLOWER HP | | | |
|------|---------------|----------------|-------|-----------------|----------------------|---------------------------|----------------|----------------|------------|-----------|-----------|------|------|-----|
| 006 | HS/HL | 208/230 265 | 1 | 3.8 | 15 | 15 | 15.9 | 2.8 | 0.34 | 3.14 | 1/25 | | | |
| | | | | 3.6 | 15 | 15 | 22.2 | 2.6 | 0.34 | 2.91 | 1/25 | | | |
| 009 | HS/HL & VS/VL | 208/230 265 | 3 | 10.5 | 15 | 15 | 40.0 | 7.0 | 0.90 | 7.90 | 3/8 | | | |
| | | | | 5.2 | 15 | 15 | 20.0 | 3.5 | 0.80 | 1.33 | 1/10 | | | |
| | | | | 4.8 | 15 | 15 | 16.0 | 3.1 | 0.90 | 4.00 | 1/6 | | | |
| 012 | HS/HL & VS/VL | 208/230 265 | 1 | 6.3 | 15 | 15 | 31.2 | 2.6 | 0.80 | 5.40 | 1/10 | | | |
| | | | | 6.2 | 15 | 15 | 27.0 | 2.2 | 0.90 | 5.10 | 1/10 | | | |
| 015 | HS/HL & VS/VL | 208/230 265 | 1 | 7.5 | 15 | 15 | 31.2 | 5.5 | 0.92 | 6.42 | 1/10 | | | |
| | | | | 6.8 | 15 | 15 | 27.0 | 4.8 | 0.83 | 5.63 | 1/10 | | | |
| 019 | HS/HL & VS/VL | 208/230 265 | 1 | 11.0 | 15 | 15 | 43.0 | 7.6 | 1.20 | 8.80 | 1/8 | | | |
| | | | | 10.2 | 15 | 15 | 45.0 | 6.6 | 0.90 | 7.50 | 1/8 | | | |
| 024 | HS/HL & VS/VL | 208/230 265 | 3 | 12.5 | 15 | 20 | 49.0 | 8.1 | 1.50 | 9.60 | 1/4 | | | |
| | | | | 10.9 | 15 | 15 | 46.5 | 7.3 | 1.30 | 8.20 | 1/4 | | | |
| 030 | HS/HL & VS/VL | 208/230 265 | 1 | 15.6 | 25 | 25 | 67.0 | 10.2 | 1.60 | 11.8 | 1/4 | | | |
| | | | | 13.7 | 20 | 20 | 38.0 | 9.2 | 1.30 | 10.5 | 1/4 | | | |
| | | | | 10.0 | 15 | 20 | 50.0 | 9.7 | 1.50 | 8.20 | 1/4 | | | |
| | | | | 9.1 | 15 | 15 | 35.0 | 8.4 | 0.85 | 4.50 | 1/4 | | | |
| 036 | HS/HL & VS/VL | 208/230 265 | 1 | 22.6 | 35 | 35 | 78.0 | 15.5 | 3.20 | 18.7 | 1/2 | | | |
| | | | | 20.8 | 30 | 30 | 73.8 | 14.1 | 3.20 | 17.3 | 1/2 | | | |
| | | | | 16.5 | 25 | 25 | 59.5 | 10.6 | 3.20 | 13.8 | 1/2 | | | |
| | | | | 7.6 | 15 | 15 | 30.7 | 4.6 | 1.80 | 6.40 | 1/2 | | | |
| 042 | HS/HL & VS/VL | 208/230 | 1 | 25.3 | 40 | 35 | 83.0 | 17.7 | 3.20 | 20.8 | 1/2 | | | |
| | | | | HS/HL & VS/VL | 208/230 | 3 | 17.7 | 25 | 25 | 65.1 | 11.6 | 3.20 | 19.7 | 1/2 |
| 048 | HS/HL & VS/VL | 208/230 | 1 | 32.3 | 50 | 40 | 95.4 | 21.5 | 5.40 | 26.9 | 3/4 | | | |
| | | | | HS/HL & VS/VL | 208/230 | 3 | 32.7 | 35 | 35 | 82.0 | 13.8 | 5.44 | 19.2 | 3/4 |
| | | | | HS/HL & VS/VL | 160 | 3 | 10.9 | 15 | 15 | 41.0 | 6.9 | 2.70 | 9.10 | 3/4 |
| | | | | HS/HL & VS/VL | 575 | 3 | 8.5 | 15 | 15 | 36.0 | 5.3 | 3.20 | 6.50 | 3/4 |
| 600 | HS/HL & VS/VL | 208/230 | 1 | 40.3 | 60 | 50 | 135.0 | 37.6 | 5.80 | 37.4 | 1 | | | |
| | | | | HS/HL & VS/VL | 208/230 | 3 | 26.0 | 40 | 40 | 90.0 | 16.3 | 5.80 | 21.9 | 1 |
| | | | | HS/HL & VS/VL | 480 | 3 | 12.3 | 15 | 20 | 45.0 | 7.7 | 2.60 | 10.3 | 1 |
| | | | | HS/HL & VS/VL | 575 | 3 | 10.5 | 15 | 20 | 36.0 | 6.4 | 3.20 | 8.70 | 1 |

HS/HL Models 072-120 (Belt Driven Units)

| SIZE | MODEL | VOLTS | PHASE | MAX. MIN. CRKT. AMP. | MAX. FUSE/HACR BRKR. | CRKT. BRKR. (CANADA) | LRA COMP. (EA) | RLA COMP. (EA) | BLOWER FLA | TOTAL FLA | BLOWER HP | | | |
|------|-------|----------------|-------|----------------------|----------------------|----------------------|----------------|----------------|------------|-----------|-----------|-----|------|-------|
| 072 | HS/HL | 208/230 460 | 3 | 29.8 | 40 | 40 | 38.0(2) | 10.6(2) | 5.7 | 26.9 | 1 1/2 | | | |
| | | | | 13.0 | 15 | 15 | 30.7(2) | 4.6(2) | 2.6 | 11.8 | 1 1/2 | | | |
| | | | | HS/HL | 208/230 | 3 | 31.5 | 40 | 40 | 38.0(2) | 10.6(2) | 7.5 | 28.7 | 2* |
| | | | | HS/HL | 460 | 3 | 12.8 | 20 | 25 | 30.7(2) | 4.6(2) | 3.4 | 12.5 | 2* |
| 056 | HS/HL | 208/230 460 | 3 | 36.8 | 50 | 50 | 82.0(2) | 13.8(2) | 5.7 | 33.3 | 1 1/2 | | | |
| | | | | 18.6 | 25 | 25 | 41.0(2) | 6.9(2) | 2.6 | 15.4 | 1 1/2 | | | |
| | | | | HS/HL | 208/230 | 3 | 13.4 | 15 | 15 | 34.0(2) | 5.1(2) | 1.9 | 12.1 | 1 1/2 |
| | | | | HS/HL | 208/230 | 3 | 38.0 | 50 | 50 | 82.0(2) | 13.8(2) | 7.5 | 35.1 | 2* |
| | | | | HS/HL | 460 | 3 | 19.4 | 25 | 25 | 41.0(2) | 6.9(2) | 3.4 | 17.2 | 2* |
| | | | | HS/HL | 575 | 3 | 14.0 | 20 | 20 | 36.0(2) | 5.1(2) | 2.5 | 12.7 | 2* |
| 120 | HS/HL | 208/230 460 | 3 | 43.7 | 60 | 60 | 90.0(2) | 16.1(2) | 7.5 | 39.7 | 2 | | | |
| | | | | 20.7 | 25 | 25 | 45.0(2) | 7.7(2) | 3.4 | 18.8 | 2 | | | |
| | | | | HS/HL | 208/230 | 3 | 16.8 | 20 | 20 | 36.0(2) | 6.4(2) | 2.5 | 13.2 | 2 |
| | | | | HS/HL | 208/230 | 3 | 44.8 | 60 | 60 | 90.0(2) | 16.1(2) | 8.6 | 40.8 | 2* |
| | | | | HS/HL | 460 | 3 | 21.6 | 30 | 30 | 45.0(2) | 7.7(2) | 4.3 | 19.7 | 2* |
| | | | | HS/HL | 575 | 3 | 17.8 | 20 | 25 | 36.0(2) | 6.4(2) | 3.1 | 16.2 | 2* |

* OPTIONAL

ClimateMaster works continually to improve its products. As a result, the design and specifications of each product at the time of order may be changed without notice and may not be as described herein. Please contact ClimateMaster's Customer Service Department at 1-800-725-0990 for specific information on the current design and specifications. Electrical and other information within this literature may not always correspond to the data on the basis of any discrepancy between the parties, but the master of ClimateMaster shall prevail in the absence of any such dispute.

| | |
|---------------------|-----------------|
| Contractor: _____ | P.O.: _____ |
| Engineer: _____ | |
| Project Name: _____ | Unit Tag: _____ |

| Size | Model | Ship Wt. Lb. | Oper. Wt. Lb. | Face Area Sq. Ft. | Return-Air Heat Exchanger | | No. of Fins/ Inch | Refrig. Charge R-22/R-410a | No. of Coils | High Volt. Knockout In. | Blower Diameter | Blower Width |
|------|-------|--------------|---------------|-------------------|---------------------------|--------------------------|-------------------|----------------------------|--------------|-------------------------|-----------------|--------------|
| | | | | | No. of Rows Deep | Copper Tube Sz. (OD) in. | | | | | | |
| 005 | HS/SL | 118 | 108 | 0.97 | 2 | 3/8 | 11 | 12 | 1 | 7/8, 1-1/8 | 5.500 | 5.0 |
| 006 | HS/VS | 118 | 108 | 0.97 | 2 | 3/8 | 12 | 16 | 1 | 7/8, 1-1/8 | 5.500 | 5.0 |
| | HL/VL | 118 | 108 | 0.97 | 2 | 3/8 | 12 | 17 | 1 | 7/8, 1-1/8 | 5.500 | 5.0 |
| 012 | HS/VS | 123 | 117 | 0.97 | 2 | 3/8 | 12 | 16 | 1 | 7/8, 1-1/8 | 6.0 | 4.0 |
| | HL/VL | 123 | 117 | 0.97 | 2 | 3/8 | 12 | 17 | 1 | 7/8, 1-1/8 | 6.0 | 4.0 |
| 015 | HS/VS | 150 | 150 | 2.22 | 3 | 3/8 | 12 | 25 | 1 | 7/8, 1-1/8 | 6.0 | 5.0 |
| | HL/VL | 150 | 150 | 2.22 | 3 | 3/8 | 12 | 25 | 1 | 7/8, 1-1/8 | 6.0 | 5.0 |
| 019 | HS | 180 | 175 | 2.22 | 3 | 3/8 | 12 | 30 | 1 | 7/8, 1-1/8 | 7.625 | 7.0 |
| | VS | 180 | 175 | 2.22 | 3 | 3/8 | 12 | 30 | 1 | 7/8, 1-1/8 | 9.0 | 7.0 |
| | HL | 180 | 175 | 2.22 | 3 | 3/8 | 12 | 32 | 1 | 7/8, 1-1/8 | 7.625 | 7.0 |
| | VL | 180 | 175 | 2.22 | 3 | 3/8 | 12 | 32 | 1 | 7/8, 1-1/8 | 9.0 | 7.0 |
| 024 | HS/VS | 220 | 220 | 2.50 | 3 | 3/8 | 13 | 46 | 1 | 7/8, 1-1/8 | 9.0 | 7.0 |
| | HL/VL | 225 | 215 | 2.50 | 3 | 3/8 | 13 | 53 | 1 | 7/8, 1-1/8 | 9.0 | 7.0 |
| 030 | HS/VS | 230 | 220 | 2.50 | 3 | 3/8 | 13 | 44 | 1 | 7/8, 1-1/8 | 9.0 | 7.0 |
| | HL/VL | 235 | 214 | 2.50 | 3 | 3/8 | 13 | 51 | 1 | 7/8, 1-1/8 | 9.0 | 7.0 |
| 036 | HS/VS | 225 | 225 | 3.33 | 2 | 3/8 | 14 | 35 | 1 | 7/8, 1-1/8 | 9.0 | 7.0 |
| | HL/VL | 225 | 225 | 3.33 | 2 | 3/8 | 14 | 36 | 1 | 7/8, 1-1/8 | 9.0 | 7.0 |
| 042 | HS/VS | 240 | 230 | 3.33 | 3 | 3/8 | 12 | 50 | 1 | 7/8, 1-1/8 | 9.0 | 8.0 |
| | HL/VL | 240 | 230 | 3.33 | 3 | 3/8 | 12 | 44 | 1 | 7/8, 1-1/8 | 9.0 | 8.0 |
| 045 | HS/VS | 300 | 290 | 4.17 | 2 | 3/8 | 14 | 46 | 1 | 7/8 | 10.0 | 10.0 |
| | HL/VL | 300 | 290 | 4.17 | 3 | 3/8 | 14 | 42 | 1 | 7/8 | 10.0 | 10.0 |
| 060 | HS/VS | 357 | 347 | 4.17 | 3 | 3/8 | 14 | 32 | 1 | 7/8 | 11.0 | 10.0 |
| | HL/VL | 357 | 347 | 4.17 | 3 | 3/8 | 14 | 32 | 2 | 7/8 | 11.0 | 10.0 |
| 072 | HS | 655 | 615 | 6.56 | 2 | 3/8 | 14 | 38 | 2 | 1-3/8 | 12.0 | 11.0 |
| | HL | 655 | 615 | 6.56 | 2 | 3/8 | 14 | 36 | 2 | 1-3/8 | 12.0 | 11.0 |
| 096 | HS | 665 | 645 | 8.33 | 2 | 3/8 | 14 | 46 | 2 | 1-3/8 | 10.0(2) | 10.0(2) |
| | HL | 665 | 645 | 8.33 | 2 | 3/8 | 14 | 42 | 2 | 1-3/8 | 10.0(2) | 10.0(2) |
| 120 | HS | 675 | 655 | 8.33 | 3 | 3/8 | 14 | 82 | 2 | 1-3/8 | 11.0(2) | 10.0(2) |
| | HL | 675 | 655 | 8.33 | 3 | 3/8 | 14 | 82 | 2 | 1-3/8 | 11.0(2) | 10.0(2) |

Operating Limits

Environment

This equipment is designed for indoor installation ONLY.

Power Supply

A voltage variation of +/- 10% of nameplate utilization voltage is acceptable. Three-phase system imbalance shall not exceed 2%.

Starting Conditions

HS/VS Units:

HS/VS Units start and operate in an ambient of 40°F, with entering air at 40°F, with entering water at 70°F, with both air and water at the flow rates used in the ARI Standard 320-86 rating test, for initial start-up in winter.

HL/VL Units:

HL/VL Unit Heat Pumps will start and operate in an ambient of 40°F, with entering air at 40°F, with entering water at 40°F, with both air and water at the flow rates used in the ARI Standard 320-86 rating test, for initial start-up in winter.

Notes: These are not normal or continuous operating conditions. It is assumed that such a start-up is for the purpose of bringing the building space up to occupancy temperature.

ClimateMaster works continually to improve its products. As a result, the design and specifications on each product on the date of order may be changed without notice and may not be as described herein. Please contact ClimateMaster Customer Service Department at 1-800-748-6000 for specific information on the current design and specifications. Statements and other information contained herein are not claims, warranties and do not form the basis of any contract between the parties, but are merely ClimateMaster's opinion or recommendation of its products.

Air and Water Limits

| | HS/VS | | HL/VL | |
|---------------------------|----------|---------|----------|---------|
| | Cooling | Heating | Cooling | Heating |
| Min. Ambient Air | 50°F | 50°F | 40°F | 40°F |
| Rated Ambient Air | 80°F | 70°F | 80°F | 70°F |
| Max. Ambient Air | 100°F | 85°F | 100°F | 85°F |
| Min. Entering Air | 50°F | 50°F | 50°F | 40°F |
| Rated Entering Air, db/wb | 80/67°F | 70°F | 80/67°F | 70°F |
| Max. Entering Air, db/wb | 100/83°F | 80°F | 100/83°F | 80°F |

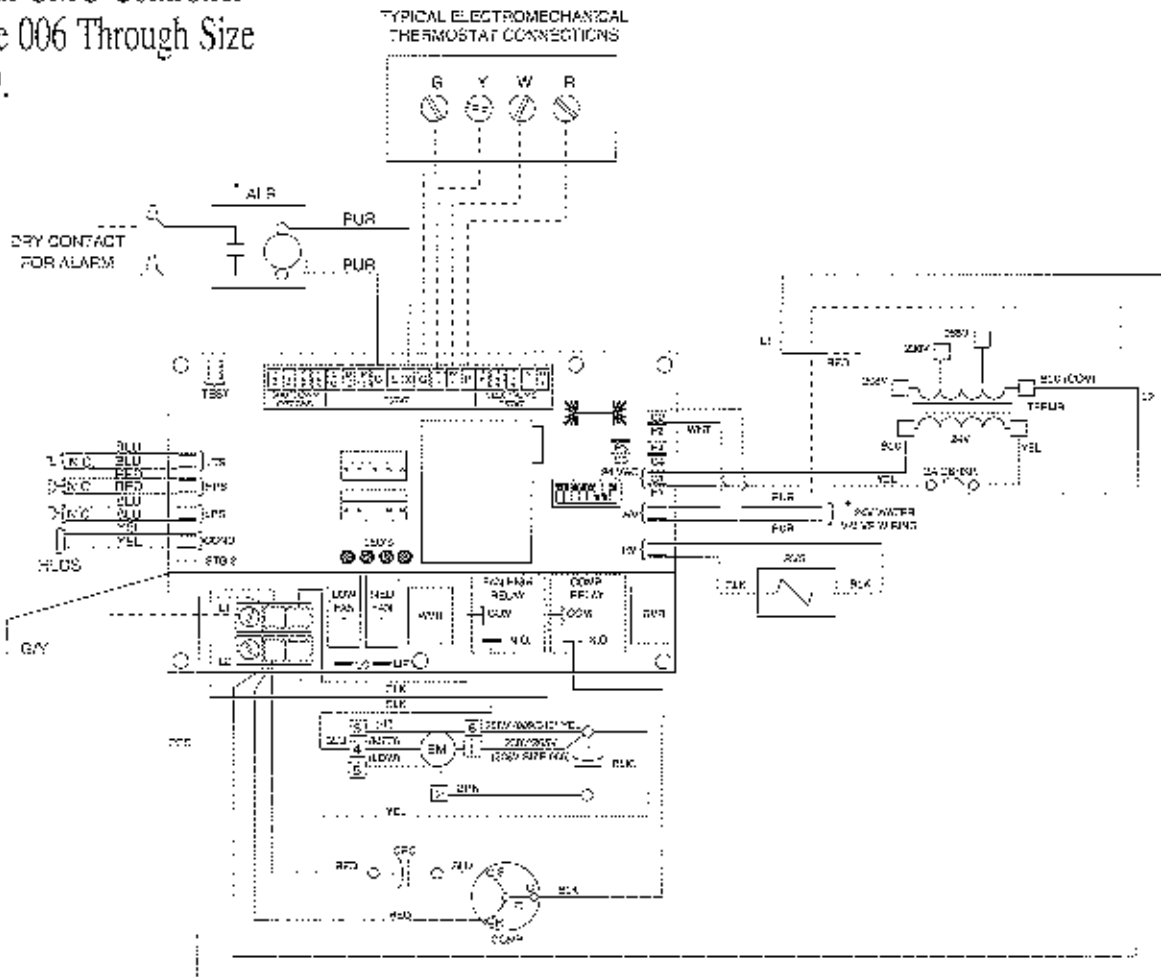
Water Limits

| | HS/VS | | HL/VL | |
|-----------------------|---------|---------|---------|---------|
| | Cooling | Heating | Cooling | Heating |
| Min. Entering Water | 55°F | 55°F | 40°F | 40°F |
| Normal Entering Water | 85°F | 70°F | 85°F | 70°F |
| Max. Entering Water | 110°F | 90°F | 110°F | 90°F |

NOTES: (A) Minimum Air and Water conditions can only be used in ARI flow tests.
(B) Only one maximum or minimum value may be used with HS/VS Units. All other parameters must be at normal conditions. HL/VL Units may have up to two values at the same or minimum with all other parameters at normal conditions.

| | |
|---------------------|-----------------|
| Contractor: _____ | P.O.: _____ |
| Engineer: _____ | |
| Project Name: _____ | Unit Tag: _____ |

Typical Single Phase
Wiring Diagram for
HS/HL, VS/VL Units
With CMC Controller
Size 006 Through Size
019.



ClimateMaster works continually to improve its products. As a result, the design and specifications of each product at the time of order may be changed without notice and may not be as described herein. Please contact ClimateMaster's Customer Service Department at 1-800-745-6000 for specific information on the current design and specifications. Statements and other information contained herein are not express warranties and do not form the basis of any bargain between the parties, but are merely ClimateMaster's opinion or commendation of its products.



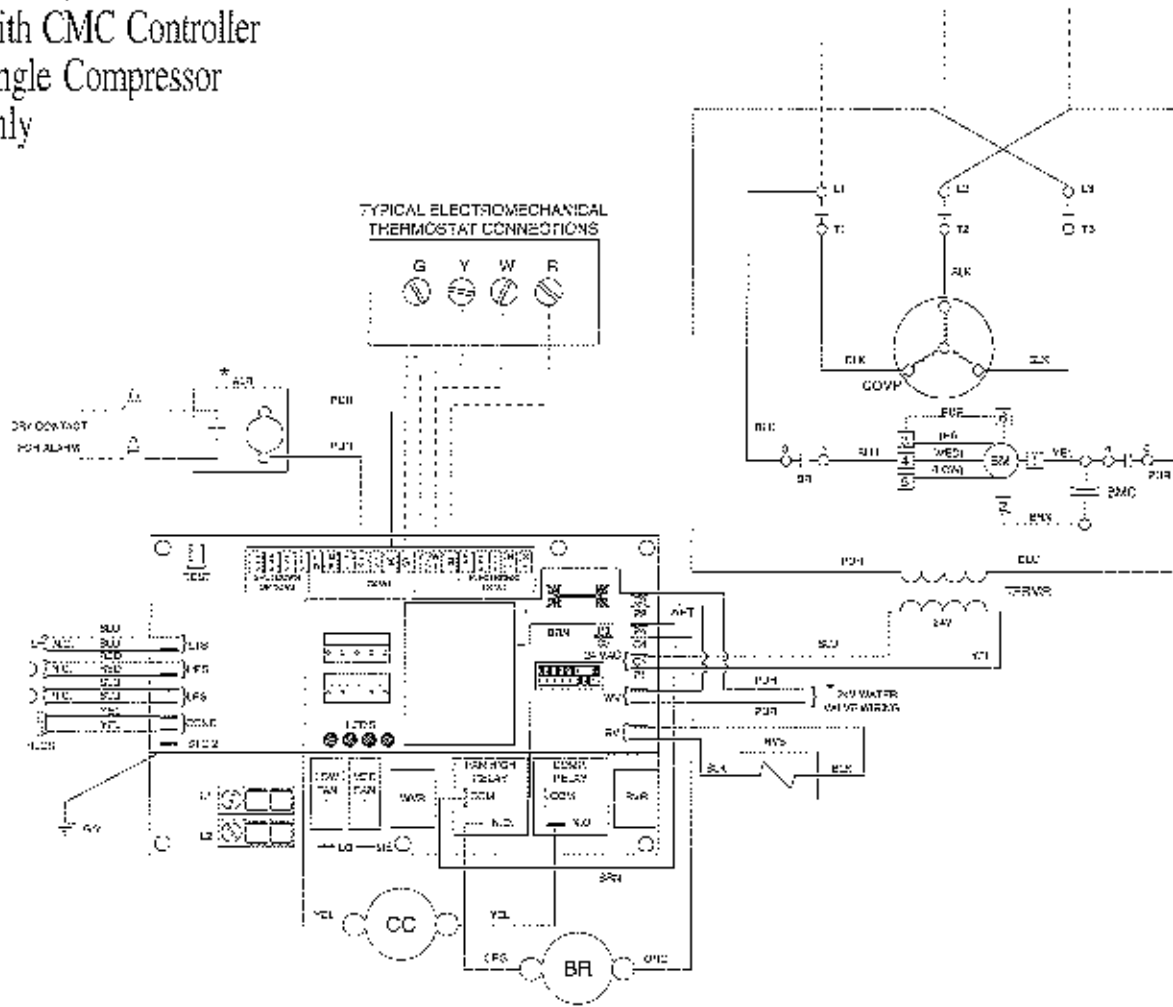
CLIMATEMASTER™

TYPICAL WIRING DIAGRAM

Submittal Data

| | |
|---------------------|-----------------|
| Contractor: _____ | P.O.: _____ |
| Engineer: _____ | |
| Project Name: _____ | Unit Tag: _____ |

Typical Three Phase
Wiring Diagram for
HS/HL, VS/VL Units
With CMC Controller
Single Compressor
Only

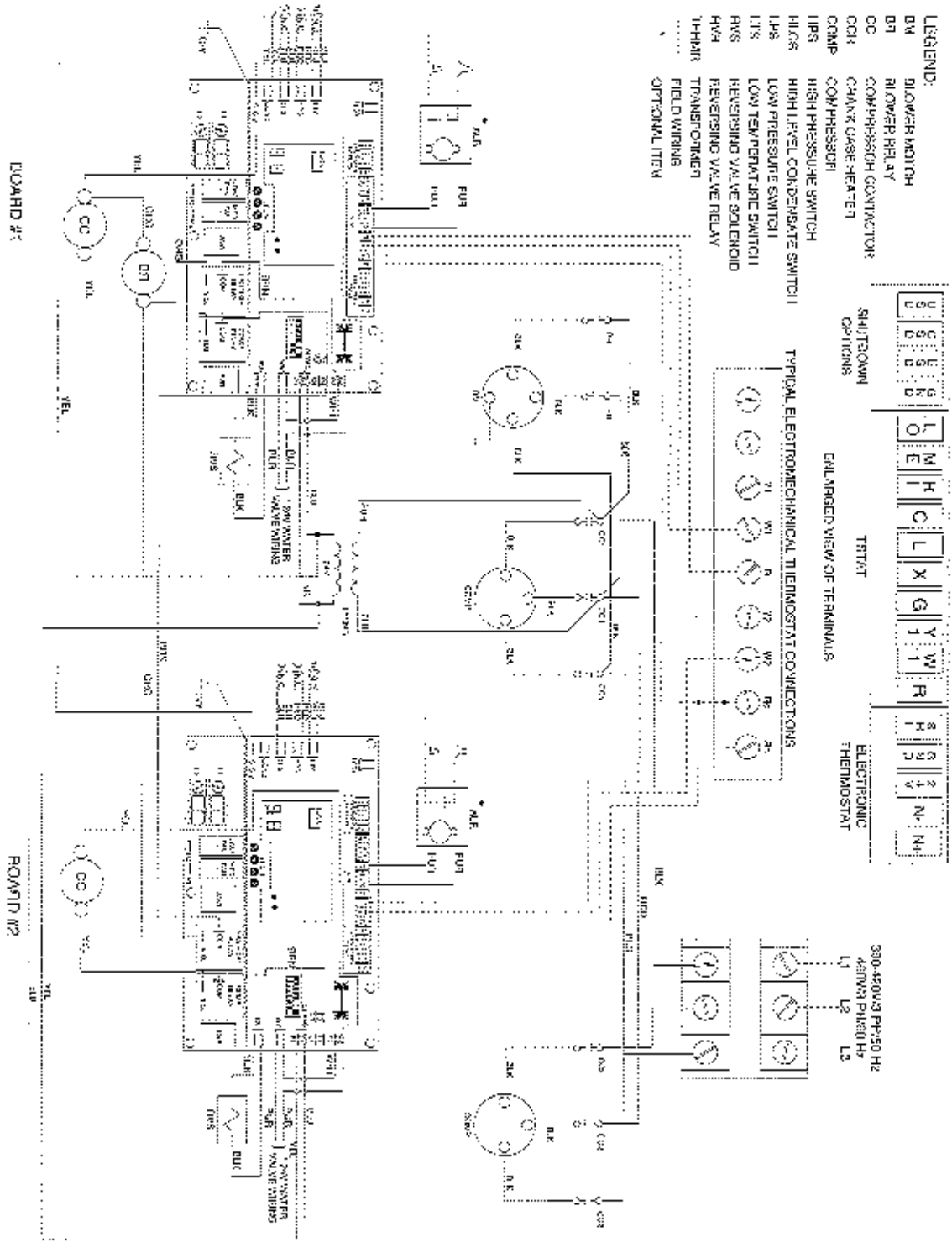


- LEGEND:
- BM Blower Motor
 - BMC Blower Motor Capacitor
 - CBK Circuit Breaker
 - COMP Compressor
 - HPS High Pressure Switch
 - HCLS High Level Condensate Sensor
 - LPS Low Pressure Switch
 - LTS Low Temperature Switch
 - RVS Reversing Valve Solenoid
 - RVR Reversing Valve Relay
 - TRFMR Transformer
 - Field Wiring
 - * Optional Item
 - BR Blower Relay
 - CC Compressor Contactor

ClimateMaster warrants consistently to improve its products. As a result, the design and specifications of each product at the time of order may be changed without notice and may not be as described herein. Please contact ClimateMaster's Customer Service Department at 1-800-775-8000 for specific information on the current design and specifications. Statements and other information contained herein are not express warranties and do not form the basis of any bargain between the parties, but are merely ClimateMaster's opinion or commendation of its products.

Contractor: _____ P.O.: _____
 Engineer: _____
 Project Name: _____ Unit Tag: _____

Typical ThreePhase, Two Compressor Unit Wiring Diagram
 For HS/HL (Size 72, 96, 120) Three Phase, 60hz, 208/460/575 Volt



ClimateMaster works continually to improve its products. As a result, the design and specifications of each product at the time of order may be changed without notice and may not be as described herein. Please contact ClimateMaster's Customer Service Department at 1-800-749-6900 for specific information on the current design and specifications. Some parts and other materials obtained herein are not express warranties and do not form the basis of any design approval or order, but are merely ClimateMaster's opinion or recommendation of its products.

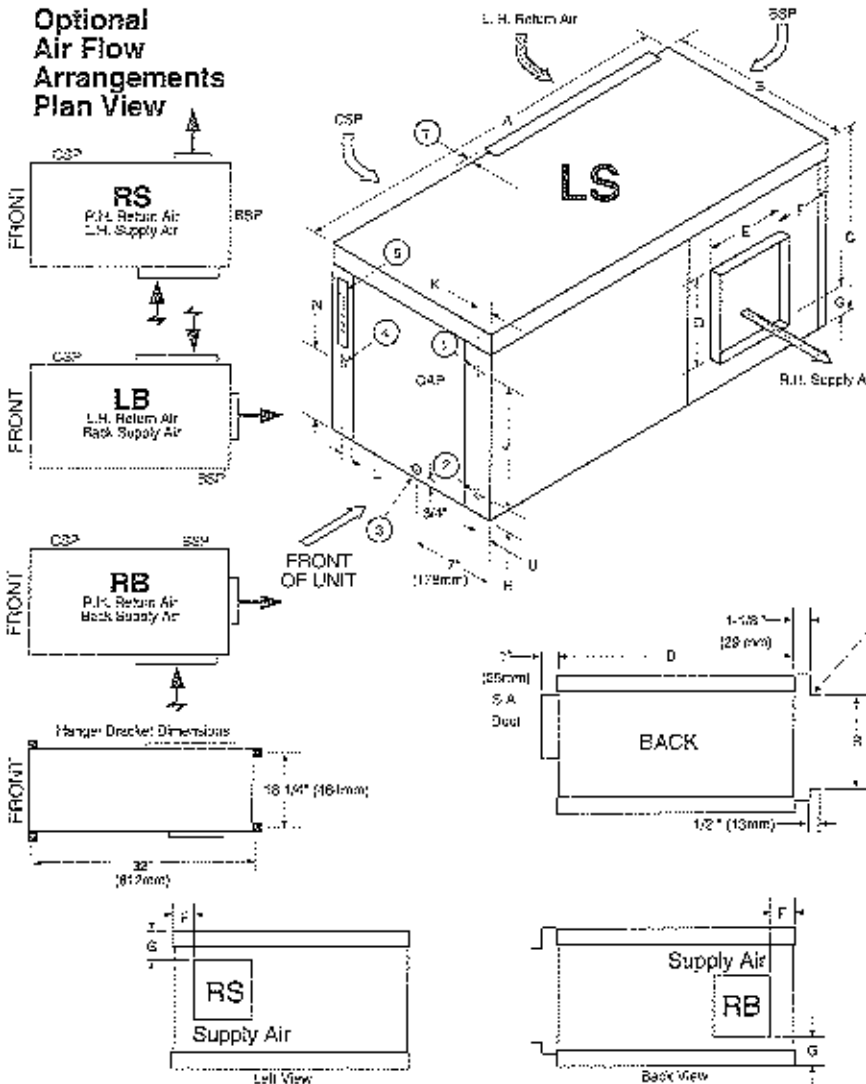


DIMENSIONS
HS/HL 006/009/012

Submittal Data

| | |
|---------------------|-----------------|
| Contractor: _____ | P.O.: _____ |
| Engineer: _____ | |
| Project Name: _____ | Unit Tag: _____ |

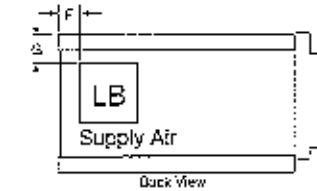
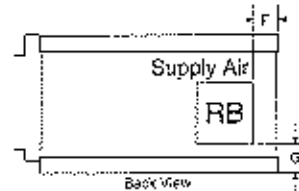
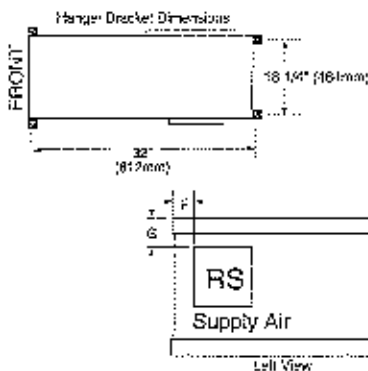
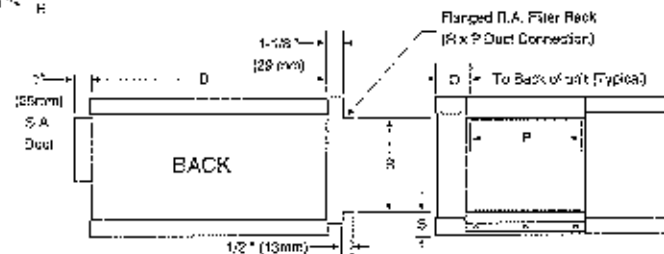
Optional Air Flow Arrangements Plan View



1. Water outlet 1/2" FPT
 2. Water inlet 1/2" FPT
 3. Condensate Drain 3/4" FPT
 4. High Voltage Access 7/8" X 1-1/8" K.O.
 5. 24 Volt Terminal Board
- CAP - Control Access Panel
BSP - Blower Service Panel
CSP - Compressor Service Panel

Nominal Filter Size
10" x 16" x 1"
(245mm x 406mm x 25mm)

Return Air Duct Size
8-1/4" High x 14" Wide
(210mm High x 356mm wide)



Supply Air Duct locations (LS shown on main drawing)

NOTE: Air flow pattern can be converted in the field by interchanging the blower discharge panel (w/blower assembly attached) with the blower service panel. Only LS to LB and RS to RB can be converted.

| MODEL | | A | B | C | D | E | F | G | H | J | K | L | M | N | O | P | R | S | T | U | V |
|-------|--------|-----|-----|--------|-------|-----|-----|-----|-------|-------|----|----|----|-------|----|-----|-----|-----|-------|----|-------|
| 006 | INCHES | 34 | 20 | 11 1/8 | 5 3/4 | 8 | 7 | 4 | 2 3/8 | 6 1/8 | 1 | 1 | 1 | 4 3/4 | 2 | 15 | 9 | 1/2 | 1 1/8 | 1 | 4 1/2 |
| | MM | 854 | 508 | 283 | 146 | 203 | 178 | 120 | 60 | 156 | 25 | 25 | 25 | 121 | 51 | 381 | 229 | 13 | 31 | 25 | 114 |
| 009 | INCHES | 34 | 20 | 11 1/8 | 5 3/4 | 8 | 7 | 4 | 2 3/8 | 6 1/8 | 1 | 1 | 1 | 4 3/4 | 2 | 15 | 9 | 1/2 | 1 1/8 | 1 | 4 1/2 |
| | MM | 854 | 508 | 283 | 146 | 203 | 178 | 120 | 60 | 156 | 25 | 25 | 25 | 121 | 51 | 381 | 229 | 13 | 31 | 25 | 114 |
| 012 | INCHES | 34 | 20 | 11 1/8 | 5 3/4 | 8 | 7 | 4 | 2 3/8 | 6 1/8 | 1 | 1 | 1 | 4 3/4 | 2 | 15 | 9 | 1/2 | 1 1/8 | 1 | 4 1/2 |
| | MM | 854 | 508 | 283 | 146 | 203 | 178 | 120 | 60 | 156 | 25 | 25 | 25 | 121 | 51 | 381 | 229 | 13 | 31 | 25 | 114 |

ClimateMaster works continually to improve its products. As a result, the design and specifications of each product at the time of order may be changed without notice and may not be as described herein. Please contact ClimateMaster's Customer Service Department at 1-800-746-6600 for specific information on the current design and specifications. Statements and other information contained herein are for reference only and do not form the basis of any bargain between the parties, but are merely ClimateMaster's attempt to communicate its products.

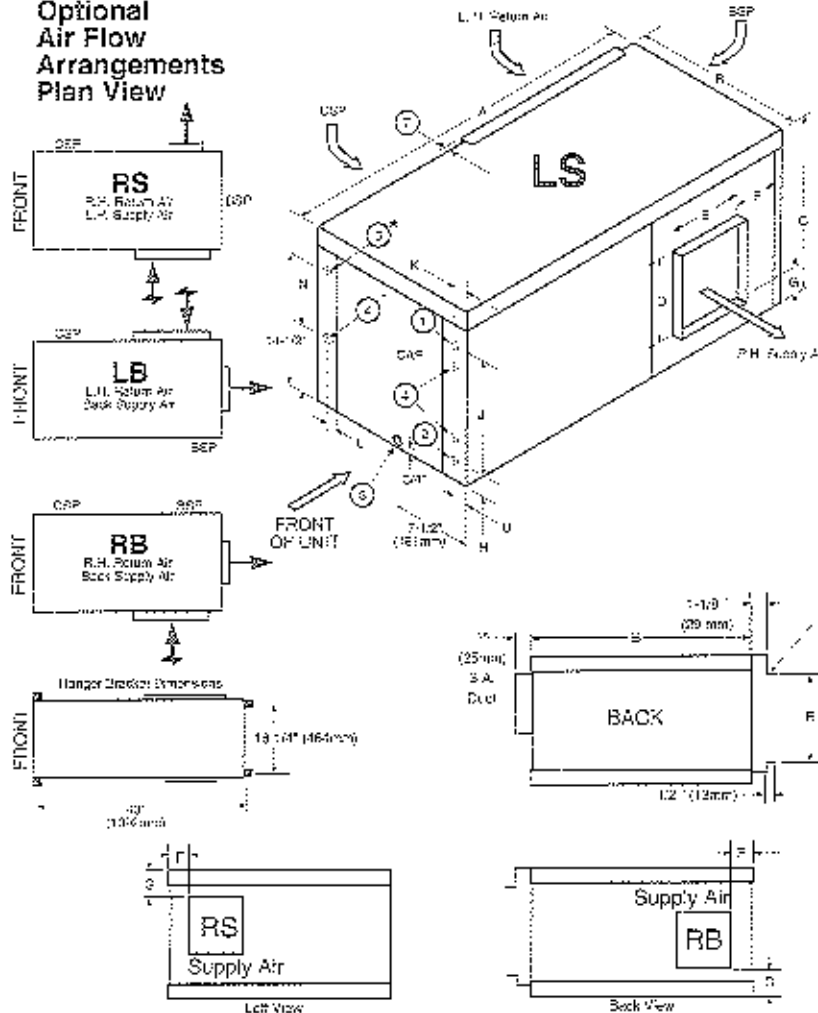


DIMENSIONS
HS/HL 015/019/024/030

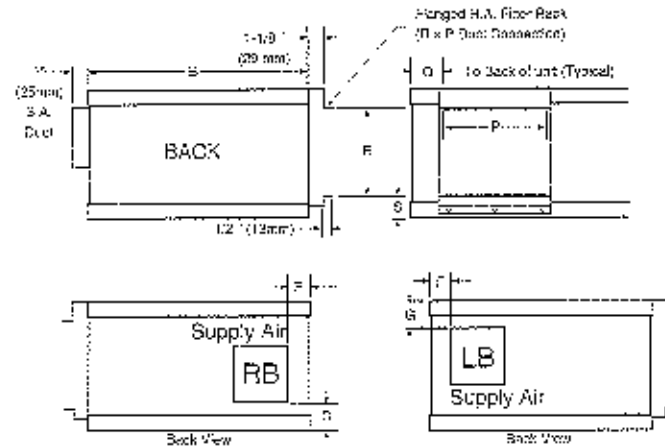
Submittal Data

Contractor: _____ P.O.: _____
 Engineer: _____
 Project Name: _____ Unit Tag: _____

Optional Air Flow Arrangements Plan View



1. Water outlet
 2. Water inlet
 3. Condensate Drain
 4. High Voltage Access
 5. Low Voltage Access
 6. HWG Outlet Sz 024 - 10-3/8" from bottom of unit
HWG Outlet Sz 030 - 12-5/8" from bottom of unit
HWG Inlet Sz 024 - 3-5/8" from bottom of unit
HWG Inlet Sz 030 - 3-5/8" from bottom of unit
- CAP - Control Access Panel
 BSP - Blower Service Panel
 CSP - Compressor Service Panel
 Nominal Filter Size: Unit Size 015-019
 18" x 22" x 1"
 (406mm x 559mm x 25mm)
 Unit Size 024-030
 18" x 22" x 1"
 (457mm x 559mm x 25mm)
 P.A. Duct Dimensions: Unit Size 015-019
 14-1/2" H x 20" W
 (368 mm H x 508 mm W)
 Unit Size 024-030
 16-1/2" H x 20" W
 (419 mm H x 508 mm W)
- *OPTIONAL ELECTRICAL ACCESS ON LEFT SIDE OF CORNER POST.



Supply Air Duct locations (LS shown on main drawing)

NOTE: Air flow pattern can be converted in the field by interchanging the blower discharge panel (w/blower assembly attached) with the blower service panel. Only LS to LB and RS to RB can be converted.

| MODEL | | A | B | C | D | E | F | G | H | J | K | L | M | N | O | P | R | S | T | U | V |
|-------|--------|------|-----|-----|--------|-----|-------|-------|-------|--------|-------|----|-------|-------|----|--------|--------|-------|-------|-----|-------|
| 015 | INCHES | 43 | 20 | 17 | 7 3/4 | 10 | 6 3/4 | 5 1/4 | 1 3/4 | 13 | 2 3/8 | | 4 1/4 | 7 1/4 | 2 | 20 1/2 | 15 1/8 | 1 1/2 | 1 1/8 | 4 | 5 |
| | MM | 1092 | 508 | 432 | 197 | 254 | 171 | 133 | 32 | 305 | 60 | 25 | 108 | 184 | 51 | 521 | 375 | 13 | 29 | 102 | 127 |
| 019 | INCHES | 45 | 20 | 17 | 10 1/4 | 7 | 6 1/2 | 5 1/4 | 1 3/4 | 11 | 2 3/8 | | 1 1/4 | 7 1/4 | 2 | 20 1/2 | 15 1/8 | 1 1/2 | 1 1/8 | 4 | 6 1/2 |
| | MM | 1143 | 508 | 432 | 260 | 178 | 165 | 133 | 32 | 279 | 60 | 25 | 32 | 184 | 51 | 521 | 375 | 13 | 29 | 102 | 165 |
| 024 | INCHES | 40 | 20 | 15 | 10 | 9 | 5 1/4 | 5 1/4 | 1 3/4 | 11 | 2 3/8 | | 4 | 7 1/4 | 2 | 20 1/2 | 17 3/8 | 1 1/2 | 1 1/8 | 4 | 5 1/4 |
| | MM | 1016 | 508 | 432 | 254 | 229 | 133 | 133 | 32 | 277 | 60 | 25 | 102 | 184 | 51 | 531 | 435 | 13 | 29 | 102 | 133 |
| 030 | INCHES | 43 | 20 | 19 | 10 | 9 | 5 1/4 | 5 1/4 | 1 1/4 | 13 1/4 | 2 3/8 | | 4 | 7 1/4 | 2 | 20 1/2 | 17 3/8 | 1 1/2 | 1 1/8 | 4 | 5 1/4 |
| | MM | 1092 | 508 | 483 | 254 | 229 | 133 | 133 | 32 | 337 | 60 | 25 | 102 | 184 | 51 | 531 | 435 | 13 | 29 | 102 | 133 |

ClimateMaster works continually to improve its products. As a result, the design and specifications of each product at the time of order may be changed without notice and may not be as described herein. Please contact ClimateMaster's Customer Service Department at 1-408-749-0000 for specific information on the current design and specifications. Statements and other information contained herein do not supersede warranties and do not form the basis of any contract between the parties. List and model of ClimateMaster's product or components of its products.

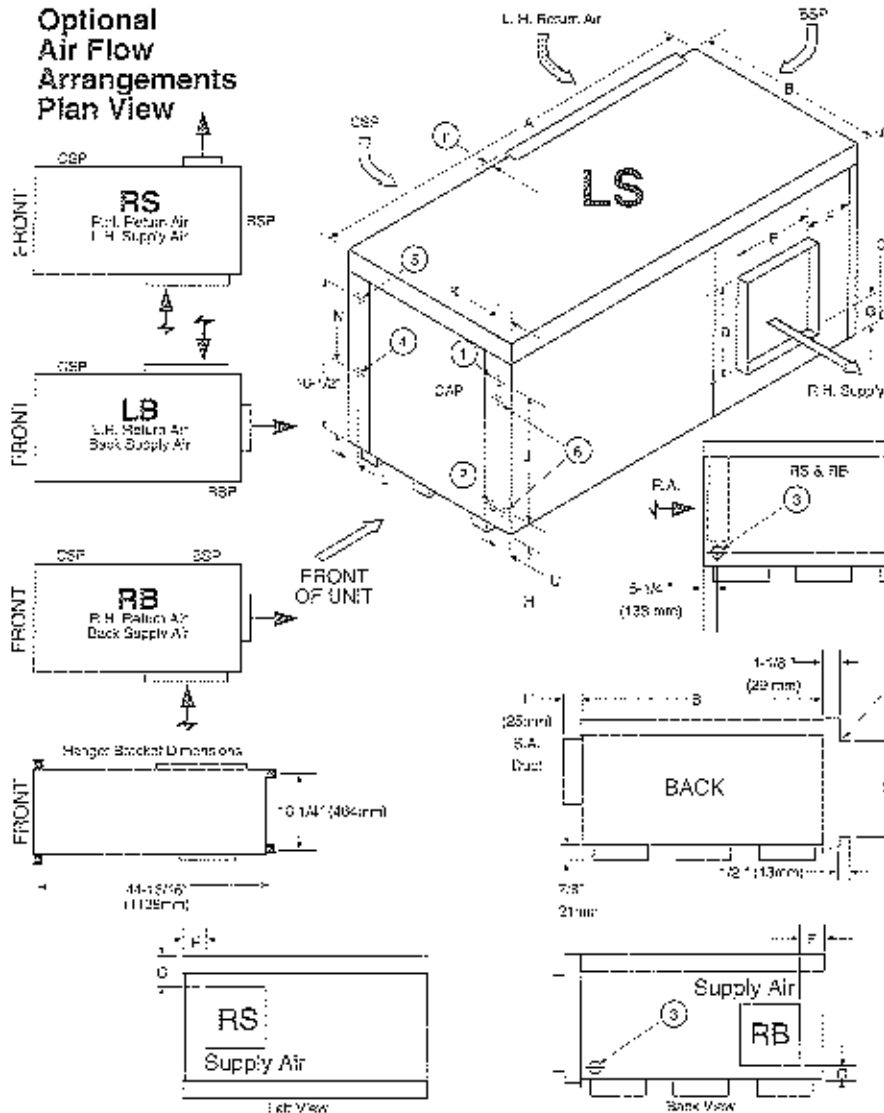


DIMENSIONS
HS/HL 036/042

Submittal Data

| | |
|---------------------|-----------------|
| Contractor: _____ | P.O.: _____ |
| Engineer: _____ | _____ |
| Project Name: _____ | Unit Tag: _____ |

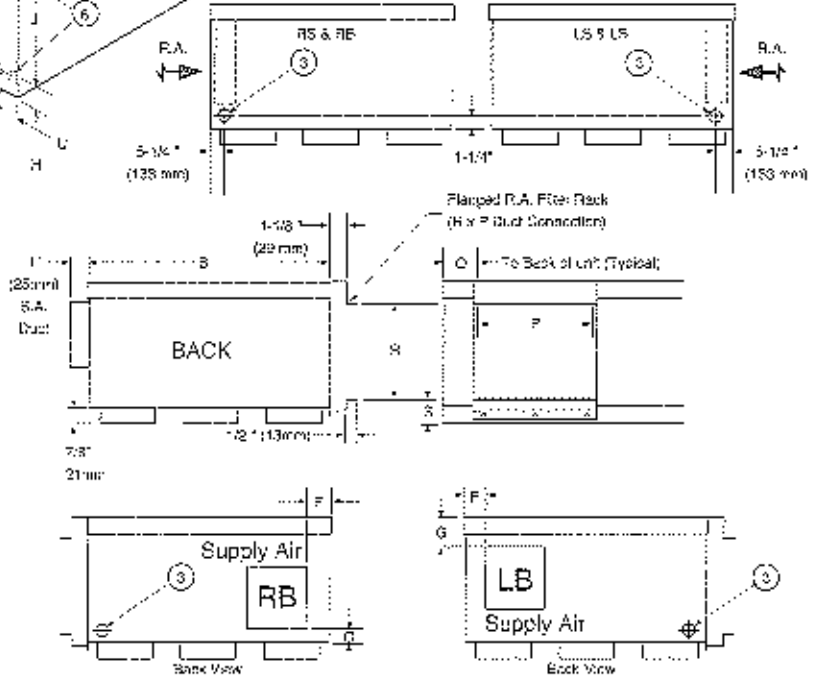
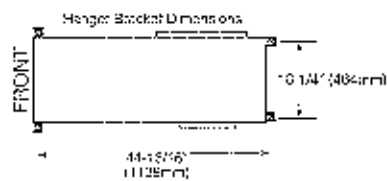
Optional Air Flow Arrangements Plan View



1. Water outlet 3/4" FPT
 2. Water inlet 3/4" FPT
 3. Condensate Drain 3/4" FPT
 4. High Voltage Access 7/8" X 1-1/8" K.O.
 5. Low Voltage Access K.O.
 6. HWG Outlet - 12-1/4" from bottom of unit
HWG Inlet - 3-3/4" from bottom of unit
- CAP - Control Access Panel
BSP - Blower Service Panel
CSP - Compressor Service Panel

Nominal Filter Size
20" x 25" x 1"
(508mm x 635mm x 25mm)

Return Air Duct Size
18-1/2" High x 23-3/4" Wide
(470mm High x 603mm Wide)



Supply Air Duct locations (LS shown on main drawing)

NOTE: Air flow pattern can be converted in the field by interchanging the blower discharge panel (w/blower assembly attached) with the blower service panel. Only LS to LB and RS to RB can be converted.

| MODEL | | A | B | C | D | E | F | G | H | J | K | L | N | O | P | R | S | T | U | V |
|-------|--------|------|-----|-----|--------|--------|-------|-------|-------|--------|-------|----|--------|-------|--------|--------|-------|-------|-------|-------|
| 036 | INCHES | 47 | 28 | 21 | 10.508 | 9.375 | 7.102 | 3.104 | 5.708 | 15.208 | 2.104 | 1 | 11 | 2.504 | 22.504 | 18.508 | 1.304 | 1.108 | 3.304 | 3.104 |
| | MM | 1194 | 508 | 533 | 264 | 238 | 181 | 83 | 88 | 340 | 57 | 25 | 278 | 70 | 578 | 467 | 44 | 31 | 95 | 83 |
| 042 | INCHES | 47 | 30 | 21 | 10.508 | 10.304 | 6 | 3.104 | 5.508 | 15.308 | 2.104 | 1 | 10.102 | 2.504 | 22.504 | 18.508 | 1.304 | 1.108 | 3.304 | 2.304 |
| | MM | 1194 | 508 | 533 | 264 | 273 | 152 | 83 | 93 | 340 | 57 | 25 | 267 | 70 | 578 | 467 | 44 | 31 | 95 | 67 |

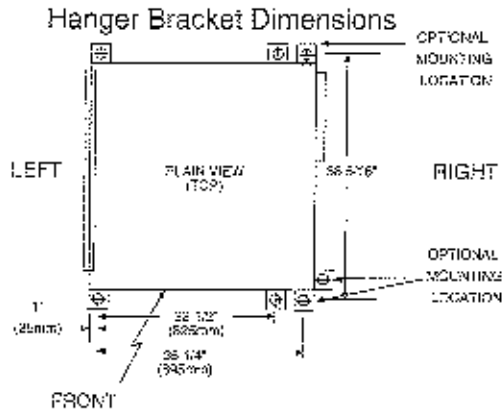
ClimateMaster makes every effort to improve its products. As a result, the design and specifications of each product at the time of publication may be changed without notice and may not be as distributed herein. Please contact ClimateMaster's Customer Service Department at 1-800-745-8000 for specific information on the current design and specifications. Statements and other information contained herein are not warranties and do not form the basis of any contracts between the parties. Such are merely ClimateMaster's best estimate of its products.



DIMENSIONS
HS/HL 048/060

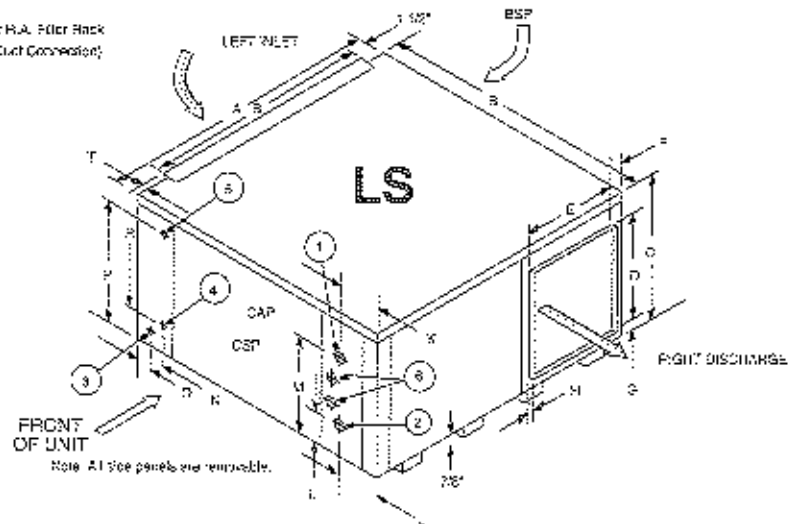
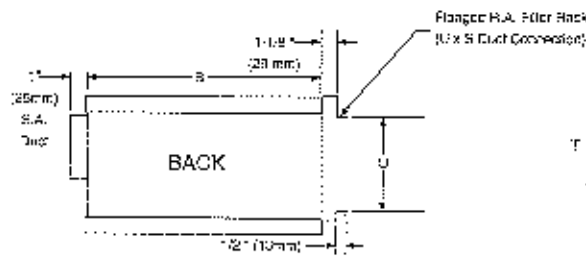
Submittal Data

| | |
|---------------------|-----------------|
| Contractor: _____ | P.O.: _____ |
| Engineer: _____ | |
| Project Name: _____ | Unit Tag: _____ |



1. Water Outlet 1" FPT
 2. Water Inlet 1" FPT
 3. Condensate Drain 3/4" FPT
 4. High Voltage Access 7/8" x 1 1/8" DiA., 22mm x 29mm DiA.
 5. Low Voltage Access 1/2" DiA., 13mm DiA.
 6. HWG Outlet - 14 3/8" from bottom of unit
HWG Inlet - 10 1/2" from bottom of unit
- CAP - Control Access Panel
BSP - Blower Service Panel
CSP - Compressor Service Panel

Return Air Duct Size
18 1/4" High x 30" Wide
(464mm High x 762 Wide)
Nominal Filter Size
16" x 20" x 1" Two Required
(406mm High x 762mm Wide) Two Required

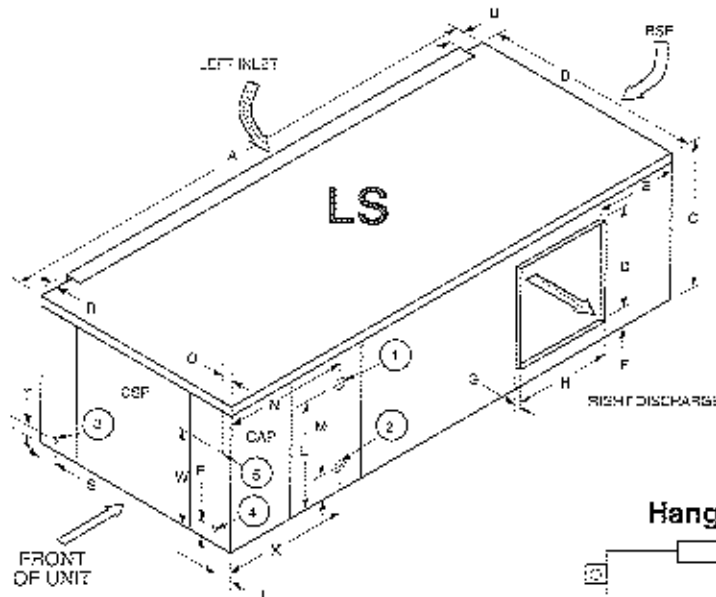


NOTE: Available in left return and straight blow only (LS) as shown.

| MODEL | | A | B | C | D | E | F | G | H | J | K | L | M | N | O | P | R | S | T | U | V |
|-------|--------|--------|--------|-----|-----|-----|-------|-------|----|-------|-------|-------|--------|-------|-------|--------|-------|-----|----|--------|-------|
| 048 | INCHES | 36 1/4 | 36 1/4 | 21 | 15 | 15 | 1 3/4 | 2 5/8 | 1 | 5 1/2 | 1 7/8 | 2 3/8 | 18 1/2 | 7 1/2 | 5 3/8 | 17 1/2 | 3 1/8 | 32 | 1 | 18 1/4 | 1 1/2 |
| | MM | 921 | 921 | 533 | 381 | 381 | 44 | 67 | 25 | 130 | 48 | 67 | 470 | 191 | 137 | 445 | 79 | 813 | 25 | 464 | 38 |
| 060 | INCHES | 36 1/4 | 36 1/4 | 21 | 15 | 15 | 1 3/4 | 2 5/8 | 1 | 5 1/8 | 1 7/8 | 2 3/8 | 18 1/2 | 7 1/2 | 5 3/8 | 17 1/2 | 3 1/8 | 32 | 1 | 18 1/4 | 1 1/2 |
| | MM | 921 | 921 | 533 | 381 | 381 | 44 | 67 | 25 | 130 | 48 | 67 | 470 | 191 | 137 | 445 | 79 | 813 | 25 | 464 | 38 |

ClimateMaster works continuously to improve its products. As a result, the design and specifications of each product at the time of order may be changed without notice and may not be as described herein. Please contact ClimateMaster's Customer Service Department at 1-408-748-0020 for specific information on the current design and specifications. Statements and other information contained herein are not warranties and do not limit the scope of any warranty between the parties. See also ClimateMaster's opinion or recommendation of its products.

| | |
|---------------------|-----------------|
| Contractor: _____ | P.O.: _____ |
| Engineer: _____ | _____ |
| Project Name: _____ | Unit Tag: _____ |



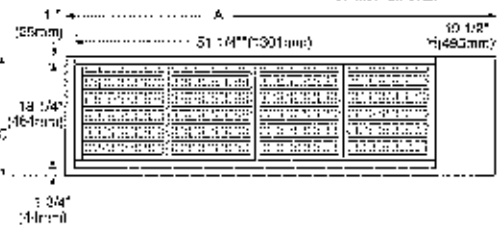
- 1. Water outlet 1 1/4" FPT
 - 2. Water inlet 1 1/4" FPT
 - 3. Condensate Drain 3/4" FPT
 - 4. High Voltage Access 1 3/8" K.O. (35mm)
 - 5. Low Voltage Access 1/2" DIA (13mm)
- CAP - Control Access Panel
BSP - Blower Service Panel
CSP - Compressor Service Panel

Return Air Duct Size
18 1/4" High x 51 1/4" Wide
(464mm High x 1314mm Wide)

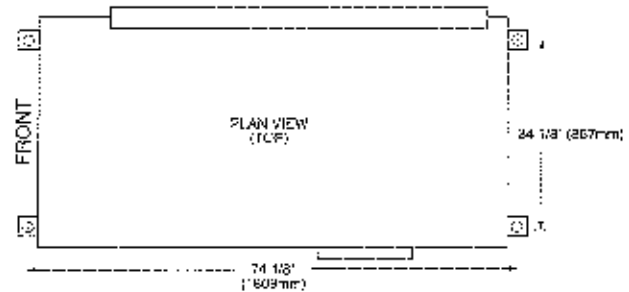
Nominal Filter Size
20" x 26 1/2" x 1" Two Required
(508mm x 673mm x 25mm) Two Required

Note: All side panels are removable.

FLANGED FILTER BACK
VIEW AT INLET
Note: Leaves one end of flange open for filter removal.



Hanger Bracket Dimensions

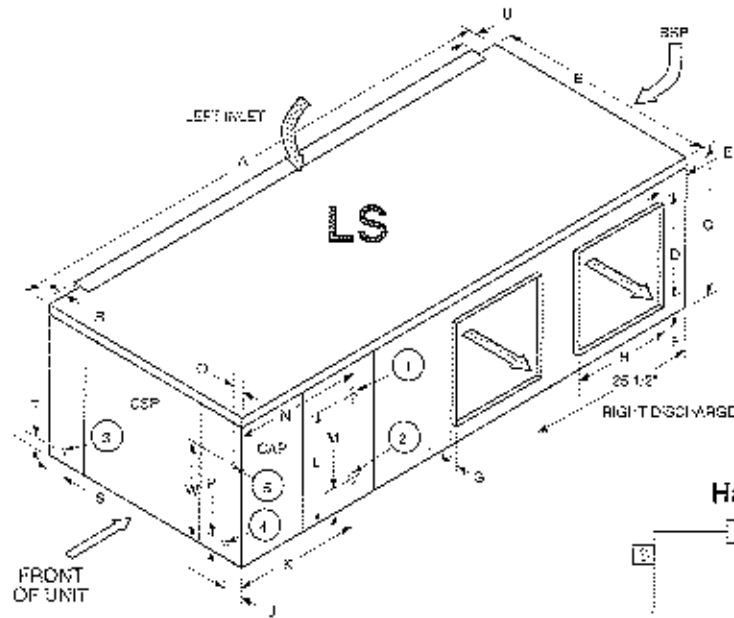


NOTE: Available in left return and straight blow only (LS) as shown.

| MODEL | | A | B | C | D | E | F | G | H | J | K | L | M | N | O | P | R | S | T | U | V |
|-------|--------|--------|-----|-----|-----|--------|----|----|-----|-------|--------|--------|-------|--------|----|-------|----|-------|-------|-------|--------|
| 072 | INCHES | 72 1/4 | 36 | 21 | 16 | 14 1/2 | 5 | 7 | 16 | 1 7/8 | 19 3/8 | 16 1/2 | 3 1/4 | 21 1/8 | 12 | 2 1/2 | 3 | 4 1/2 | 1 3/8 | 2 1/4 | 13 1/2 |
| | MM | 1835 | 914 | 533 | 406 | 368 | 76 | 25 | 406 | 48 | 502 | 419 | 83 | 540 | 15 | 64 | 25 | 118 | 35 | 59 | 343 |

ClimateMaster works continually to improve its products. As a result, the design and specifications of each product at the time of order may be changed without notice and may not be as described herein. Please contact ClimateMaster's Customer Service Department at 1-800-745-6900 for specific information on the current design and specifications. Elements and other information contained herein are not express warranties and do not form the basis of any bargain between the parties, but are merely ClimateMaster's opinion or course of dealing at its pleasure.

| | |
|---------------------|-----------------|
| Contractor: _____ | P.O.: _____ |
| Engineer: _____ | |
| Project Name: _____ | Unit Tag: _____ |



1. Water Outlet 1 1/4" FPT
 2. Water Inlet 1 1/4" FPT
 3. Condensate Drain 3/4" FPT
 4. High Voltage Access 1 3/8" K.O. (35mm)
 5. Low Voltage Access 1/2" DIA (13mm)
- CAP - Control Access Panel
 BSP - Blower Service Panel
 CSP - Compressor Service Panel

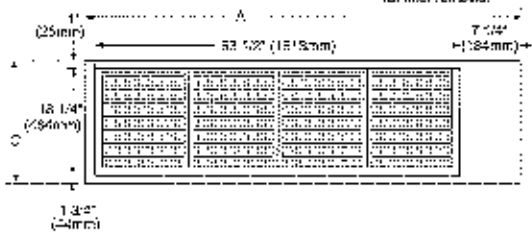
Return Air Duct Size
 18 1/4" High x 63 1/2" Wide
 (464mm x 1613mm Wide)

Nominal Filter Size
 16" x 20" x 1" Four Required
 (406mm x 508mm x 25mm) Four Required

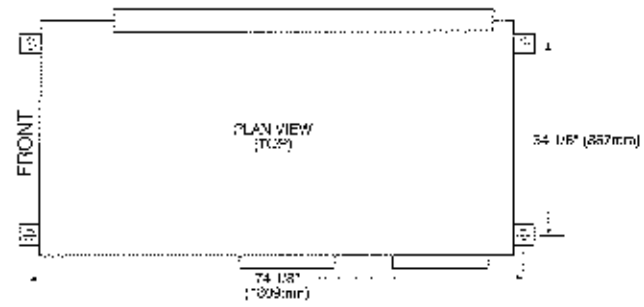
Note: All side panels are removable.

FLANGED FILTER BACK
 VIEW AT INLET

Note: Leave one end
 of duct coils open
 for filter removal.



Hanger Bracket Dimensions

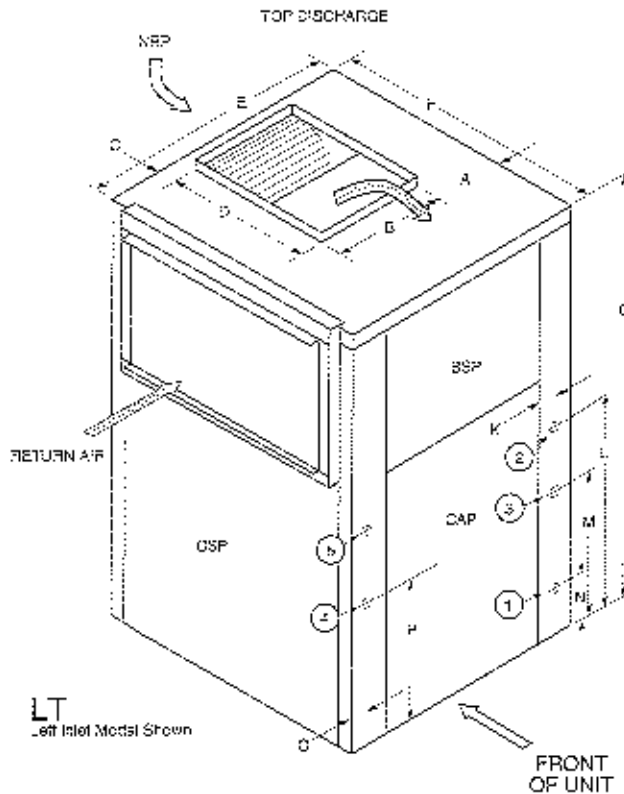


NOTE: Available in left return and straight blow only (LS) as shown.

| MODEL | | A | B | C | D | E | F | G | H | J | K | L | M | N | O | P | R | S | T | U | V |
|-------|--------|--------|--------|-----|--------|-------|-------|----|--------|-------|--------|--------|-------|--------|-------|-------|----|-------|-------|-------|--------|
| 096 | INCHES | 72 1/4 | 36 1/4 | 21 | 15 1/8 | 3 1/4 | 1 1/4 | 1 | 15 1/8 | 7 7/8 | 18 1/4 | 17 | 3 1/4 | 25 | 1 1/2 | 2 1/2 | 1 | 4 1/8 | 1 3/4 | 1 7/8 | 13 1/2 |
| | MM | 1835 | 921 | 533 | 384 | 85 | 33 | 25 | 384 | 48 | 454 | 432 | 83 | 508 | 13 | 64 | 25 | 103 | 22 | 48 | 343 |
| 120 | INCHES | 72 1/4 | 36 1/4 | 21 | 15 1/8 | 2 5/8 | 4 1/4 | 1 | 15 1/8 | 1 7/8 | 18 1/4 | 12 5/8 | 3 1/4 | 23 1/4 | 1 1/2 | 2 1/2 | 1 | 4 1/8 | 1 3/4 | 1 7/8 | 13 1/2 |
| | MM | 1835 | 921 | 533 | 384 | 67 | 108 | 25 | 384 | 48 | 464 | 473 | 83 | 565 | 13 | 64 | 25 | 103 | 32 | 48 | 343 |

ClimateMaster works continually to improve its products. As a result, the design and specifications of each product at the time of issue may be changed without notice and they do not be described herein. Please contact ClimateMaster's Customer Service Department at 1-800-748-8999 for specific information on the current design and specifications. Statements and other information contained herein are not express warranties and do not form the basis of any contract between the parties, but are merely ClimateMaster's opinion or commendation of its product.

| | |
|---------------------|-----------------|
| Contractor: _____ | P.O.: _____ |
| Engineer: _____ | |
| Project Name: _____ | Unit Tag: _____ |



1. Water Inlet 1/2" FPT
2. Water Outlet 1/2" FPT
3. Condensate Drain 3/4" FPT
4. High Voltage Access 7/8" X 1-1/8" K.O.
(22mm x 29mm K.O.)
5. Low Voltage Access 1/2" DIA
(13mm DIA)

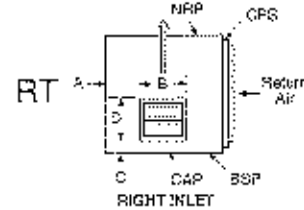
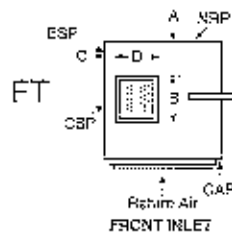
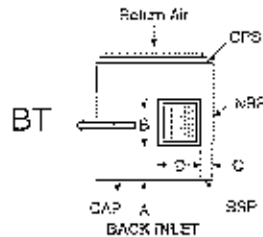
CAP - Control Access Panel
 BSP - Blower Service Panel
 CSP - Compressor Service Panel
 NRP - Non-Removable Panel

Return Air Duct Size
 9" High x 15-1/8" Wide
 (229mm High x 384mm Wide)

Nominal Filter Size
 10" x 16" x 1"
 (254mm x 406mm x 25mm)

Air Flow Direction →

Optional Air Flow Patterns



FRONT

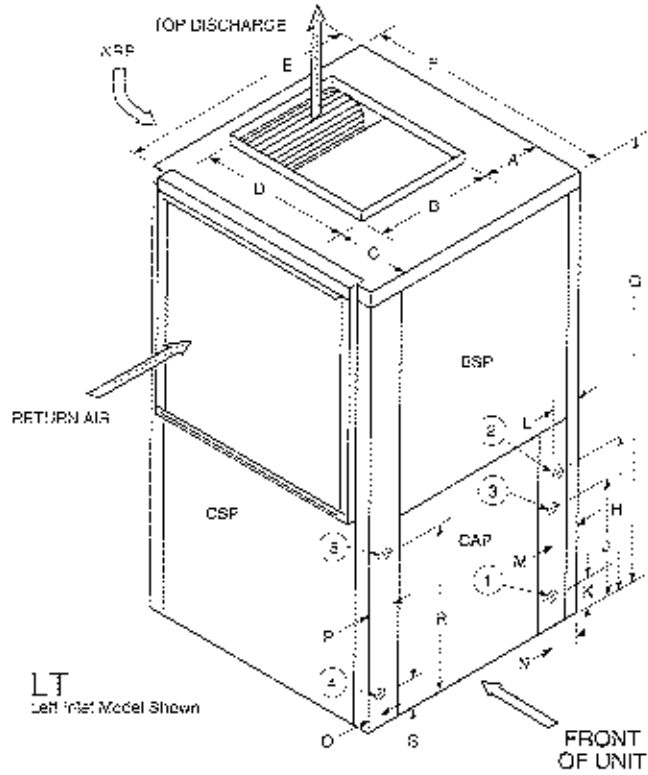
FRONT

FRONT

| MODEL | | A | B | C | D | E | F | G | K | L | M | N | O | P |
|-------|--------|-------|-------|-------|-------|--------|--------|--------|----|-------|-------|-------|----|-------|
| 009 | INCHES | 3 7/8 | 9 7/8 | 1 5/8 | 7 | 19 1/8 | 19 1/8 | 24 1/8 | 1 | 8 3/4 | 5 5/8 | 2 3/8 | 1 | 4 1/2 |
| | MM | 98 | 251 | 41 | 178 | 486 | 486 | 615 | 25 | 222 | 143 | 60 | 25 | 114 |
| 012 | INCHES | 3 7/8 | 9 7/8 | 1 5/8 | 7 3/8 | 19 1/8 | 19 1/8 | 24 1/8 | 1 | 8 3/4 | 5 5/8 | 2 3/8 | 1 | 4 1/2 |
| | MM | 98 | 251 | 41 | 187 | 486 | 486 | 615 | 25 | 222 | 143 | 60 | 25 | 114 |

ClimateMaster works continually to improve its products. As a result, the design or specifications of each product at the time of order may be changed without notice and may not be as described herein. Please contact ClimateMaster's Customer Service Department at 1-800-745-8299 for specific information on the current design and specifications. Statements and other information contained herein are not express warranties and do not form the basis of any contract between the parties, but are merely ClimateMaster's opinion or commendation of its products.

| | |
|---------------------|-----------------|
| Contractor: _____ | P.O.: _____ |
| Engineer: _____ | |
| Project Name: _____ | Unit Tag: _____ |



1. Water Inlet 1/2" FPT
2. Water Outlet 1/2" FPT
3. Condensate Drain 3/4" FPT
4. High Voltage Access 7/8" X 1 1/8" K.O. (22mm x 29mm K.O.)
5. Low Voltage Access 1/2" DIA (13mm DIA)

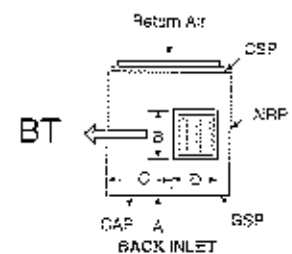
CAP - Control Access Panel
BSP - Blower Service Panel
CSP - Compressor Service Panel
NRP - Non-Removable Panel

Return Air Duct Size
18 3/4" High x 18 1/8" Wide
(476mm High x 460mm Wide)

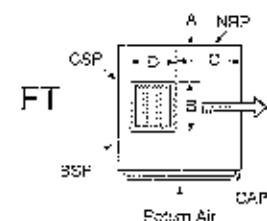
Nominal Filter Size
20" x 20" x 1"
(508mm x 508mm x 25mm)

Air Flow Direction →

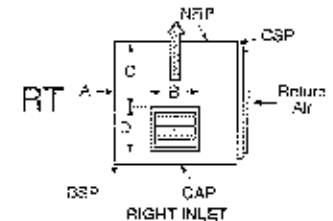
Optional Air Flow Patterns



FRONT



FRONT

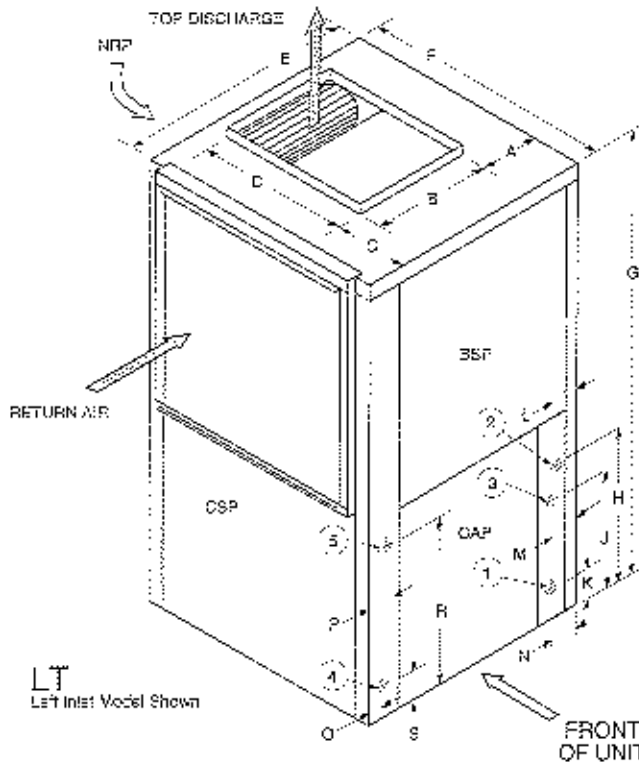


FRONT

| MODEL | | A | B | C | D | E | F | G | H | J | K | L | M | N | O | P | R | S |
|-------|--------|-------|-----|-------|--------|--------|--------|--------|--------|-------|-------|-------|-----|-------|-------|-------|--------|-------|
| 015 | INCHES | 5 1/2 | 10 | 9 1/4 | 7 5/8 | 21 1/8 | 21 1/8 | 37 1/2 | 11 7/8 | 9 3/4 | 1 3/8 | 3 7/8 | 6 | 5 3/8 | 1 1/8 | 1 5/8 | 11 1/2 | 7 1/4 |
| | MM | 140 | 254 | 235 | 194 | 537 | 537 | 953 | 302 | 248 | 48 | 98 | 152 | 137 | 29 | 41 | 288 | 184 |
| 019 | INCHES | 6 | 9 | 5 5/8 | 12 5/8 | 31 1/8 | 31 1/8 | 37 1/2 | 12 7/8 | 9 3/4 | 1 3/8 | 3 7/8 | 6 | 5 3/8 | 1 1/8 | 1 5/8 | 11 1/2 | 7 1/4 |
| | MM | 152 | 229 | 143 | 323 | 537 | 537 | 953 | 327 | 248 | 48 | 98 | 152 | 137 | 29 | 41 | 288 | 184 |

ClimateMaster works continually to improve its products. As a result, the design and specifications of each product at the time of order may be changed without notice and may not be as described herein. Please contact ClimateMaster's Customer Service Department at 1-408-748-6920 for specific information on the current design and specifications. Statements and other information contained herein are not express warranties and do not form the basis of any design unless otherwise stated. ClimateMaster's opinion and communication of its products.

| | |
|---------------------|-----------------|
| Contractor: _____ | P.O.: _____ |
| Engineer: _____ | |
| Project Name: _____ | Unit Tag: _____ |



1. Water Inlet 3/4" FPT
2. Water Outlet 3/4" FPT
3. Condensate Drain 3/4" FPT
4. High Voltage Access 7/8" X 1 1/8" K.O. (22mm x 29mm K.O.)
5. Low Voltage Access 1/2" DIA (13mm DIA)

CAP - Control Access Panel
BSP - Blower Service Panel
CSP - Compressor Service Panel
NRP - Non-Removable Panel

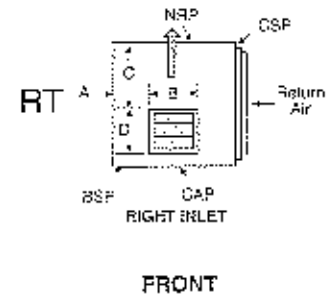
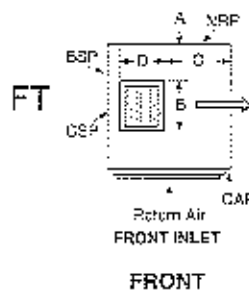
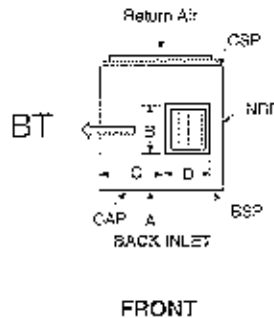
Return Air Duct Size
18 1/2" High x 20" Wide
(470mm High x 502mm Wide)

Nominal Filter Size
20" x 20" x 1"
(508mm x 508mm x 25mm)

Air Flow Direction →

LT
Left Inlet Model Shown

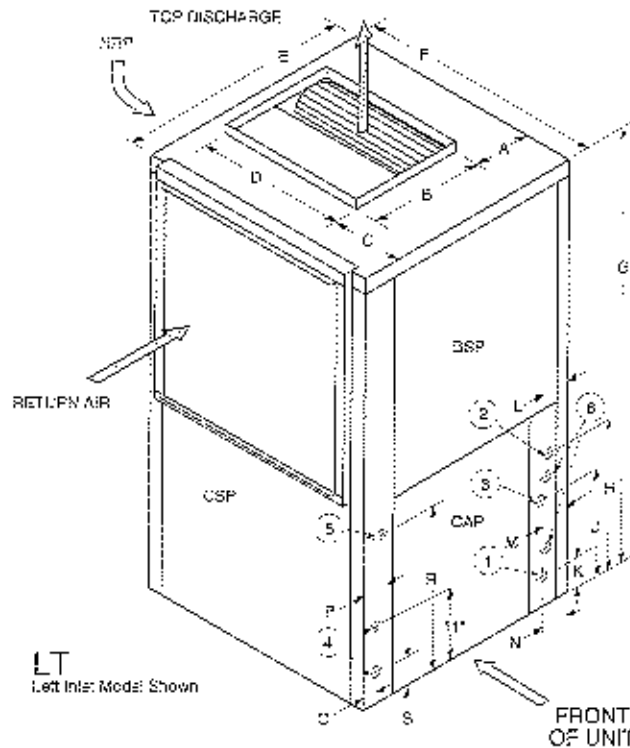
Optional Air Flow Patterns



| MODEL | | A | B | C | D | E | F | G | H | J | K | L | M | N | O | P | R | S |
|-------|--------|-------|--------|-------|--------|--------|--------|--------|--------|-------|-------|-------|-----|-------|-------|----|--------|-------|
| 024 | INCHES | 5.314 | 11.508 | 7.508 | 12.344 | 23.174 | 23.174 | 37.102 | 13.108 | 9.304 | 1.708 | 3.708 | 6 | 5.308 | 1.102 | 1 | 14.102 | 7.104 |
| | MM | 140 | 295 | 194 | 314 | 591 | 591 | 953 | 332 | 248 | 48 | 98 | 152 | 137 | 38 | 25 | 368 | 184 |
| 030 | INCHES | 5.314 | 11.508 | 7.508 | 12.344 | 23.174 | 23.174 | 37.102 | 15.104 | 9.304 | 1.708 | 3.708 | 6 | 5.308 | 1.102 | 1 | 14.102 | 7.104 |
| | MM | 140 | 295 | 194 | 314 | 591 | 591 | 953 | 387 | 248 | 48 | 98 | 152 | 137 | 38 | 25 | 368 | 184 |

ClimateMaster works continuously to improve its products. As a result, the design and specifications of each product at the time of purchase may be changed without notice and may not be as described herein. Please contact ClimateMaster's Customer Service Department at 1-800-748-5000 for specific information on the current design and specifications. Statements and other information contained herein are not intended to constitute a contract between the parties, but are merely ClimateMaster's opinion or representation of its products.

| | |
|---------------------|-----------------|
| Contractor: _____ | P.O.: _____ |
| Engineer: _____ | |
| Project Name: _____ | Unit Tag: _____ |



1. Water Inlet 3/4" FPT
2. Water Outlet 3/4" FPT
3. Condensate Drain 3/4" FPT
4. High Voltage Access 7/8" X 1 1/8" K.O. (22mm x 29mm K.O.)
5. Low Voltage Access 1/2" DIA (13mm DIA)

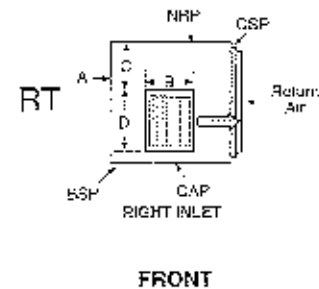
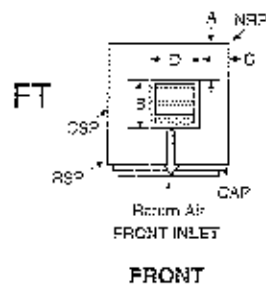
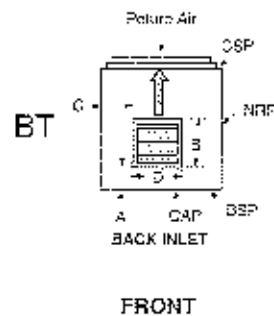
- HWG Optional 1/2" FPT
6. HWG Outlet - 16" from bottom of unit
 - HWG Inlet - 9 3/4" from bottom of unit
- CAP - Control Access Panel
BSP - Blower Service Panel
CSP - Compressor Service Panel
NRP - Non-Removable Panel

Return Air Duct Size
22 1/2" High x 23 3/4" Wide
(572mm High x 603mm Wide)

Nominal Filter Size
24" x 24" x 1"
(610mm x 610mm x 25mm)

Air Flow Direction →

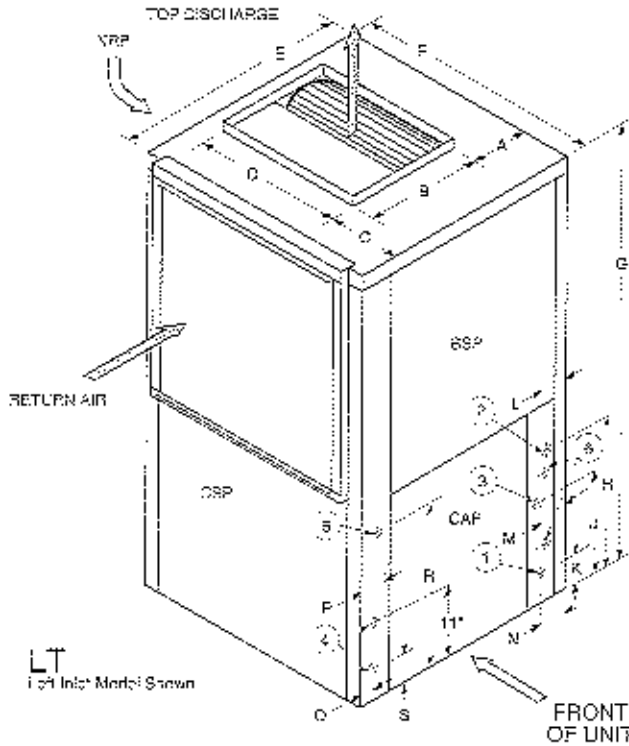
Optional Air Flow Patterns



| MODEL | | A | B | C | D | E | F | G | H | J | K | L | M | N | O | P | R | S |
|-------|--------|-------|--------|-------|--------|--------|--------|------|--------|-------|-------|-----|-------|-------|-------|-------|--------|-----|
| 036 | INCHES | 4 1/4 | 12 5/8 | 6 7/8 | 11 5/8 | 25 3/8 | 25 3/8 | 42 | 15 1/2 | 7 1/2 | 2 3/8 | 4 | 5 3/4 | 5 3/8 | 1 1/2 | 1 1/4 | 16 1/3 | 8 |
| | MM | 108 | 321 | 175 | 295 | 644 | 644 | 1062 | 394 | 191 | 60 | 102 | 146 | 137 | 38 | 32 | 419 | 203 |
| 042 | INCHES | 5 | 12 5/8 | 6 1/4 | 12 7/8 | 25 3/8 | 25 3/8 | 42 | 15 1/2 | 7 1/2 | 2 3/8 | 4 | 5 3/4 | 5 3/8 | 1 1/2 | 1 1/4 | 16 1/2 | 8 |
| | MM | 127 | 321 | 159 | 327 | 644 | 644 | 1062 | 394 | 191 | 60 | 102 | 146 | 137 | 38 | 32 | 419 | 203 |

ClimateMaster works continually to improve its products. As a result, the design and specifications of each product at the time of order may be changed without notice and may not be as described herein. Please contact ClimateMaster's Customer Service Department at 1-888-748-6000 for specific information on the current design and specifications. Statements and drawings herein constitute a contract and shall not be subject to any other terms or conditions of any order from the basis of any verbal agreement between the parties, but are merely ClimateMaster's opinion or recommendation of its products.

| | |
|---------------------|-----------------|
| Contractor: _____ | P.O.: _____ |
| Engineer: _____ | |
| Project Name: _____ | Unit Tag: _____ |



- 1. Water Inlet 1" FPT
- 2. Water Outlet 1" FPT
- 3. Condensate Drain 3/4" FPT
- 4. High Voltage Access 7/8" X 1 1/8" K.O.
(22mm x 29mm K.O.)
- 5. Low Voltage Access 1/2" DIA
(13mm DIA)

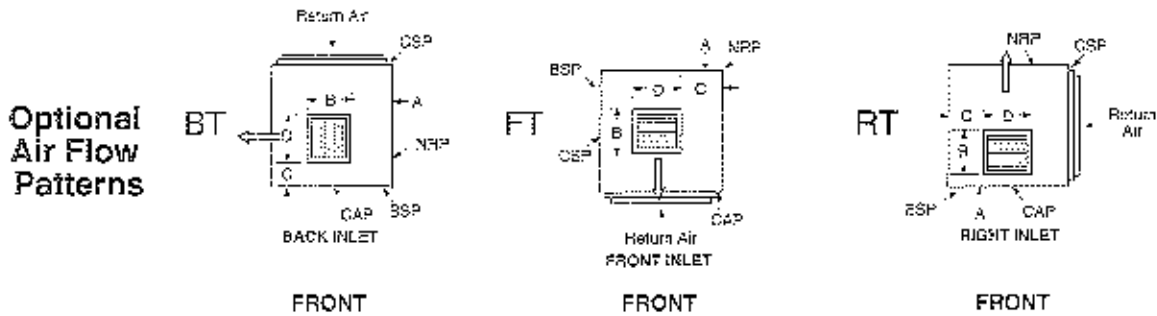
HWG Optional 1/2" FPT
6. HWG Outlet - 16" from bottom of unit
HWG Inlet- 9 3/4" from bottom of unit

CAP - Control Access Panel
BSP - Blower Service Panel
CSP - Compressor Service Panel
NRP - Non-Removable Panel

Return Air Duct Size
24" High x 28" Wide
(610mm High x 711mm Wide)

Nominal Filter Size
28" x 25" x 1"
(711mm x 635mm x 25mm)

Air Flow Direction →



| MODEL | | A | B | C | D | E | F | G | H | J | K | L | M | N | O | P | R | S |
|---------|--------|-------|--------|-------|--------|--------|--------|--------|--------|-------|-------|-------|-------|-------|----|-------|--------|-----|
| 048/060 | INCHES | 1 1/2 | 14 7/8 | 5 1/4 | 15 5/8 | 26 1/8 | 28 1/8 | 43 3/4 | 15 3/8 | 9 1/2 | 1 1/2 | 3 1/4 | 5 1/2 | 4 5/8 | 1 | 1 1/2 | 16 1/2 | 9 |
| | MM | 38 | 378 | 139 | 397 | 714 | 714 | 1109 | 391 | 241 | 38 | 83 | 143 | 137 | 25 | 38 | 418 | 229 |

ClimateMaster works constantly to improve its products. As a result, the design and specifications of each product at the time of order may be changed without notice and may not be as described herein. Please contact ClimateMaster's Customer Service Department at 1-408-748-5260 for specific information on the current design and specifications. Statements and other information contained herein are not express warranties and do not form the basis of any bargain between the parties, but are merely ClimateMaster's opinion or commendation of its products.