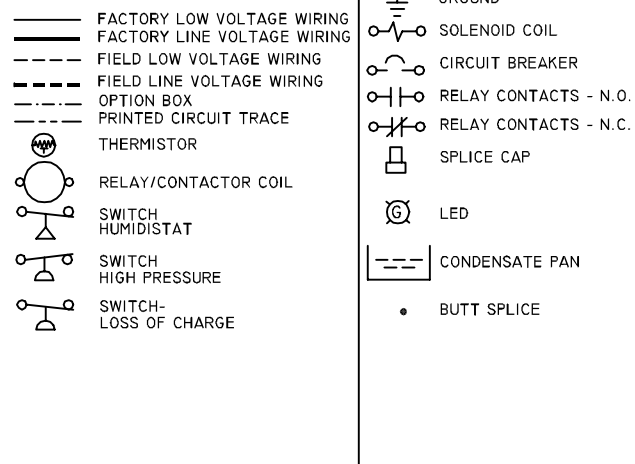




LEGEND



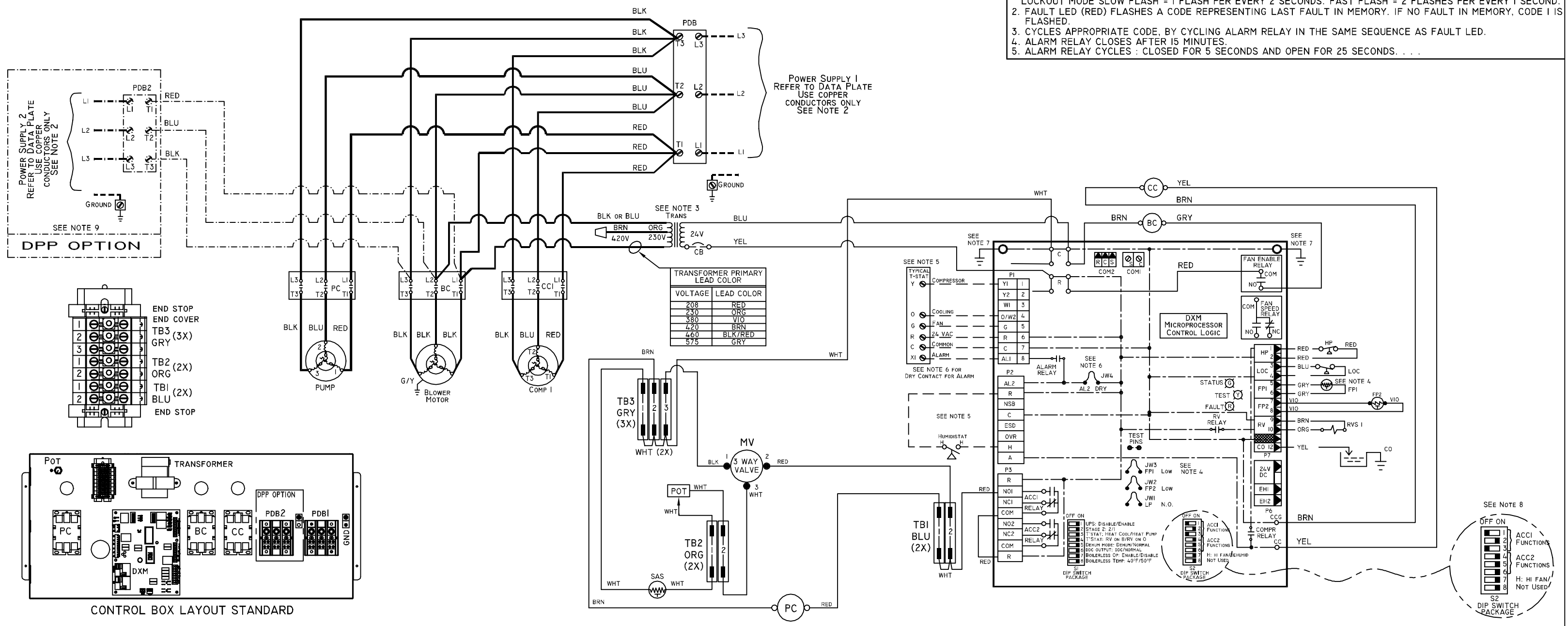
- AL ALARM RELAY CONTACTS
- BC BLOWER CONTACTOR
- CB CIRCUIT BREAKER
- CC COMPRESSOR CONTACTOR
- CR COOLING RELAY
- DPP DUAL POINT POWER
- ES END SWITCH
- FPI SENSOR, LOW TEMP PROTECTION WATER COIL
- FP2 SENSOR, LOW TEMP PROTECTION AIR COIL
- HPWS HIGH PRESSURE WATER SWITCH
- CO SENSOR CONDENSATE OVERFLOW
- HP HIGH PRESSURE SWITCH
- IP INTERNAL PUMP
- LOC LOSS OF CHARGE PRESSURE SWITCH
- LTS LOW TEMPERATURE SWITCH
- MV MOTORIZED VALVE
- PC PUMP CONTACTOR
- PDB POWER DISTRIBUTION BLOCK
- PDB2 POWER DISTRIBUTION BLOCK DUAL POINT OPTION
- POT POTENTIOMETER (SUPPLY AIR SETPOINT DEVICE)
- RVS REVERSING VALVE SOLENOID
- SAS SUPPLY AIR SENSOR
- TB TERMINAL BLOCK (Lo VOLTAGE)
- TRANS TRANSFORMER

- NOTES:**
1. COMPRESSOR AND BLOWER MOTOR THERMALLY PROTECTED INTERNALLY.
 2. ALL WIRING TO THE UNIT MUST COMPLY WITH NEC AND LOCAL CODES.
 3. 208/230V TRANSFORMERS WILL BE CONNECTED FOR 208V OPERATIONS, FOR 230V OPERATIONS, DISCONNECT RED LEAD AT LI, AND ATTACH ORANGE LEAD TO LI. CLOSE OPEN END OF RED LEAD WITH INSULATING TAPE. 380-420V TRANS WILL BE CONNECTED FOR 380V OPERATION. FOR 420V OPERATION, DISCONNECT VIO LEAD AT LI AND ATTACH BRN LEAD TO LI. INSULATE OPEN END OF VIO LEAD.
 4. FPI THERMISTOR PROVIDES LOW TEMP PROTECTION FOR WATER. WHEN USING ANTIFREEZE SOLUTIONS, CUT JW3 JUMPER.
 5. REFER TO HUMIDISTAT, OR TSTAT INSTALLATION, APPLICATION, AND OPERATION MANUAL FOR CONTROL WIRING TO THE UNIT. LOW VOLTAGE WIRING MUST BE "CLASS I" AND VOLTAGE RATED EQUAL OR GREATER THAN UNIT SUPPLY VOLTAGE.
 6. 24V ALARM SIGNAL SHOWN. FOR DRY ALARM CONTACT, CUT AL2 DRY (JW4) JUMPER AND DRY CONTACT WILL BE AVAILABLE BETWEEN AL1 AND AL2.
 7. TRANSFORMER SECONDARY GROUND VIA DXM BOARD STANDOFFS & SCREWS TO CONTROL BOX. (GROUND AVAILABLE FROM TOP TWO STANDOFFS AS SHOWN).
 8. DEHUMIDISTAT OPERATION (24 VAC AT H) DIP 2.1 OFF, DIP 2.2 ON, DIP 2.3 OFF.
 9. HUMIDISTAT OPERATION (0 VAC AT H) DIP 2.1 OFF, DIP 2.2 OFF, DIP 2.3 OFF.
 9. FOR DUAL POINT POWER, OPTION, (QTY. 3X) BLOWER WIRE WILL GO TO PDB@ ONLY.

DXM CONTROLLER FAULT CODES

OPERATION	STATUS LED (GREEN)	TEST LED (YELLOW)	FAULT LED (RED)	ALARM RELAY
NORMAL MODE	ON	OFF	NOTE:2	OPEN
DXM IS NON-FUNCTIONAL	OFF	OFF	OFF	OPEN
TEST MODE	-	ON	NOTE:2	CYCLE (NOTE 3)
NIGHT SETBACK	FLASHING CODE 2	-	NOTE:2	-
EMERGENCY SHUT DOWN	FLASHING CODE 3	-	NOTE:2	-
INVALID T-STAT INPUTS	FLASHING CODE 4	-	NOTE:2	-
NO FAULT IN MEMORY	ON	OFF	FLASHING CODE 1	OPEN
HP: FAULT / (LOCKOUT) NOTE: 1	SLOW FLASH/ (FAST FLASH)	OFF	FLASHING CODE 2	OPEN / (CLOSED)
LP: FAULT / (LOCKOUT) NOTE: 2	SLOW FLASH/ (FAST FLASH)	OFF	FLASHING CODE 3	OPEN / (CLOSED)
FPI: FAULT / (LOCKOUT) NOTE: 1	SLOW FLASH/ (FAST FLASH)	OFF	FLASHING CODE 4	OPEN / (CLOSED)
FP2: FAULT / (LOCKOUT) NOTE: 1	SLOW FLASH/ (FAST FLASH)	OFF	FLASHING CODE 5	OPEN / (CLOSED)
CO: FAULT / (LOCKOUT) NOTE: 1	SLOW FLASH/ (FAST FLASH)	OFF	FLASHING CODE 6	OPEN / (CLOSED)
OVER-UNDER VOLTAGE	SLOW FLASH	OFF	FLASHING CODE 7	OPEN(NOTE4)
NORMAL MODE w/UPS	ON	OFF	FLASHING CODE 8	CYCLE (NOTE5)
SWAPPED FPI/FP2 LOCKOUT	FAST FLASH	OFF	FLASHING CODE 9	CLOSED

1. STATUS LED (GREEN) : SLOW FLASH - CONTROLLER IN FAULT RETRY MODE, FAST FLASH - CONTROLLER IN LOCKOUT MODE SLOW FLASH = 1 FLASH PER EVERY 2 SECONDS. FAST FLASH = 2 FLASHES PER EVERY 1 SECOND.
2. FAULT LED (RED) FLASHES A CODE REPRESENTING LAST FAULT IN MEMORY. IF NO FAULT IN MEMORY, CODE 1 IS FLASHED.
3. CYCLES APPROPRIATE CODE, BY CYCLING ALARM RELAY IN THE SAME SEQUENCE AS FAULT LED.
4. ALARM RELAY CLOSSES AFTER 15 MINUTES.
5. ALARM RELAY CYCLES : CLOSED FOR 5 SECONDS AND OPEN FOR 25 SECONDS. . . .



SEE NOTE 3 TRANS

VOLTAGE	LEAD COLOR
208	RED
230	ORG
380	VIO
420	BRN
460	BLK/RED
575	GRY

